

1. **Annual Report**

a. Executive Summary

Mammoth Lakes Mosquito Abatement District (MLMAD) complied with the applicable components of the General NPDES Permit for Biological and Residual Pesticide Discharges from Vector Control Applications (General Permit). The MLMAD is a member of the Mosquito & Vector Control Association of California (MVCAC) NPDES Permit Coalition and the Coalition conducted all required chemical and physical monitoring. The results of the Coalition's monitoring will be included in the Coalition Annual Report that will be sent separately to the SWRCB and Regional Boards.

The MLMAD made 5 applications to waters of the U.S. during the 2012 calendar year. All of these applications were performed in May. The log of these applications can be found in Attachment B. In this first year of implementation, we planned our visual monitoring work based on historical patterns of frequency and emergence during the mosquito season, and to coincide with the concentration of the greatest number of sites that peak in late summer. Our plans sought to reduce loss of critical staff time for visual monitoring where long distance travel to emergence sites would be required and to minimize loss in our ability to prevent emergence at the greatest number of larval habitat sites. As a result of the determination by the SWRCB to suspend visual monitoring in July to ensure that we reached as many larval sites as possible to prevent WNV, no visual monitoring occurred in 2012. The MLMAD continued to follow the guidelines of its Pesticide Application Plan (PAP).

b. Summary of Monitoring Data

The MLMAD planned to perform visual monitoring requirements of the permit starting in August, as this is the traditional time of the year when our pesticide applications are at their highest. The SWRCB issued a letter to MVCAC dated July 13, 2012 that indicated the visual monitoring requirement would no longer be required of individual Districts.

Per the instructions in the letter, the Coalition will provide information on the incidence of West Nile Virus and other similar public health threats in the Coalition's annual report.

For the reasons stated above, the OVMAP will no longer be collecting visual monitoring data.

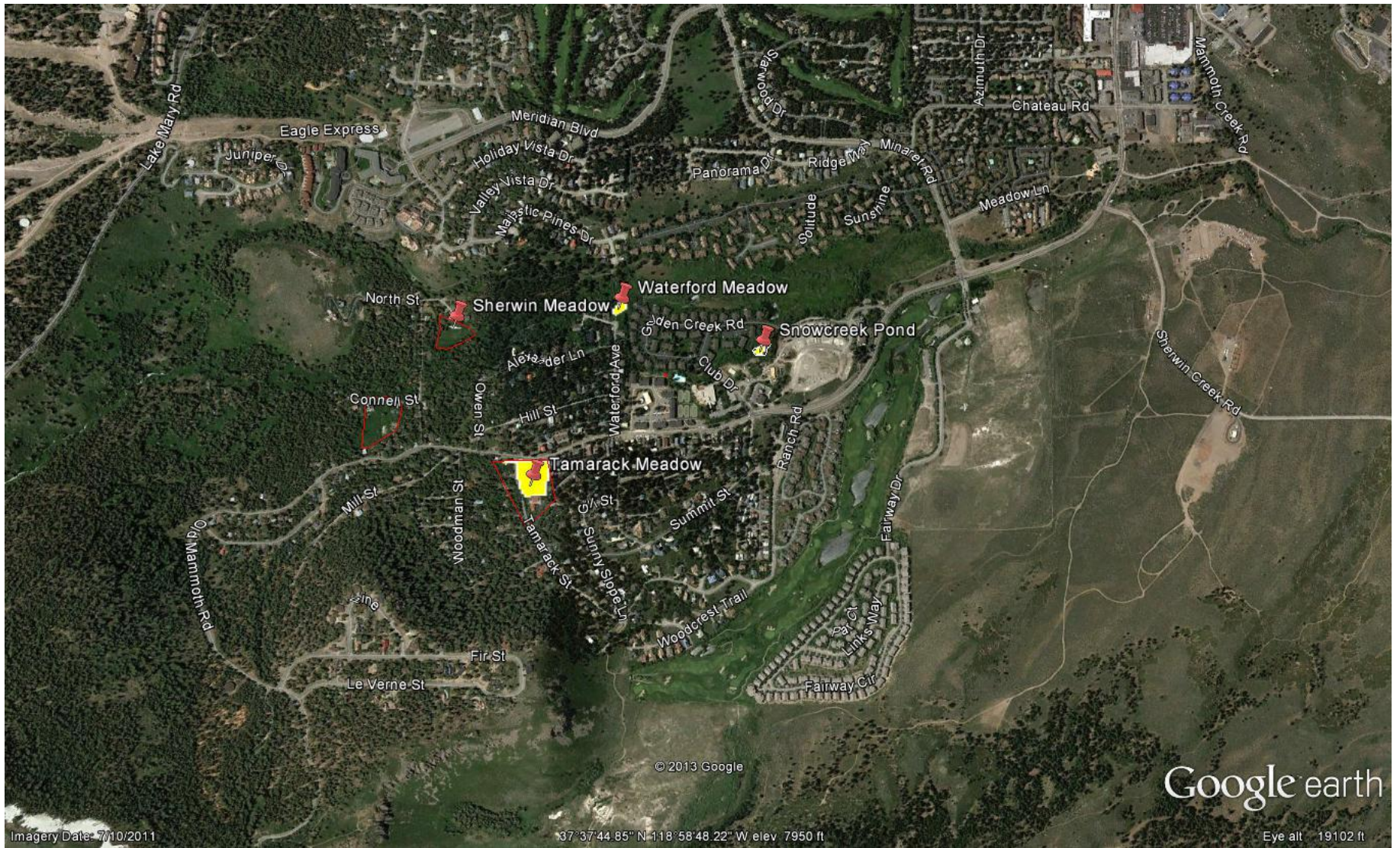
c. BMP Identification

BMP's utilized by the MLMAD are outlined in the MLMAD's PAP. These include; emphasis on reducing mosquito breeding habitat through non-chemical means, training employees to prevent spills and applying appropriate amount of chemical in each treatment area, calibrate application equipment and use a biology based assessment for determining treatment thresholds.

- d. Violation Discussion
No violations of the General Permit by the MLMAD were observed.
 - e. Map of Applications
See Attachment A
 - f. Log of Applications made to Waters of the U.S.
Attachment B includes monthly reports of all application data on the covered application areas.
 - g. General Information on Applications
Attachment B includes information on dosage, concentration and quantity of each pesticide used which are derived from the individual pesticide labels.
 - h. Visual Monitoring Data
Visual Monitoring Data has not been submitted to the State Water Board.
 - i. BMP, PAP, Monitoring Program Recommendations
No recommendations are being proposed to improve the current BMP's, PAP, or monitoring plan. Any changes to the Coalition Monitoring Plan will be highlighted in the Coalition Monitoring Annual Report.
 - j. Pesticide Application Log made to Waters of the U.S.
A representation of the pesticide application log is contained in Attachment B
2. Updated PAP Components
N/A
 3. Self Monitoring Reports
N/A
 4. Monitoring Reports
The Coalition Monitoring Annual Report will summarize all physical measurements and chemical monitoring done for 2011 and 2012.

Attachment A

Map of Applications, Mammoth Lakes Mosquito Abatement District



Attachment B

Mammoth Lakes Mosquito Abatement District NPDES Reporting 1/1/2012-12/31/2012

Employee
#1

Date	Time	Source	# Material	Amount Applied	Measuring Unit	Area Treated	Latitude	Longitude
5/1/2012	9:00 AM	Snowcreek Pond	Fourstar 180 Day Briquets	48	Lbs	5 Acres	37°37'51.67"N	118°58'41.23"W
5/2/2012	10:30 AM	Tamarack Meadow	Altosid XRG	22	Lbs	5 Acres	37°37'39.42"N	118°59'7.70"W
5/4/2012	9:00 AM	Snowcreek Pond	VectoBac G	20	Lbs	5 Acres	37°37'51.67"N	118°58'41.23"W
5/4/2012	1:00 PM	Waterford Meadow	Altosid XRG	.5	Lbs	16 Sq. ft.	37°37'55.54"N	118°58'57.58"W
5/18/2012	9:00 AM	Sherwin Meadow	VectoBac G	0.25	Lbs	3 Sq. Ft.	37°37'53.85"N	118°59'16.49"W