



Wastewater Change Petition Checklist

This checklist is for owners of wastewater treatment plants (purveyors) that intend to recycle some or all of their effluent. Purveyors should fill out the checklist prior to applying for State Water Resources Control Board (State Water Board), Division of Financial Assistance funding or requesting a recycled water permit from a regional water quality control board. Purveyors should submit the checklist to the State Water Board, Division of Water Rights.

This checklist is not intended to be a self-certification but will help identify and provide information to the State Water Board to determine if a wastewater change petition is needed pursuant to California Water Code section 1211.

California Water Code Section 1211

(a) Prior to making any change in the point of discharge, place of use, or purpose of use of treated wastewater, the owner of any wastewater treatment plant shall obtain approval of the board for that change. The board shall review the changes pursuant to the provisions of Chapter 10 (commencing with Section 1700) of Part 2 of Division 2.

(b) Subdivision (a) does not apply to changes in the discharge or use of treated wastewater that do not result in decreasing the flow in any portion of a watercourse.

After review by State Water Board, Division of Water Rights staff (staff), a wastewater change petition may be necessary and can be submitted to the State Water Resources Control Board for consideration. If staff determines a wastewater change petition is not needed, staff will provide written confirmation to the purveyor for inclusion in their Report of Waste Discharge or application for funding from the Division of Financial Assistance.

Please follow the instructions below and provide relevant justification and/or evidence in support of the purveyor’s request. Such information will be used by the Board to determine the need for a wastewater change petition. Copies of supporting evidence may be included as attachments to the checklist. In addition to this information, the Board may request additional or clarifying information to determine the need for a wastewater change petition. Please enter your facility identification details below:

Facility Information

Facility Name: Regulatory Measure ID*: Discharge Location:

Facility Address: Global ID*: Receiving Water Body:

Facility WDID*:

*For all fields marked with a *, please respond to at least one*

Instructions for Submittal

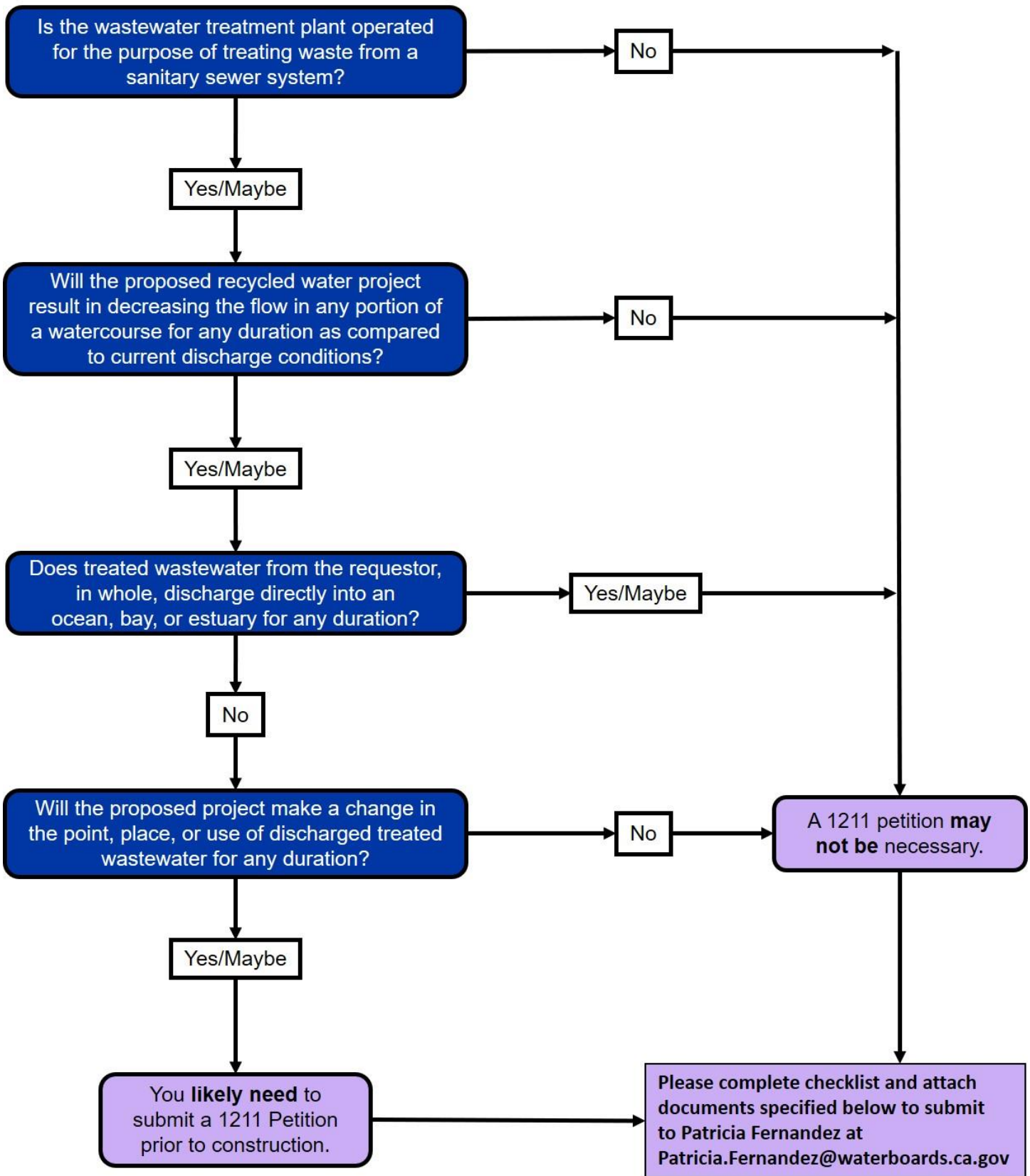
Please submit the completed checklist and any supporting documentation by email to Patricia Fernandez at patricia.fernandez@waterboards.ca.gov. In the email, please provide an attachment briefly describing the project and the proposed change to treated effluent, including the discharge location. If available, please attach average monthly discharged volume to the watercourse data for the facility for the last 5 years.

Board staff will review the explanations provided in support of the responses and either 1) confirm that Water Code section 1211 does not apply, or 2) follow up with the applicant regarding the need for a wastewater change petition.

If you have any questions regarding this form or the documentation necessary, please contact:

Patricia Fernandez
patricia.fernandez@waterboards.ca.gov
916-319-9141

1211 Petition Checklist Flowchart



1) Is the wastewater treatment plant operated for the purpose of treating waste from a sanitary sewer system?	Yes <i>Proceed to 2.</i>	No <i>Follow instructions on page 3 to submit checklist.</i>
--	--	--

Please provide justification, e.g., permit for the facility, 2-3 sentence description of the facility, etc.

2) Does treated wastewater from the requestor, in whole, discharge directly into an ocean, bay, or estuary?	Yes <i>Follow instructions on page 3 to submit checklist.</i>	No <i>Proceed to question 3.</i>
--	---	--

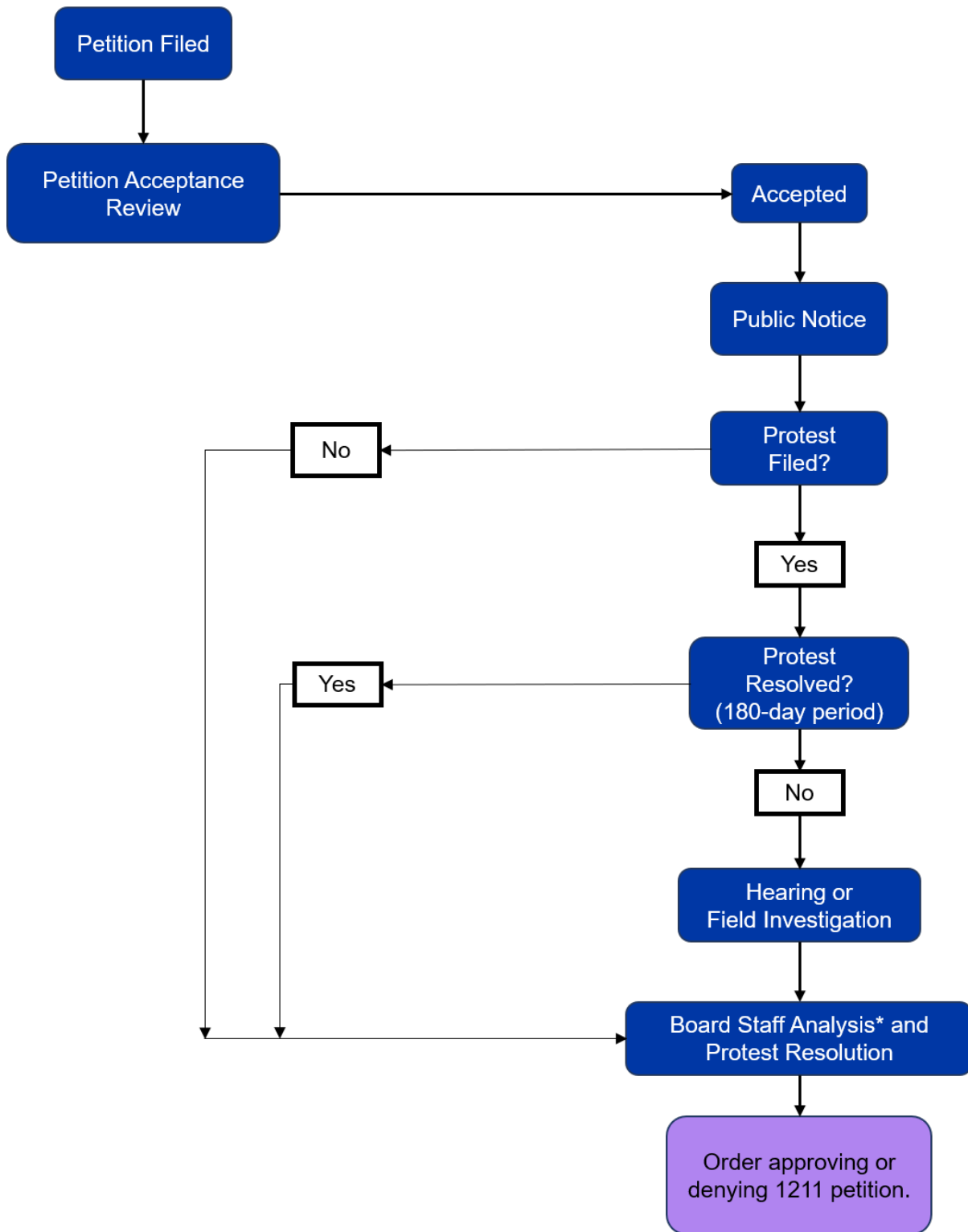
Please provide a brief description of the discharge type and location.

3) Will the proposed recycled water project result in decreasing the flow in any portion of a watercourse as compared to current discharge conditions? [Note that even if discharges indirectly contribute flow to a watercourse, changes to those discharges may be covered by Water Code section 1211]	Yes <i>Proceed to question 4.</i>	No <i>Follow instructions on page 3 to submit checklist.</i>
---	---	--

Please provide a description of how flow in a watercourse may or may not change from existing conditions due to the project. Many permittees with waste discharge requirements (WDRs) may provide discharge details from their WDRs as justification for this purpose. Please note that in some circumstances it may be shown that discharges to land indirectly contribute flow to a watercourse (e.g. if treated wastewater is discharged to a pond that is hydraulically connected to an adjacent river). In such a case as this, the wastewater treatment plant may need to evaluate the changes in flows contributing to the watercourse.

<p>4) a. Will the proposed recycled water project make a change in the point of discharge of treated wastewater?</p>	<p>Yes</p> <p><i>Proceed to question 4 b.</i></p>	<p>No</p> <p><i>Proceed to question 4 b.</i></p>
<p>4) b. Will the proposed recycled water project change where the treated wastewater is used?</p>	<p>Yes</p> <p><i>Proceed to question 4 c.</i></p>	<p>No</p> <p><i>Proceed to question 4 c.</i></p>
<p>4) c. Will the proposed recycled water project change the purpose of use? For example the addition of industrial or municipal use to a current use of irrigation or a new use where there was no previously existing use of the discharged water.</p>	<p>Yes</p> <p><i>Follow instructions below to submit checklist.</i></p>	<p>No</p> <p><i>Follow instructions below to submit checklist.</i></p>
<p><i>Please provide a brief description of the proposed changes applicable to parts a, b, or c of this question, or attach relevant information to this checklist.</i></p>		

1211 Petition Processing



*Board staff analysis occurs in parallel to protest resolution. Includes analysis of effect of change on fish, wildlife, or other instream beneficial uses as well as CEQA review, public trust review, and, if applicable, North Coast Instream Flow policy review.