

# California Stormwater Quality Association

## *Progressive Approach*

Recommendations on Using  
the Findings of the  
Blue Ribbon Panel Report

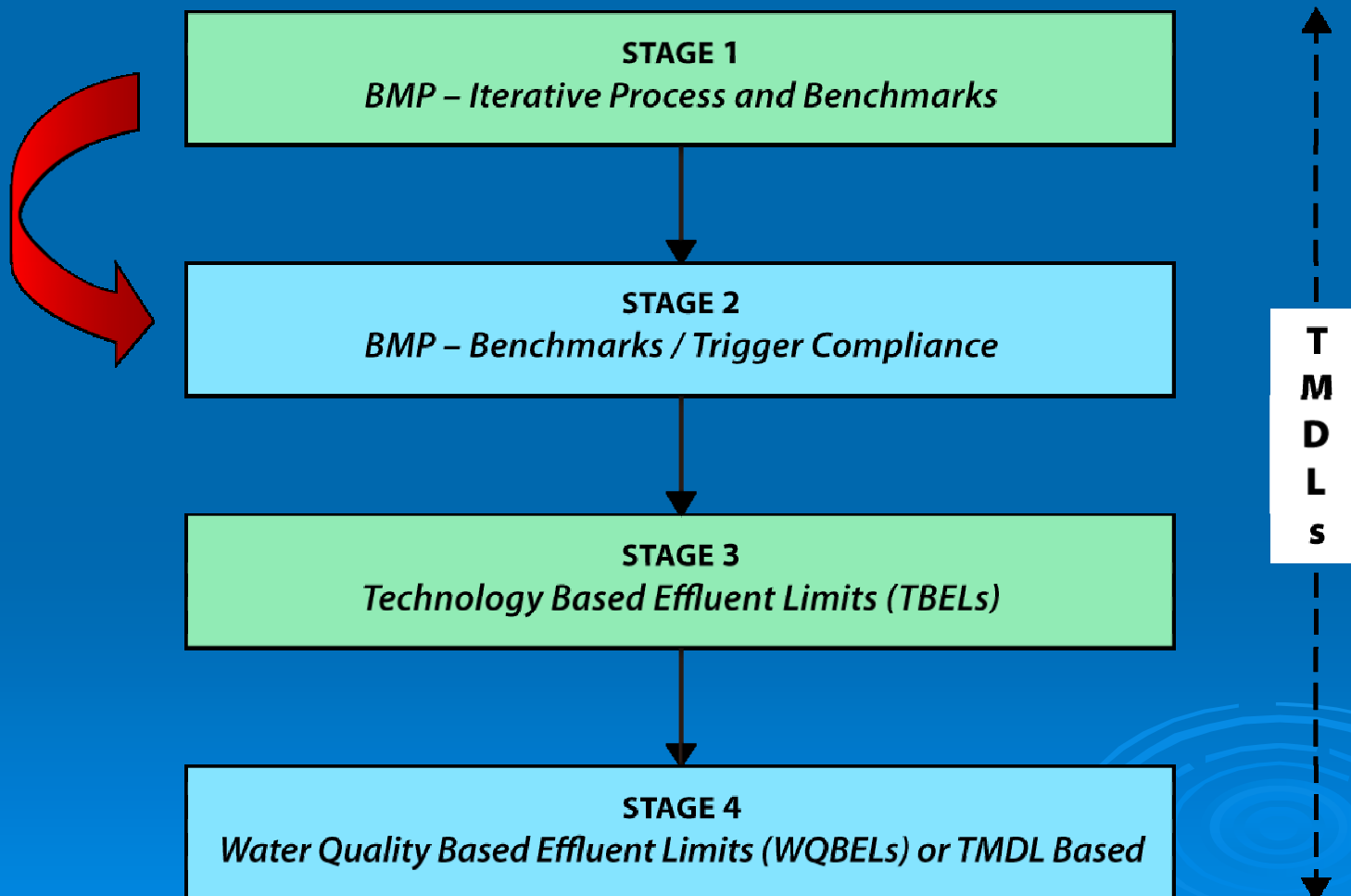


July 28, 2006

DRAFT

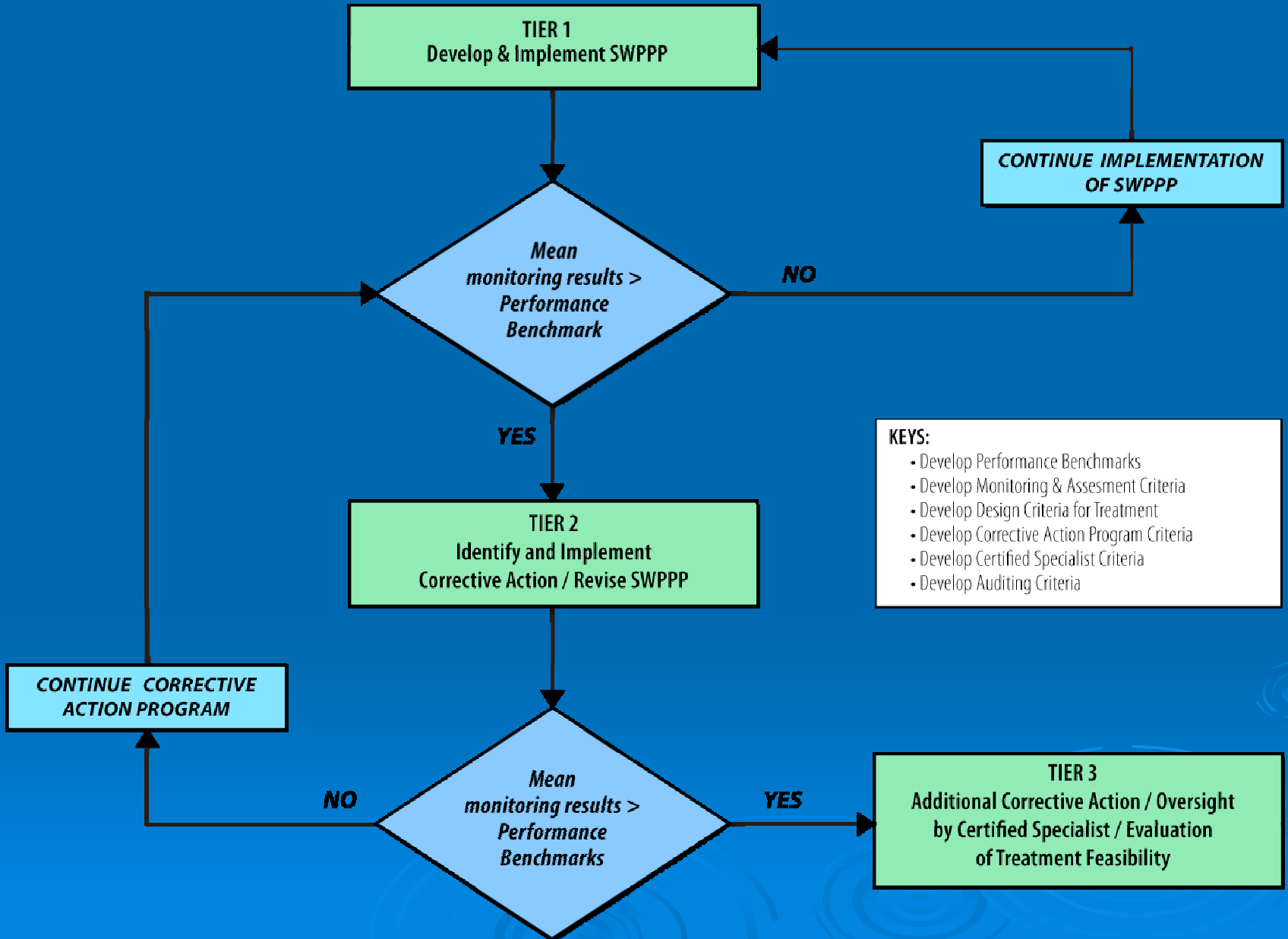
# CASQA Proposed *Progressive Approach* for Regulating Stormwater Applicable to All Three Permit Types

## REGULATORY STAGES



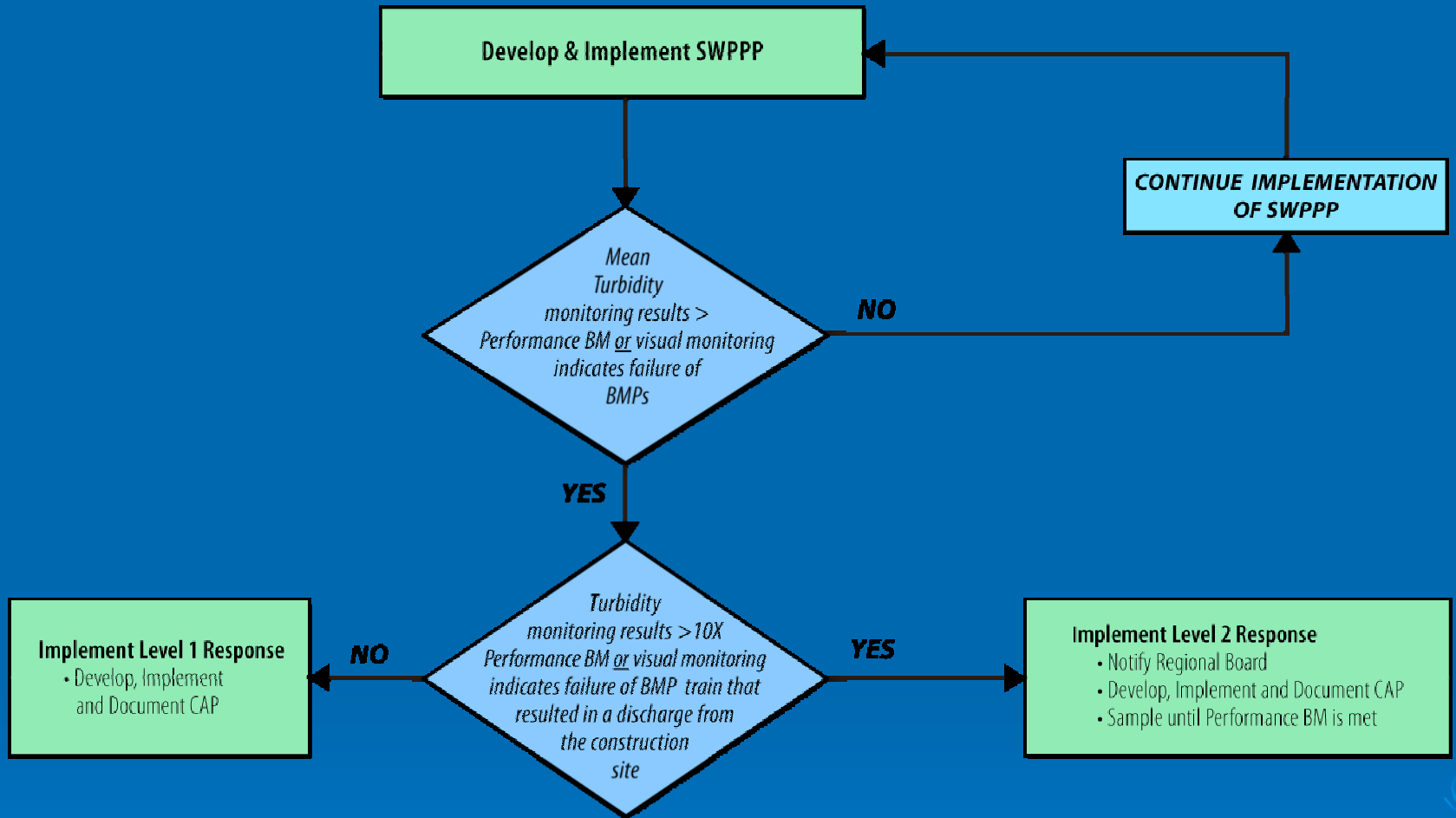
# Industrial Stormwater Permit Strategy: Stage 2 Roadmap

DRAFT



# Construction Stormwater Permit Strategy: Stage 2 Roadmap

DRAFT

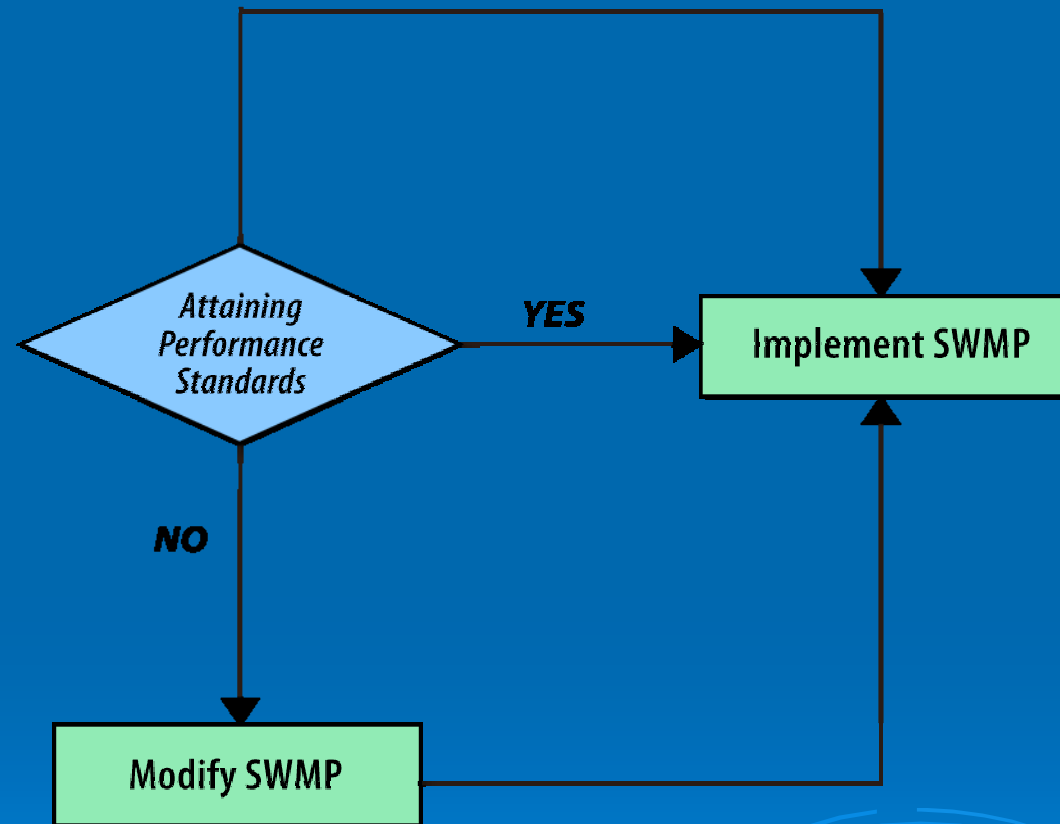
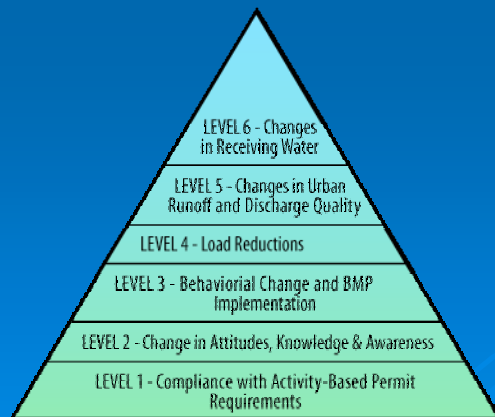


## KEYS:

- Develop Performance Benchmarks
- Develop Monitoring & Assessment Criteria
- Develop Certified Specialist Criteria
- Establish Rainy Season
- Develop Auditing Criteria
- Replace Current Monitoring with Universal Monitoring Proposal

**ANNUAL COMPLIANCE DETERMINATION BASED ON SELF OR INDEPENDENT AUDIT THAT WOULD BE INCORPORATED INTO THE ANNUAL COMPLIANCE CERTIFICATION**

## COMPLIANCE



DRAFT

# Municipal Stormwater Permit Strategy: Stage 2 Roadmap

## ASSESSMENT

