

Statewide Winery Order

San Diego Regional Water Quality
Control Board (Region 9)

Mahsa Izadmehr,
Ph.D.

September 12, 2024

Who Are We?



Fisayo Osibodu, P.E: Program Manger

Mahsa Izadmehr, Ph.D.: Program Staff, also works on POTWs, OWTS, small domestic systems, CAFOs, Conditional Waivers, and more.

Brandon Bushnell: Program Staff, primarily works on Recycled Water projects.

Why should you care?

Operating a winery or vineyard may require enrollment and/or compliance with these three regulatory mechanisms:

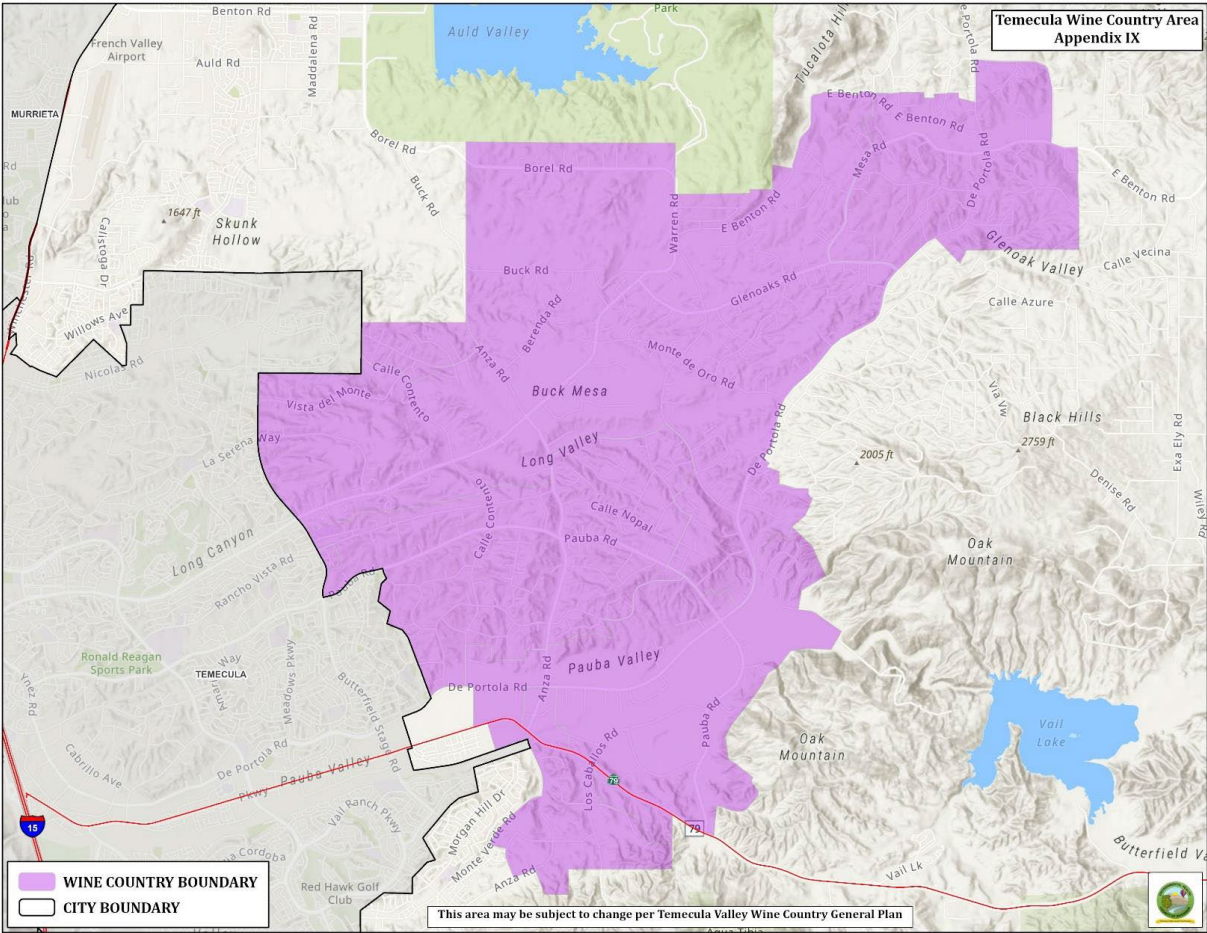
1. **Winery Order** (Statewide Order WQ 2021-0002-DWQ) **or Winery Waiver**; if disposing of winery process wastewater onsite (septic tank, irrigation, unlined pond, lined pond, etc.).
2. **Industrial Stormwater Permit** if making wine onsite.
3. **General Agriculture Permit** if growing grapes onsite.

1. Winery Order- San Diego Region- Temecula Valley

- FINDINGS- Applicability- Section 13
 - Large concentration in an area: Pose a threat to water quality.
 - No longer qualify for exempt status.
 - Required to submit an application for General Order coverage as a Tier 1 facility.

Tier	Facility Process WW Flow (gallons per year)
Exempt	< 10,000
Tier 1	10,000 – 30,000
Tier 2	30,001 – 300,000
Tier 3	300,001 – 1,000,000
Tier 4	1,000,001 – 15,000,000

Temecula Wine Country Area



1. Waiver of Waste Discharge Requirements

Order No. R9-2024-0001, *Conditional Waivers of Waste Discharge Requirements for Low Threat Discharges in the San Diego Region*, Waiver No. 3 - *Discharges of Winery Process Water to Lined Evaporation Ponds at **Small Wineries***.

- Applies to wineries with a vineyard, wine production facilities, & wine tasting rooms with process water flows of less than 10,000 gallons per year.
- Dischargers must comply with the general & specific conditions of this waiver.
- Discharges under the Winery Waiver are not expected to pose a threat to water quality.

1. Winery Waiver Requirements

- Submit complete NOI
- Non-winery wastewater must not be discharged into onsite evaporation ponds
- Minimize use of cleaning chemicals
- Use water-softening alternatives
- Separate large solids from winery process water
- Line evaporation ponds

2. Statewide Industrial Stormwater General Permit

- National Pollutant Discharge Elimination System (NPDES) General Permit for Storm Water Discharges Associated with Industrial Activities Order NPDES No. CAS000001.
- Industrial Stormwater General Permit;
https://www.waterboards.ca.gov/resources/fees/water_quality/
- For more information, please contact **Tony Felix** in our Stormwater Management Unit at (619) 521-5921 or tony.felix@waterboards.ca.gov.

3. General Agriculture Permit

- Commercial, irrigated agricultural operations
- Must meet at least one of the following criteria:
 - File IRS Schedule F form 1040 on federal taxes
 - Receive agriculture water rate from water purveyor
 - Pesticide handling certificate number

For more information, please contact

Cailynn Smith

Water Resource Control Engineer, EIT

Phone: (619) 521-3380

Email: Cailynn.Smith@waterboards.ca.gov

Abigail Pashina

Environmental Scientist

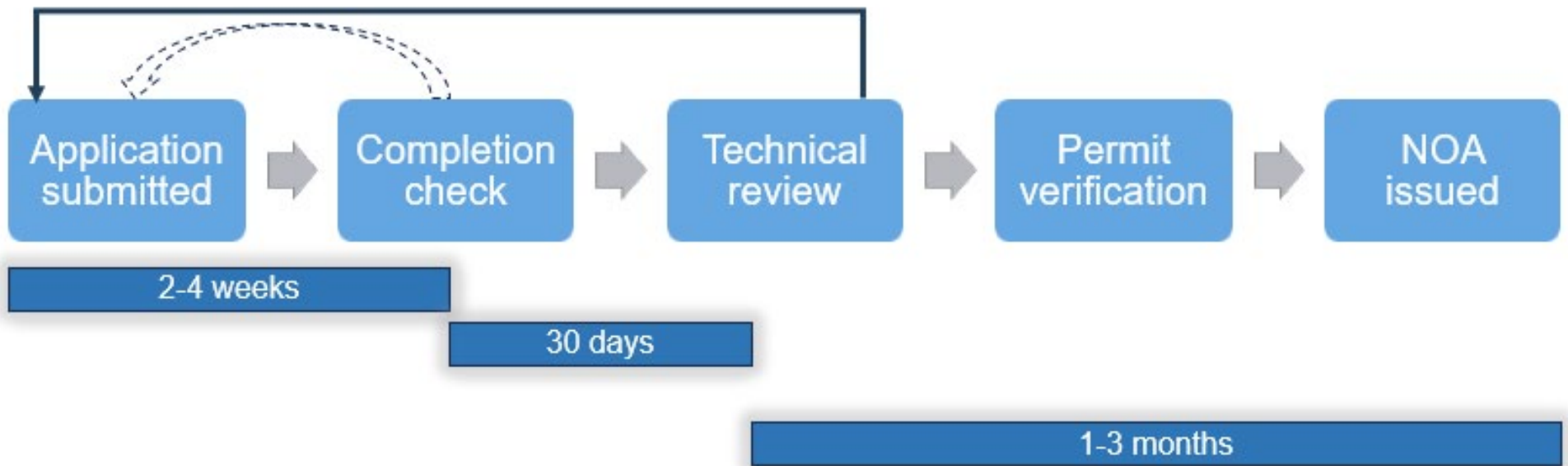
Phone: (619) 521-3379

Email: Abigail.Pashina@waterboards.ca.gov

Application Process Overview

- Eligibility Survey
 - Wineries to fill out survey to determine if eligible for enrollment
 - Survey found on the SWRCB webpage
- Submit application (eNOI) via CIWQS database
 - Help and Guidance documents available on the SWRCB webpage
- eNOI review

Application Process



San Diego Water Board Resources

Contact:

Mahsa.Izadmehr@Waterboards.ca.gov

Useful Weblinks:

San Diego Region – Waste Discharge Requirement Program

https://www.waterboards.ca.gov/sandiego/water_issues/programs/ground_water_basin/recycled_subsurface/

Conditional Waivers of Waste Discharge Requirements for Low Threat Discharges

https://www.waterboards.ca.gov/sandiego/water_issues/programs/waivers/

Statewide General Waste Discharge Requirements (WDRs) for Wineries

<https://www.waterboards.ca.gov/wineryorder>

Thank you! Contact Information

Mahsa Izadmehr

Mahsa.Izadmehr@Waterboards.ca.gov

Region 9

SanDiego@waterboards.ca.gov

State Board

DWQ-Winery@waterboards.ca.gov

Sign Up, Stay Informed! Statewide Winery Order

[Email Updates](#) < State Water Resources Control Board

< Water Quality < Statewide General Waste Discharge Requirements (WDRs) for Wineries

Links

Winery Order Webpage:

<https://www.waterboards.ca.gov/wineryorder>

Statewide Winery Order:

https://www.waterboards.ca.gov/water_issues/programs/waste_discharge_requirements/docs/wgo2021-0002-dwq.pdf

Region 9 Waste Discharge Requirements Program:

https://www.waterboards.ca.gov/sandiego/water_issues/programs/ground_water_basin/recycled_subsurface/

Conditional Waivers of Waste Discharge Requirements for Low Threat Discharges:

https://www.waterboards.ca.gov/sandiego/water_issues/programs/waivers/

Industrial Stormwater General Permit:

https://www.waterboards.ca.gov/resources/fees/water_quality/