

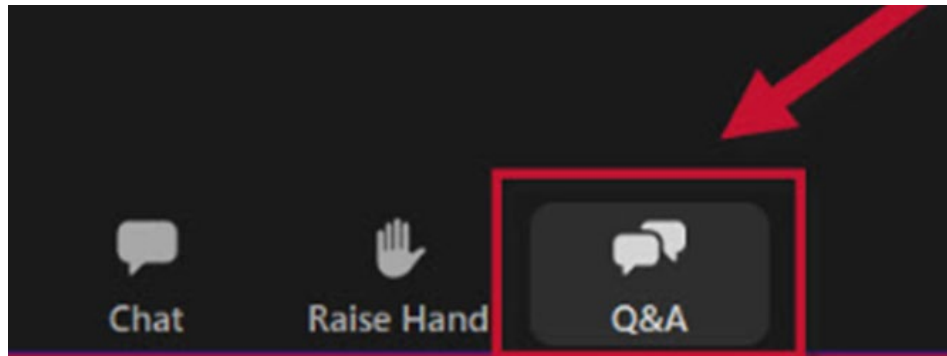
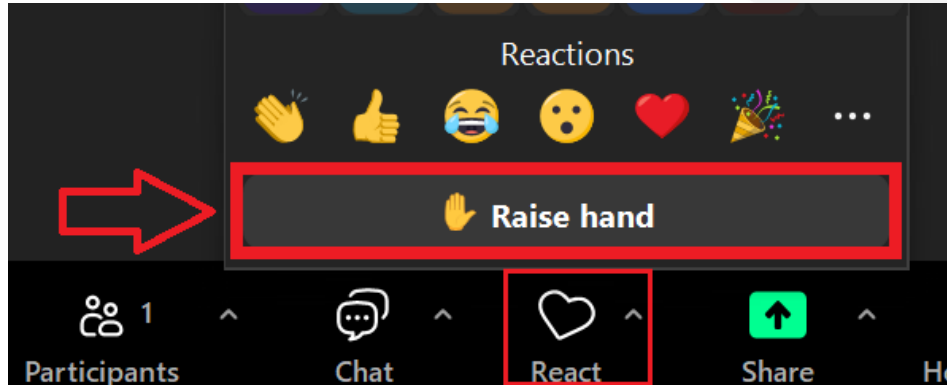
# Staff Workshop for the Draft 2026 California 303(d) List of Impaired Waters

Part of the Integrated Report  
February 11, 2025  
1:00 – 4:00 P.M.



Division of Water Quality

# Zoom Logistics



- This workshop is being recorded.
- Participants are muted automatically.
- Chat is disabled.
- Q&A box is active. You can submit questions, and we will respond after the presentation during the Q&A session.
- Example: "Region 1/North Coast [Your Question]"

# Agenda

Module	Time
Introduction, Logistics, Purpose of Today's Workshop	1:00 – 1:10
Integrated Report Overview	1:10 – 1:25
Overview of Process Improvements	1:25 – 1:35
Short Q&A Session	1:35 – 1:45
BREAK (15 Minutes)	1:45 – 2:00
Overview of Available Resources	2:00 – 2:10
Demo: Waterbody Factsheets (Short Q&A Session)	2:10 – 2:30
Demo: Data Visualization and Mapping Tool (Short Q&A Session)	2:30 – 2:50
BREAK (15 Minutes)	2:50 – 3:05
Q&A with State and Regional Board Staff	3:05 – 3:55
Closing	3:55 – 4:00

# Purpose of Today's Staff Workshop

- Purpose:
  - To help you prepare formal comments.
  - To answer clarifying questions.
  - To help you navigate available resources.
- The purpose does not include discussing or accepting formal comments.
- If you voice a statement or opinion today, we will suggest that you make a formal comment.

# Possible Board Member Participation

- One or more members of the State Water Board may be observing this workshop.
- Board member attendance would not represent a quorum as each would only be observing and not engaging in discussion.
- A State Board action or decision will **NOT** be taken today.

# Integrated Report Overview

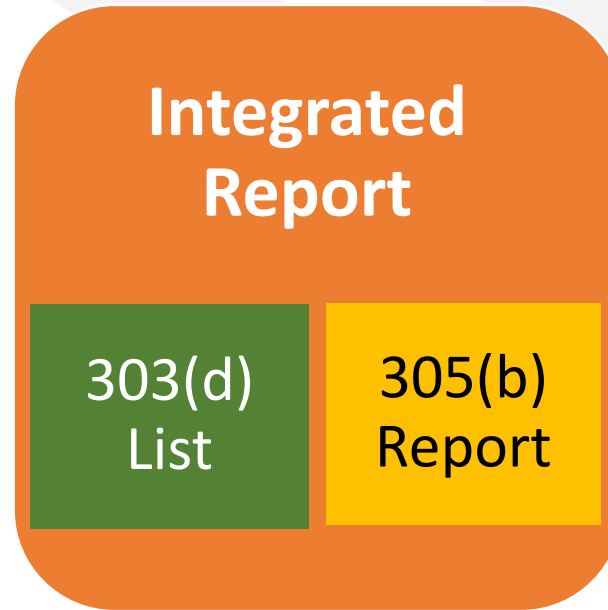
Documents and Map available at  
[https://www.waterboards.ca.gov/water\\_issues/programs/water\\_quality\\_assessment/](https://www.waterboards.ca.gov/water_issues/programs/water_quality_assessment/)



# The **Integrated Report** is prepared to meet Clean Water Act requirements.

## **303(d) List of Impaired Waterbodies**

- Waters where beneficial uses are not supported.
- TMDLs or other restoration programs are required for impaired waters.
- Requires approval by State Water Board **and** United States Environmental Protection Agency (USEPA).



## **305(b) Report**

- Reports on the overall water quality of surface waters.
- Does not require State Water Board or USEPA approval.

**Water Quality Control Policy for Developing California's Clean Water Act Section 303(d) List ("Listing Policy")**

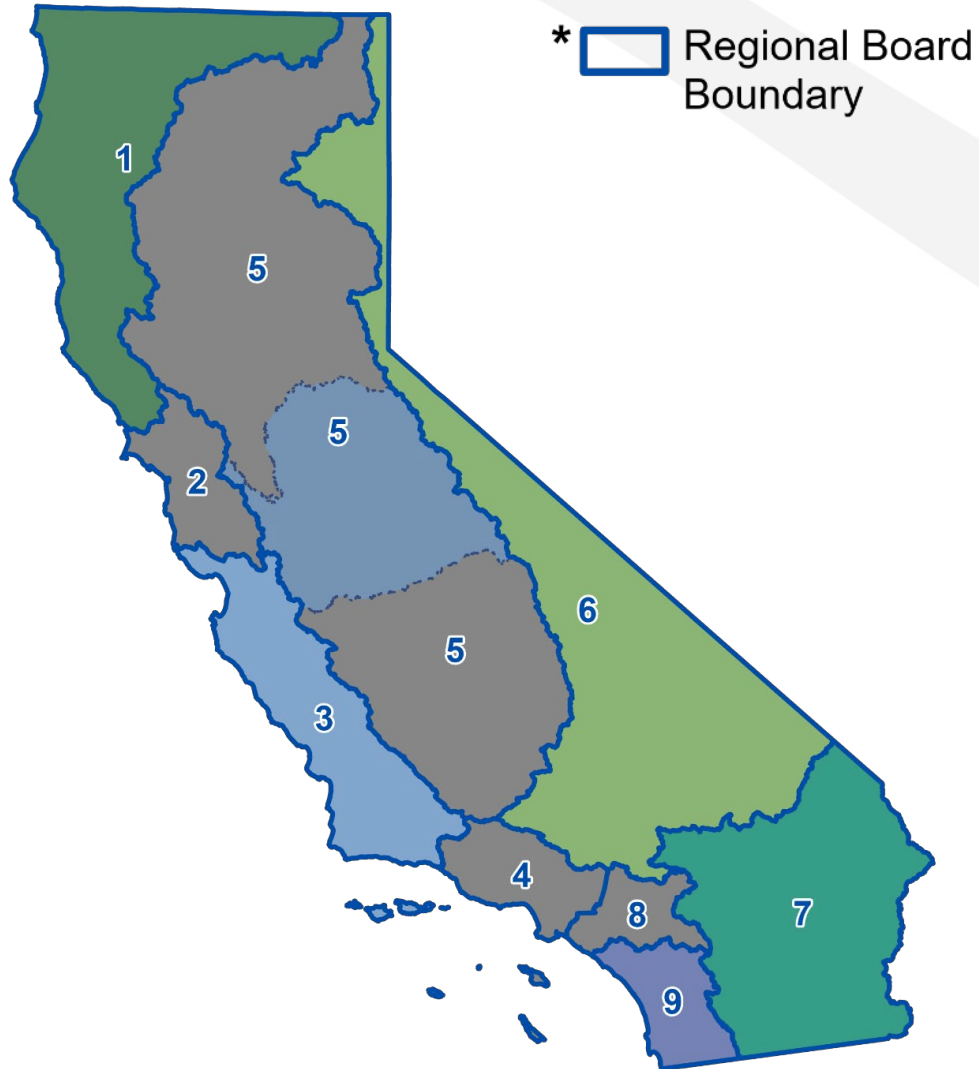
[https://www.waterboards.ca.gov/board\\_decisions/adopted\\_orders/resolutions/2015/020315\\_8\\_amendment\\_clean\\_version.pdf](https://www.waterboards.ca.gov/board_decisions/adopted_orders/resolutions/2015/020315_8_amendment_clean_version.pdf)

# Background: Condition Categories

1	At least <b>one</b> core beneficial use is <b>supported</b> and none are known to be impaired.
2	<b>Insufficient information</b> to determine beneficial use support.
3	There is insufficient data and/or information to make a beneficial use support determination but information and/or data indicates beneficial uses may be <b>potentially threatened</b> .
4	<p>At least one beneficial use is not supported but a <b>TMDL is not needed</b>.</p> <p><b>4a:</b> A TMDL has been developed and approved by USEPA, and the approved implementation plan is expected to result in full attainment of the water quality standard within a reasonable, specified time frame.</p> <p><b>4b:</b> Another regulatory program is reasonably expected to result in attainment of the water quality standard within a reasonable, specified time frame. Requires USEPA approval.</p> <p><b>4c:</b> The non-attainment of any applicable water quality standard for the waterbody segment is the result of pollution and is not caused by a pollutant.</p>
5	<p>At least one beneficial use is not supported and a <b>TMDL is needed</b>.</p> <p><b>5r:</b> An Advance Restoration Plan (ARP) has been developed that includes a near-term plan or description of actions, with a schedule and milestones, that is more immediately beneficial or practicable to achieving standards than a TMDL.</p>



# 2026 “On-Cycle” and “Off-Cycle” Regions



## On-Cycle Assessments

-  North Coast (1)
-  Lahontan (6)
-  Colorado River (7)

## Off-Cycle Assessments

-  Central Coast (3)
-  San Diego (9)
-  Central Valley (5)  
San Joaquin River sub-basin

## Not Assessed

-  - San Francisco (2)
-  - Los Angeles (4)
-  - Santa Ana (8)
-  - Central Valley (5)  
Sacramento and Tulare sub-basins

**Data Cut-Off Date: October 21, 2022**

# Summary Statistics: Draft 2026 Integrated Report

Region	2024 303(d) Listings	New Listings	New Delistings	2026 303(d) Listings*
<b>North Coast</b>	<b>217</b>	<b>77</b>	<b>13</b>	<b>317</b>
San Francisco Bay	476	0	0	476
<b>Central Coast</b>	<b>1,200</b>	<b>1</b>	<b>6</b>	<b>1,198</b>
Los Angeles	1,215	0	0	1,215
<b>Central Valley</b>	<b>1,246</b>	<b>149</b>	<b>75</b>	<b>1,227</b>
<b>Lahontan</b>	<b>256</b>	<b>151</b>	<b>35</b>	<b>353</b>
<b>Colorado River Basin</b>	<b>110</b>	<b>47</b>	<b>5</b>	<b>152</b>
Santa Ana	183	0	0	183
<b>San Diego</b>	<b>839</b>	<b>1</b>	<b>2</b>	<b>838</b>
<b>TOTALS</b>	<b>5,742</b>	<b>426</b>	<b>136</b>	<b>5,959</b>

*\*Count of 2026 303(d) listings may not equal the addition of new listings and removal of delistings from the 2024 303(d) List due to waterbody segment splits, merges, or other miscellaneous changes.*

# 2026 Integrated Report – Timeline



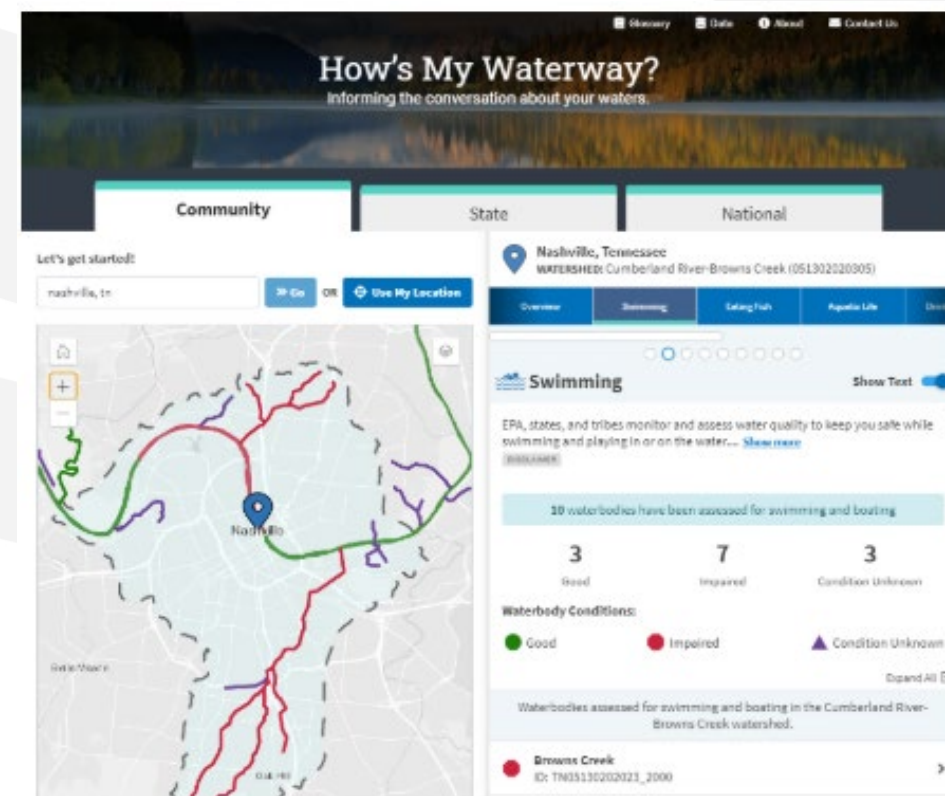
Documents and additional information available at: [https://www.waterboards.ca.gov/water\\_issues/programs/water\\_quality\\_assessment/](https://www.waterboards.ca.gov/water_issues/programs/water_quality_assessment/)

# How the 303(d) List Can Be Used

- **Informational:** Does not by itself directly establish new regulatory requirements.
- In a separate action, a listing and associated data *may* be used to:
  - Prioritize clean up efforts such as TMDLs and other restoration plans.
  - Trigger review of beneficial uses or objectives, leading to a standards change.
  - Inform permit development and requirements.
    - Evaluating whether effluent limitations are appropriate.
    - Monitoring requirements.
    - Source analysis study requirements.

# Other 303(d) List Uses

- U.S. EPA: How's My Waterway?
- Office of Environmental Health Hazard Assessment: CalEnviroScreen
- State Water Board's Racial Equity Action Plan



# Overview of Process Improvements



# Coordination with California Native American Tribes (“Tribes”)

- Not evaluated: Data collected by any entity on federally recognized tribal land.
- Evaluated: Data collected by Tribes outside of or bordering federally recognized tribal land.
- Tribal outreach and engagement – a separate effort from public review and comment process.

# Improved Communication and Data Transparency



[https://www.waterboards.ca.gov/water\\_issues/programs/water\\_quality\\_assessment/](https://www.waterboards.ca.gov/water_issues/programs/water_quality_assessment/)

Assessment Website

Integrated Report Fact Sheet

Data Evaluated Table

Water Quality Objectives Table

Visualization & Mapping Tool



# California's Prioritization Framework for Plans to Restore Impaired Waterbodies

Requested by USEPA

Describes Restoration Plans:

- Total Maximum Daily Load (TMDL)
- Category 4b Demonstration
- Advance Restoration Plans

Identifies Prioritization Factors:

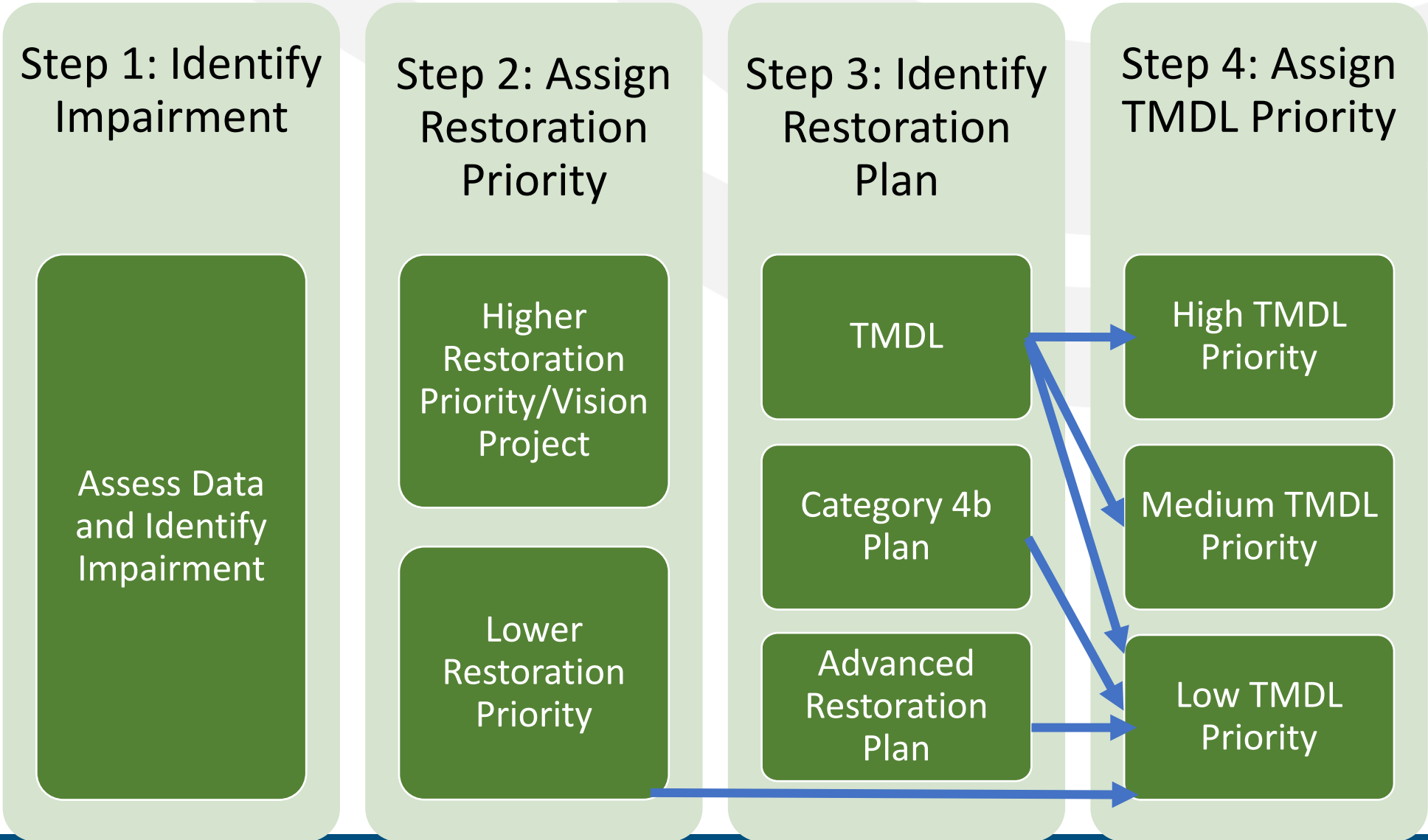
- Significance and Severity of Impairment
- Environmental Justice
- Climate Change
- Readiness and Potential for Success
- Resource Availability
- Public Interest and Commitment
- Regulatory and Policy Alignment

***Available for Public Review and Comment – See Appendix L of the Draft Staff Report***

# TMDL Priority Rankings

High Priority	TMDLs are planned for development within the next two years.
Medium Priority	TMDL are planned for development within two to ten years.
Low Priority	<ul style="list-style-type: none"><li>• TMDLs are planned for development in over ten years.</li><li>• Impairment <i>planned to</i> be addressed by a Category 4b Plan.</li><li>• Impairment addressed by an Advance Restoration Plan.</li><li>• Waterbody-pollutant combinations where evidence suggests applicable water quality standards may not appropriate.</li></ul>

# Prioritization Process



# Status of Prior Cycle Commitments

The following assessments were completed as part of the 2026 IR to fulfill commitments made during previous integrated report cycles:

- Corrected data entry discrepancies identified in the 2024 California Integrated Report.
- Completed Westside San Joaquin Coalition pesticide data reassessments.
- Completed chloride assessments for the Bay-Delta.
- Remapped waterbody boundaries in the Delta.
- Corrected the pyrethroids in sediment organic carbon normalization error.
- Associated data with quality assurance project plans (known as “QAPPs”).
- Completed all aluminum data reassessments using the 2018 USEPA Aquatic Life Criteria for Aluminum in Freshwater.

# Any questions so far?

Please use “Raise Hand” function under “React” (Go to “More” if you don’t see it on your control panel.)



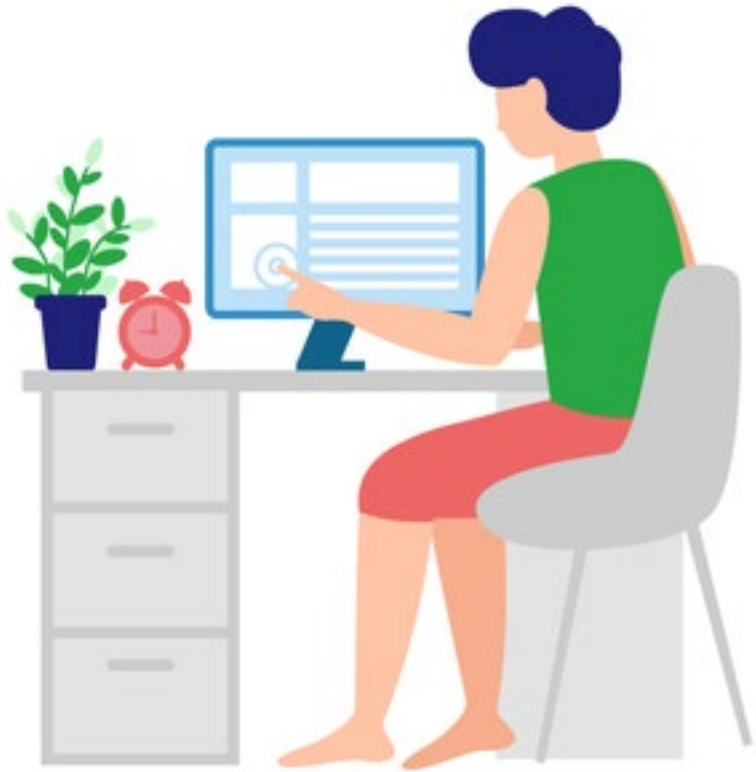


# 15 Minute Break

Please return at 2:00 PM.

Next: How to Navigate Available Resources

# How to Navigate Available Resources



# Available Resources

- Integrated Report Fact Sheet – Available in [English](#) and [Spanish](#)
- Tips to Providing Comments & Template Spreadsheets for Supplement Information
- 2026 California Integrated Report Draft Staff Report & Appendices
  - Appendix N: 2026 Data Evaluated Table
  - Appendix O: Water Quality Objectives Table
  - Appendix D: Integrated Report Visualization and Mapping Tool (demo)
  - Appendix B and B1: Waterbody Fact Sheets (demo)



# Fact Sheet: Available in English & Spanish

[https://www.waterboards.ca.gov/water\\_issues/programs/water\\_quality\\_assessment/](https://www.waterboards.ca.gov/water_issues/programs/water_quality_assessment/)

Home : Water Issues : Programs : Water Quality Assessment



## Surface Water Quality Assessment Program



The 2024 California Integrated Report Map is a visualization tool developed to graphically display waterbodies assessed in the Integrated Report. This map is updated after each Integrated Report is approved by the U.S. EPA. Please click on the map for more information and to download shapefiles.

### Welcome to the Surface Water Quality Assessment Program Webpage

The federal Clean Water Act ("CWA") requires that California report on the quality of its surface waterbodies (such as rivers, streams, reservoirs, estuaries, lagoons, bays, and ocean waters) every two years. In order to meet this requirement, California develops the Integrated Report. The Integrated Report consists of the Clean Water Act section 303(d) list of impaired waters and 305(b) condition report. To develop the Integrated Report, data from California surface waters are evaluated and, if appropriate, assessed to determine if they contain pollutants at levels that exceed water quality standards. Development of the Integrated Report is a collaborative process between the State Water Resources Control Board and Regional Water Quality Control Boards and input from the public.

Placing a waterbody on the 303(d) list initiates the prioritization of Total Maximum Daily Load ("TMDL") development, or another alternative restoration project, to restore and maintain water quality standards. The State Water Resources Control Board adopts the 303(d) list prior to submittal to the U.S. EPA for final approval.

The 305(b) condition report, commonly known as "305(b) report," assigns an overall water quality condition to all assessed waterbody segments. The 305(b) condition report does not require U.S. EPA approval. However, the U.S. EPA will compile 305(b) reports from states and transmit the summaries in their "National Water Quality Inventory Report" to the United States Congress.

California's Integrated Report is developed in "cycles" with submittal to the U.S. EPA every two years. Each listing cycle builds on assessments from the previous listing cycle; therefore, each time the Integrated Report is released, it contains all prior statewide assessments as well as any new or revised assessments based on the data received prior to the end of the data solicitation period.

Each Integrated Report cycle consists primarily of data assessments from waters within three Regional Water Quality Control Board regions that are identified in a Notice of Public Solicitation of Water Quality Data. The other six Regional Water Quality Control Boards may assess high priority data, make listing or delisting recommendations, or propose changes to the 305(b) condition report as an "off cycle" assessment. The State Water Resources Control Board and the Regional Water Quality Control Boards work in collaboration to develop the Integrated Report. For more information on data submittal for a Notice of Public Solicitation of Water Quality Data, please see Submitting Data and Information for the Integrated Report.

For more information on the Integrated Report, please refer to the Fact Sheet. Frequently Asked Questions (FAQ) coming soon!

### Current, In Progress, and Future Listing Cycles

The following table provides important information about each Integrated Report Cycle. The general timeframes provided are subject to change. For the most up to date information, please subscribe to the State Water Resources Control Boards Integrated Report 303(d)/305(b) email list. For more detailed information and official documentation for each cycle, please select the links for each cycle in the boxes below.

Subscribe directly to the Integrated Report 303(d)/305(b) Email List

### Contacts

For general questions about the Integrated Report, please contact us by email: [WQAssessment@waterboards.ca.gov](mailto:WQAssessment@waterboards.ca.gov)

Assessment Tools & Support Unit Lead:  
Lori Webber  
[Lori.Webber@waterboards.ca.gov](mailto:Lori.Webber@waterboards.ca.gov)

Assessment Policy & Process Unit Lead:  
Ana Maria Saenz  
[AnaMaria.Saenz@waterboards.ca.gov](mailto:AnaMaria.Saenz@waterboards.ca.gov)

Assessment Data Specialist:  
Jacob Kaplan  
[Jacob.Kaplan@waterboards.ca.gov](mailto:Jacob.Kaplan@waterboards.ca.gov)

State Water Resources Control Board Ombudsperson:  
[opp\\_contacts@waterboards.ca.gov](mailto:opp_contacts@waterboards.ca.gov)

### Data Solicitation

- California Environmental Data Exchange Network (CEDEN)
- Integrated Report Upload Portal
- Submitting Data and Information for the Integrated Report

### Resources

- Fact Sheet/Hoja Informativa
- FAQs **Coming Soon!**
- Listing Policy
- Impaired Waters Policy
- Historical Integrated Reports
- Total Maximum Daily Load (TMDL) Program
- Water Quality Goals
- Surface Water Ambient Monitoring Program (SWAMP)
- U.S. EPA's How's My Waterway
- CA OEHHA's CalEnviroScreen
- Integrated Report Water Quality Objectives, Criteria, and Evaluation Guidelines

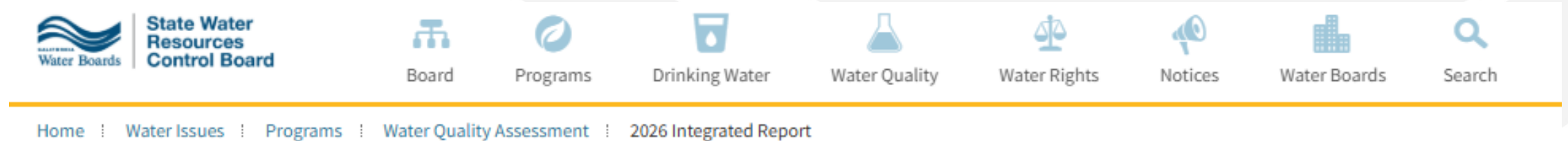
## Resources

- Fact Sheet/Hoja Informativa
- FAQs **Coming Soon!**
- Listing Policy
- Impaired Waters Policy
- Historical Integrated Reports
- Total Maximum Daily Load (TMDL) Program
- Water Quality Goals
- Surface Water Ambient Monitoring Program (SWAMP)
- U.S. EPA's How's My Waterway
- CA OEHHA's CalEnviroScreen
- Integrated Report Water Quality Objectives, Criteria, and Evaluation Guidelines

Cycle	Regions	Milestone
2024 (Current Integrated Report)	<p>On-Cycle Regions:</p> <ul style="list-style-type: none"> <li>San Francisco Bay</li> <li>Los Angeles</li> <li>Santa Ana</li> </ul> <p>Off-Cycle Regions:</p> <ul style="list-style-type: none"> <li>Central Coast</li> <li>Sacramento River watershed of the Central Valley Region</li> <li>San Diego</li> </ul>	<p>Data Solicitation Period : June 29, 2020 – October 16, 2020</p> <p>Public Review Comment Period: February 16-April 3, 2023</p> <p>State Board Approval: February 6, 2024</p> <p>U.S. EPA Partial Approval and Partial Disapproval: December 13, 2024</p> <ul style="list-style-type: none"> <li>U.S. EPA approved the majority of the 303(d) list but identified 53 waterbody-pollutant combinations they are considering adding to the 303(d) list. See U.S. EPA's partial approval and partial disapproval letter for details: <a href="#">Partial Approval and Partial Disapproval of California's 2024 List of Impaired Waters.</a></li> </ul>
2026 (In Progress)	<p>On-Cycle Regions:</p> <ul style="list-style-type: none"> <li>North Coast</li> <li>Lahontan</li> <li>Colorado River Basin</li> </ul> <p>Off-Cycle Regions:</p> <ul style="list-style-type: none"> <li>San Joaquin River watershed of the Central Valley Region</li> <li>Central Coast</li> <li>San Diego</li> </ul>	<p>Data Solicitation Period : April 18, 2022 – October 21, 2022</p> <p>Data Evaluation and Assessment: Winter 2022-Winter 2024</p> <p>Public Review and Comment Period: January 30 – April 2, 2025</p> <p>Notice of Staff Hosted Public Workshop, Public Hearing and Opportunity for Public Comment for the Draft 2026 California Clean Water Act Section 303(d) List</p> <ul style="list-style-type: none"> <li>Staff Hosted Public Workshop: February 11, 2025</li> <li>Public Board Hearing: March 18, 2025</li> </ul> <p>State Board Consideration: Winter 2025/2026</p> <p>Submission to U.S. EPA: Spring 2026</p>
2028 (In Progress)	<p>On-Cycle Regions:</p> <ul style="list-style-type: none"> <li>Central Coast</li> <li>Central Valley <ul style="list-style-type: none"> <li>Sacramento – San Joaquin River Delta</li> <li>Tulare Lake Basin</li> </ul> </li> <li>San Diego</li> </ul>	<p>Data Solicitation Period: April 18, 2024 – October 23, 2024</p> <p>Data Evaluation and Assessment: Winter 2024 – Fall 2026</p> <p>Public Review and Comment Period: Spring 2027</p> <p>State Board Consideration: Winter 2027/2028</p> <p>Submission to U.S. EPA: Spring 2028</p>

# Tips for Providing Comments

[https://www.waterboards.ca.gov/water\\_issues/programs/water\\_quality\\_assessment/2026\\_integrated\\_report.html](https://www.waterboards.ca.gov/water_issues/programs/water_quality_assessment/2026_integrated_report.html)



## 2026 California Integrated Report

For the 2026 California Integrated Report, data from waterbodies in the North Coast, Lahontan, and Colorado River Basin Regional Quality Water Boards will be assessed as “on-cycle” assessments. Data from waterbodies within the San Joaquin River sub-area in the Central Valley Regional Water Board will be assessed as “off-cycle” assessments. San Joaquin River sub-area is defined as the San Joaquin River watershed and includes the mainstem of the San Joaquin River upstream the legal boundary of the Sacramento-San Joaquin Delta and all surface waters tributary to the mainstem. Additionally, data and information from several waterbodies within the Central Coast and San Diego Regional Water Boards are considered as “off cycle” assessments.

**New! Tips for submitting comments on the draft 303(d) List for the 2026 California Integrated Report and supporting draft staff report.** Optional guidance documents are now available to provide tips on submitting comments and templates for supporting data and information on the draft 2026 California Integrated Report. These documents are optional and are not required to submit comments:

- [Tips for Submitting Comments](#)
- [Template Comment Letter Appendix - Supporting Data and Information \(Excel Version\)](#)
- [Template Comment Letter Appendix - Supporting Data and Information \(Word\)](#)



## Template Submitting Integrated Report Comments Supporting Data and Information (Excel Version)

### Purpose and Field Descriptions

The purpose of this appendix is to organize specific information related to your comment letter on the draft 2026 California Integrated Report and supporting draft staff report. This appendix is suggested guidance for providing data references and optional to use. This appendix is also available in an excel version found on the 2026 California Integrated Report webpage.

The fields highlighted in green with bold text in Table 1 are suggested for inclusion in this appendix. The remaining fields will help State Water Board staff be more precise when reviewing your comment; however, none of the fields are required and fields may be removed to tailor the information you provide to support your comment letter. Table 2 is provided as an example of potential fields that a commenter may incorporate. The fields correlate with the fields in the waterbody factsheets found on the 2026 California Integrated Report webpage. For more information on submitting public comments and contact information for questions, please refer to the Tips for Submitting Comments document found on the 2026 California Integrated Report webpage.

[2026 California Integrated Report webpage link](#)

**Optional to use** but will be helpful for us to follow and understand your comments if you are providing supplemental information such as Decision IDs, LOE IDs, waterbody information, etc.

Field Name	Field Description
<b>Comment/Topic</b>	The unique comment identifier (e.g., number or letter) from your comment letter.
<b>Waterbody Name</b>	The name of the waterbody segment.
<b>Pollutant</b>	The pollutant assessed in the waterbody-pollutant decision.
<b>Decision ID</b>	The unique identification number for each assessment decision. Decisions are made at the waterbody-pollutant combination level.
Request	The action requested to revise or clarify for water quality assessments. Keep this brief (i.e., duplicate data, incorrect station
Waterbody ID	The unique identification number for the waterbody segment.
LOE ID	Unique identification number for each Line of Evidence ("LOE"). Each LOE is a unique combination of a waterbody, pollutant, beneficial use, water quality objective, evaluation guideline, matrix, and fraction.
Beneficial Use	The beneficial use evaluated in the LOE.
Matrix	Indicates the sample medium (e.g., water, tissue, sediment), when available, may also indicate not recorded, unknown or not
Number of Samples	The sample count included in the LOE.
Number of Exceedances	The number of samples that exceed the numeric threshold (water quality objective or evaluation guideline).
Spatial Representation	A description of the spatial representation of the data or information in the LOE, such as the number and location of sampling
Temporal Representation	A description of the time frame represented by the data or information in the LOE, such as the dates of sample collection.
TMDL or Alternative Project Name	The name of total maximum daily load ("TMDL") or alternative project developed to address the pollutant impairment, if possible.
Other	Field for other data references, if needed add or remove other fields.
Notes	Comments and clarifications about the information provided.

## Notices and Draft Staff Report

- Notice of Staff Hosted Public Workshop, Public Hearing and Opportunity for Public Comment for the Draft 2026 California Clean Water Act Section 303(d) List
- Draft Staff Report for the 2026 California Integrated Report: Surface Water Quality Assessments to comply with Clean Water Act 303(d) List and 305(b) Report
  - Appendix A: 2026 303(d) List of Impaired Waters
  - Appendix B: Statewide Waterbody Fact Sheets
    - Appendix B1: Statewide Waterbody Fact Sheets – Excel Version
  - Appendix C: State Water Board's Integrated Report Condition Category Reports
    - Appendix C1: Category 1 Waterbody Segments
    - Appendix C2: Category 2 Waterbody Segments
    - Appendix C3: Category 3 Waterbody Segments
    - Appendix C4a: Category 4a Waterbody Segments
    - Appendix C4b: Category 4b Waterbody Segments
    - Appendix C4c: Category 4c Waterbody Segments
    - Appendix C5: Category 5 Waterbody Segments
  - Appendix D: Map and Visualization Tool for the 2026 California Integrated Report
  - Appendix E: TMDLs Adopted by Regional Water Boards since January 2009
  - Appendix F: Generalized Flow Chart for Fish Tissue Mercury Assessments for the California Integrated Report
  - Appendix G: Miscellaneous Mapping Changes Report
  - Appendix H: Reference Reports
    - Appendix H1: Region 1 Reference Report
    - Appendix H2: Region 2 Reference Report
    - Appendix H3: Region 3 Reference Report
    - Appendix H4: Region 4 Reference Report
    - Appendix H5: Region 5 Reference Report
    - Appendix H6: Region 6 Reference Report
    - Appendix H7: Region 7 Reference Report
    - Appendix H8: Region 8 Reference Report
    - Appendix H9: Region 9 Reference Report
    - Appendix H10: Statewide Reference Report
  - Appendix I: 2026 303(d) List of New Waterbody-pollutant Combination Listing and Delistings
  - Appendix J: List of Retired Lines of Evidence
  - Appendix K: List of Summing Pollutants
  - Appendix L: California's Prioritization Framework for Plans to Restore Impaired Waterbodies
  - Appendix M: List of Constructed Waters in the Central Valley Region
  - Appendix N: 2026 California Integrated Report Data Evaluated
  - Appendix O: 2026 California Integrated Report Water Quality Objectives, Criteria, and Evaluation Guidelines
- 2026 Data Solicitation Notice

- Appendix N: 2026 California Integrated Report Data Evaluated
- Appendix O: 2026 California Integrated Report Water Quality Objectives, Criteria, and Evaluation Guidelines

# Appendix N: 2026 Data Evaluated Table

- Available as Appendix N: 2026 California Integrated Report Data Evaluated.
- Table of parent projects with data that were considered for the 2026 IR.
- The table contains:
  - Parent Project Names
  - Whether the data were assessed (Yes/No)
  - Reasoning that briefly explains why or why not the data were assessed.

# Appendix O: Water Quality Objectives Table

Available as Appendix O: 2026 California Integrated Report Water Quality Objectives, Criteria, and Evaluation Guidelines

- Identifies state and regional water quality criteria, objectives and evaluation guidelines used for assessments of **chemical concentrations in water, sediment, and tissue** for the 2026 California Integrated Report
- Does **NOT** include objectives, criteria, and/or evaluation guidelines used for bacteria, bioassessment, aquatic toxicity, or site-specific objectives for chemical concentration data.

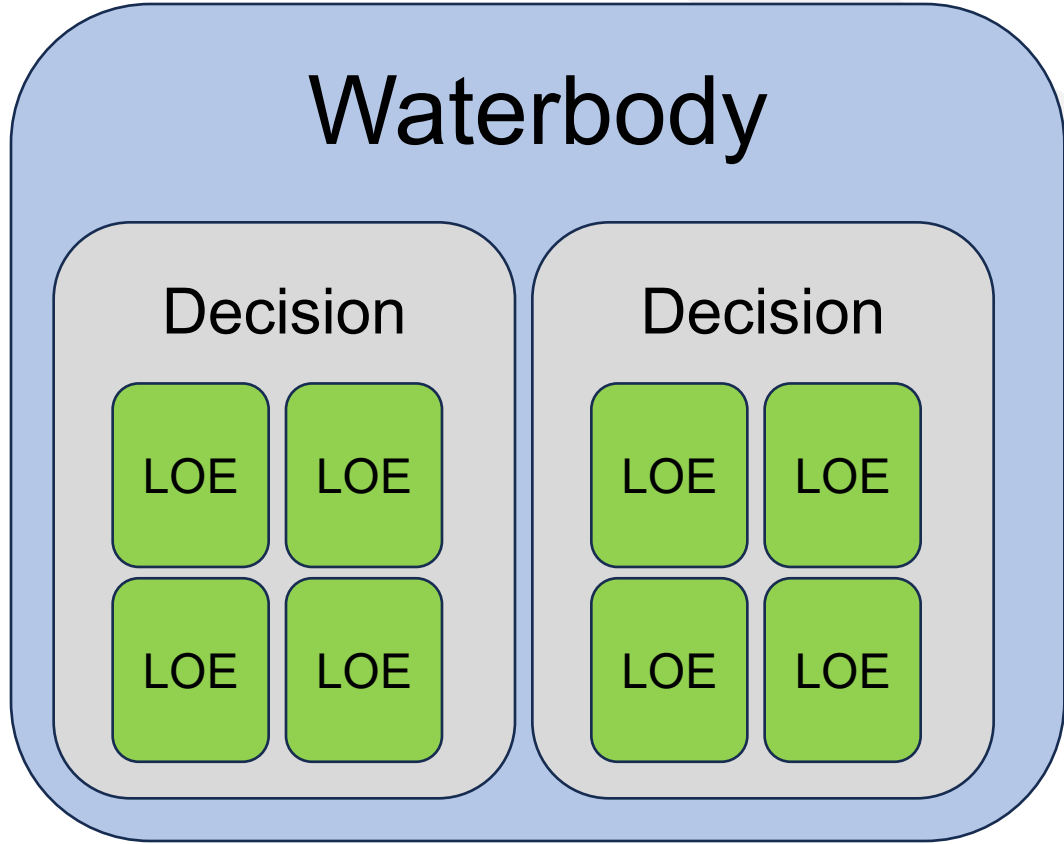
# Demo: Waterbody Fact Sheets

DECISION ID Owens River (Upper)	161627	Region 6
<b>Pollutant:</b> <b>Final Listing Decision:</b> <b>Last Listing Cycle's Final Listing Decision:</b> <b>Revision Status:</b> <b>Sources:</b> <b>TMDL Priority:</b> <b>Impairment from Pollutant or Pollution:</b>	<b>Sodium</b> <b>Do Not Delist from 303(d) list (TMDL required list)</b> List on 303(d) list (TMDL required list)(2018) Revised A Source Unknown Low Pollutant	
<b>Regional Board Conclusion:</b>	<p>This pollutant is being considered for removal from the CWA section 303(d) List under section 4.2 of the Listing Policy. Under this section a single line of evidence is necessary to assess listing status.</p> <p>Eight lines of evidence are available in the administrative record to assess this pollutant. Two of the 21 samples exceed the objective for the water quality objective for the AG beneficial use, and 21 of 21 samples exceed the water quality objective for the MUN beneficial use.</p> <p>Based on the readily available data and information, the weight of evidence indicates that there is sufficient justification against removing this water segment-pollutant combination from the CWA section 303(d) List.</p> <p>This conclusion is based on the staff findings that:</p> <ol style="list-style-type: none"> <li>1. The data used satisfies the data quality requirements of section 6.1.4 of the Policy.</li> <li>2. The data used satisfies the data quantity requirements of section 6.1.5 of the Policy.</li> <li>3. Two of the 21 samples exceed the objective for the water quality objective for the AG beneficial use, and 21 of 21 samples exceed the water quality objective for the MUN beneficial use, and this exceeds the allowable frequency listed in Table 4.2 of the Listing Policy.</li> <li>4. Pursuant to section 4.11 of the Listing Policy, no additional data and information are available indicating that standards are met.</li> </ol>	
<b>Regional Board Decision Recommendation:</b>	After review of the available data and information, RWQCB staff concludes that the water body-pollutant combination should not be removed from the section 303(d) list because applicable water quality standards for the pollutant are being exceeded.	
<b>State Board Review of Regional Board Conclusion and Recommendation:</b>		
<b>State Board Decision Recommendation:</b>		

[waterboards.ca.gov/water\\_issues/programs/tmdl/2025\\_2026state\\_ir\\_reports/apx-b-factsheets/table\\_of\\_contents.shtml](http://waterboards.ca.gov/water_issues/programs/tmdl/2025_2026state_ir_reports/apx-b-factsheets/table_of_contents.shtml)



# Waterbody Fact Sheet Structure



**Waterbody Level**

- Lake
- Stream
- Coastal Beach

**IR Condition Categories & Waterbody Fact Sheet**

**Pollutant Decision Level**

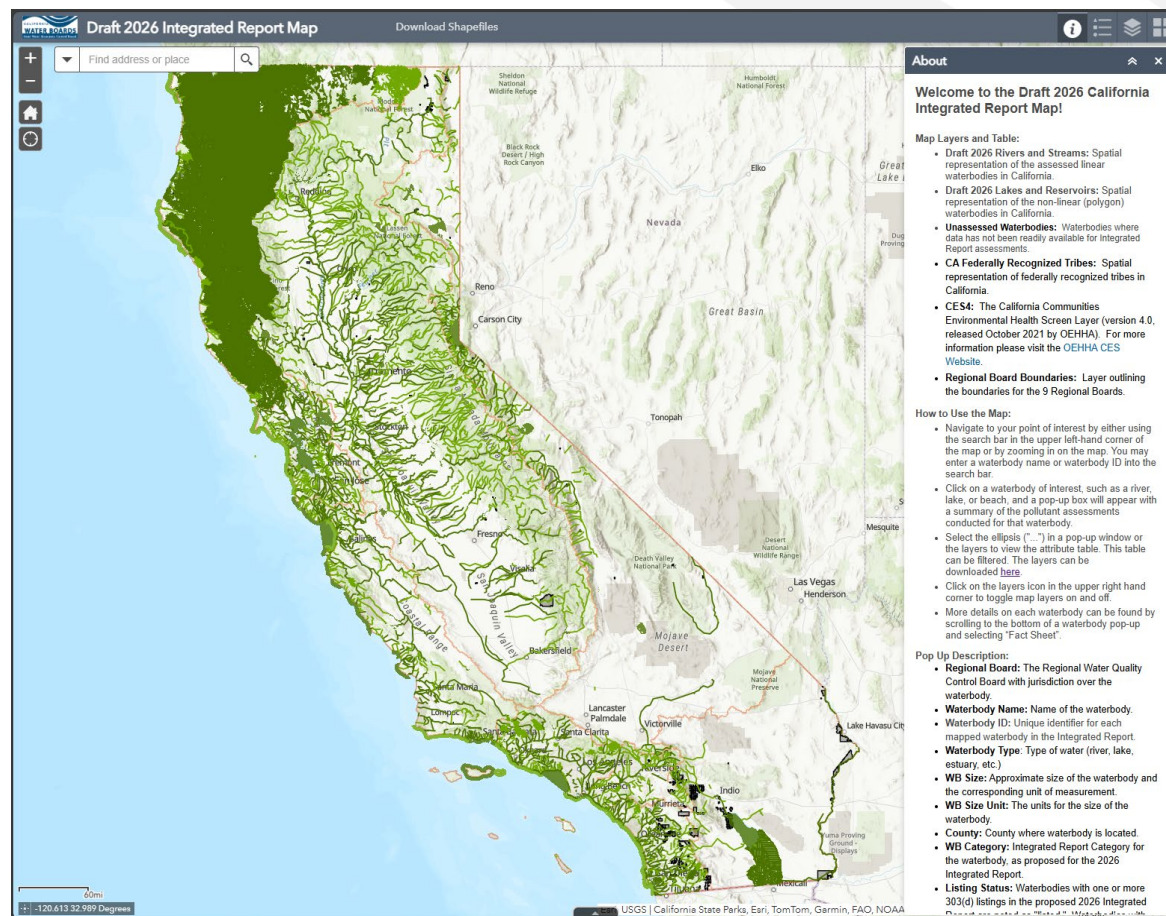
- Mercury
- DDT
- Diazinon

**303(d) Listings**

**Line of Evidence (“LOE”) Level**

- Beneficial Use
- Matrix (Water, Sediment, Tissue)
- Monitoring Project

# Demo: 2026 Integrated Report Visualization and Mapping Tool



<https://gispublic.waterboards.ca.gov/portal/apps/webappviewer/index.html?id=cf5e137099334cbdac9e08a567b36e40>

# 15 Minute Break

Please return at  
3:05PM

Next:  
Q&A Session



# In Scope for this Workshop

- To help you formulate formal comments
- To answer clarifying questions on:
  - The organization of the Integrated Report to ensure that you understand the context and its component parts.
  - Process improvements.
  - How to navigate available information and resources to help you locate information.
  - Region-specific assessments, if appropriate.
- If we need more time to research your question, we may need to follow-up.
- Questions asked today may also be submitted in writing if you also want that question to be addressed in our formal response to comments.

# In Scope for this Workshop, cont.

- Clarifying Questions: Asked to gain a better understanding of a statement, idea, or request. Clarifying questions are used to remove confusion and ambiguity, and to ensure that everyone involved understands the information.
  - Example: What is the difference between waterbody categories 4a and 4b and how do I find out which category the Blue River is placed in?
  - Example: What is the evaluation guideline used to assess beneficial use attainment for Blue River and how can I find more information on that evaluation guideline?
  - Example: Where do I find more information about the methodology used for aluminum assessments?

# Out of Scope for this Workshop

- The purpose does not include discussing or accepting formal comments.
- Formal Comments: An official statement (or opinion) of agreement or disagreement.
  - Example: Disagreement with assessment methodologies applied.
  - Example: The Blue River should be placed in waterbody category 4a because there is a USEPA approved TMDL.
  - Example: The Blue River should not be listed for pesticides because I don't agree with the evaluation guideline used to assess beneficial use attainment.
  - Example: The assessment methodology for pollutant [X] should be revised because...

# Out of Scope for this Workshop

- If you are unsure, please ask!
- If you voice a statement or opinion today, we will suggest that you make a formal comment.
- Formal comments should be submitted in writing on or before 12pm on April 2, 2025, and/or made orally at the Public Hearing on March 18, 2025.
- Notice of Opportunity for Public Comment, Public Staff Workshop, and Public Hearing

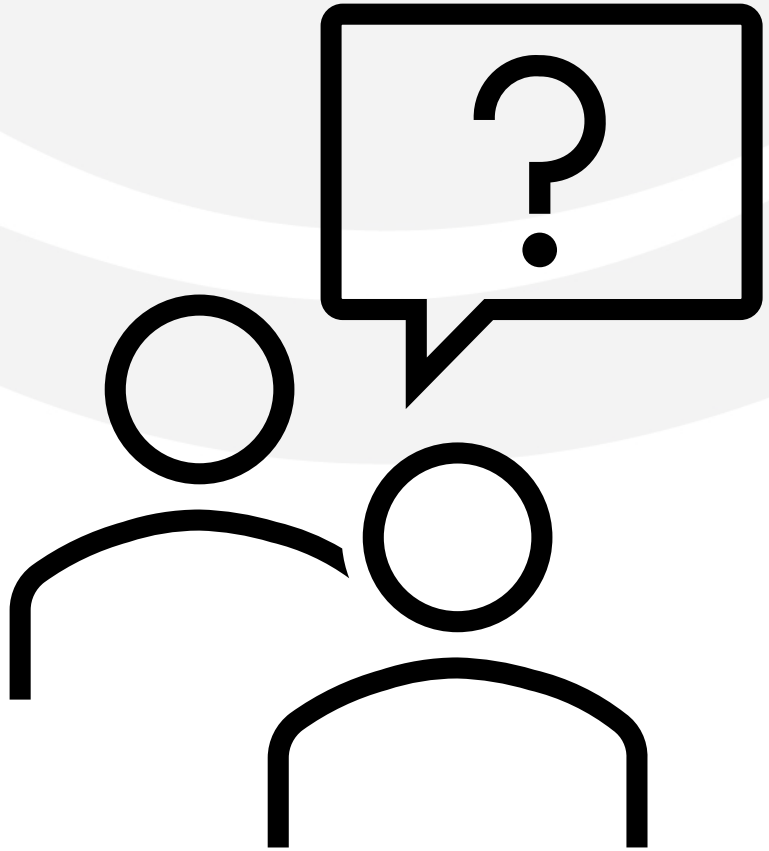
[https://www.waterboards.ca.gov/board\\_info/calendar/docs/2025/feb/notice\\_2026integratedrpt\\_010225.pdf](https://www.waterboards.ca.gov/board_info/calendar/docs/2025/feb/notice_2026integratedrpt_010225.pdf)

# Q&A Session

Let's meet our Regional Board staff!

To ask a question or to comment:

- "Raise Hand"
- Type in your question in the Q&A box.





# Thank you for attending today!



## How to Contact IR Staff

- Questions? Contact:
  - Ana Maria Saenz, Senior Environmental Scientist  
[AnaMaria.Saenz@waterboards.ca.gov](mailto:AnaMaria.Saenz@waterboards.ca.gov)
  - Lilibeth Rodriguez, Environmental Scientist  
[Lilibeth.Rodriguez@waterboards.ca.gov](mailto:Lilibeth.Rodriguez@waterboards.ca.gov)
- [Regional Board Staff Contact Information](#)
- Not sure who to contact? Email the Integrated Report Inbox and we'll forward you to the appropriate staff person:
  - [wqassessment@waterboards.ca.gov](mailto:wqassessment@waterboards.ca.gov)