

U.S. Trends

Map
(/sltrends/slrmap.htm)

U.S. Regional

Trends

Select

Global Regional

Trends

(/sltrends/globalregions)

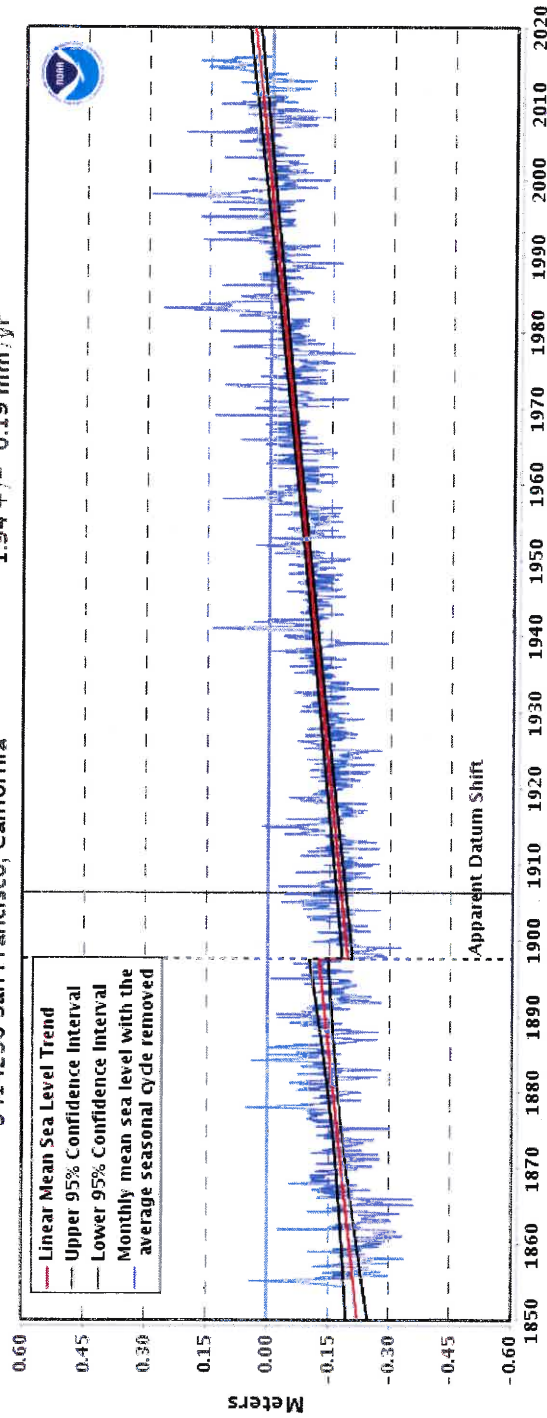
Anomalies

Select



(http://tidesandcurrents.noaa.gov/redirect.shtml?url=14)

9414290 San Francisco, California 1.94 +/- 0.19 mm/yr



EXPORT TO TEXT (DOWNLOADMEANSEALEVELTRENDSTEXT.HTM?STNID=9414290)

| EXPORT TO CSV (DOWNLOADMEANSEALEVELTRENDSCSV.HTM?STNID=9414290) | SAVE IMAGE

The mean sea level trend is 1.94 millimeters/year with a 95% confidence interval of +/- 0.19 mm/yr based on monthly mean sea level data from 1897 to 2015 which is equivalent to a change of 0.64 feet in 100 years. [Metadata: Apparent datum shift]

The plot shows the monthly mean sea level without the regular seasonal fluctuations due to coastal ocean temperatures, salinities, winds, atmospheric pressures, and ocean currents. The long-term linear trend is also shown, including its 95% confidence interval. The plotted values are relative to the most recent Mean Sea Level datum established by CO-OPS (http://tidesandcurrents.noaa.gov/datum_options.html). The calculated trends for all stations are available as a table in <http://tidesandcurrents.noaa.gov/century.msIUSTrendsTable.htm> (0.3 meters = 1 foot). If present, solid vertical lines indicate times of any major earthquakes in the vicinity of the station and dashed vertical lines bracket any periods of questionable data or datum shift.

Products available at 9414290 San Francisco, California

TIDES/WATER LEVELS

METEOROLOGICAL/OTHER

OPERATIONAL FORECAST SYSTEMS

U.S. Trends

Map
 (/strends/srmap.htm)

U.S. Regional

Trends
 Select

Global Regional

Trends
 (/strends/globalregione)

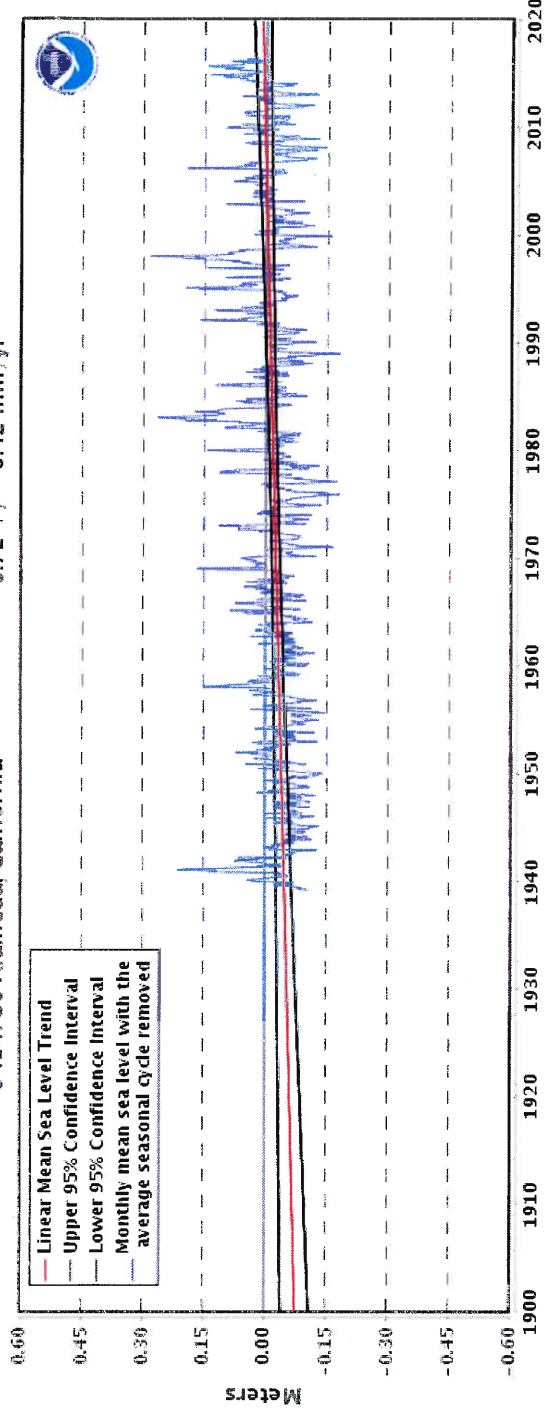
Anomalies

Select



(<http://tidesandcurrents.noaa.gov/redirect.shtml>
 url=14)

9414750 Alameda, California 0.72 +/- 0.42 mm/yr



EXPORT TO TEXT (DOWNLOADMEANSEALEVELTRENDSTEXT.HTM?STNID=9414750)

| EXPORT TO CSV (DOWNLOADMEANSEALEVELTRENDSCSV.HTM?STNID=9414750) | SAVE IMAGE

The mean sea level trend is 0.72 millimeters/year with a 95% confidence interval of +/- 0.42 mm/yr based on monthly mean sea level data from 1939 to 2015 which is equivalent to a change of 0.24 feet in 100 years.

The plot shows the monthly mean sea level without the regular seasonal fluctuations due to coastal ocean temperatures, salinities, winds, atmospheric pressures, and ocean currents. The long-term linear trend is also shown, including its 95% confidence interval. The plotted values are relative to the most recent Mean Sea Level datum established by CO-OPS (http://tidesandcurrents.noaa.gov/datum_options.html). The calculated trends for all stations are available as a table in millimeters/year and in feet/century (<mslUS TrendsTable.htm>) (0.3 meters = 1 foot).

If present, solid vertical lines indicate times of any major earthquakes in the vicinity of the station and dashed vertical lines bracket any periods of questionable data or datum shift.

Products available at 9414750 Alameda, California

TIDES/WATER LEVELS

METEOROLOGICAL/OTHER

OPERATIONAL FORECAST SYSTEMS

This station is not a member of OFS

U.S. Regional

Trends

Select



Global Regional

Trends

(/strends/globalregione

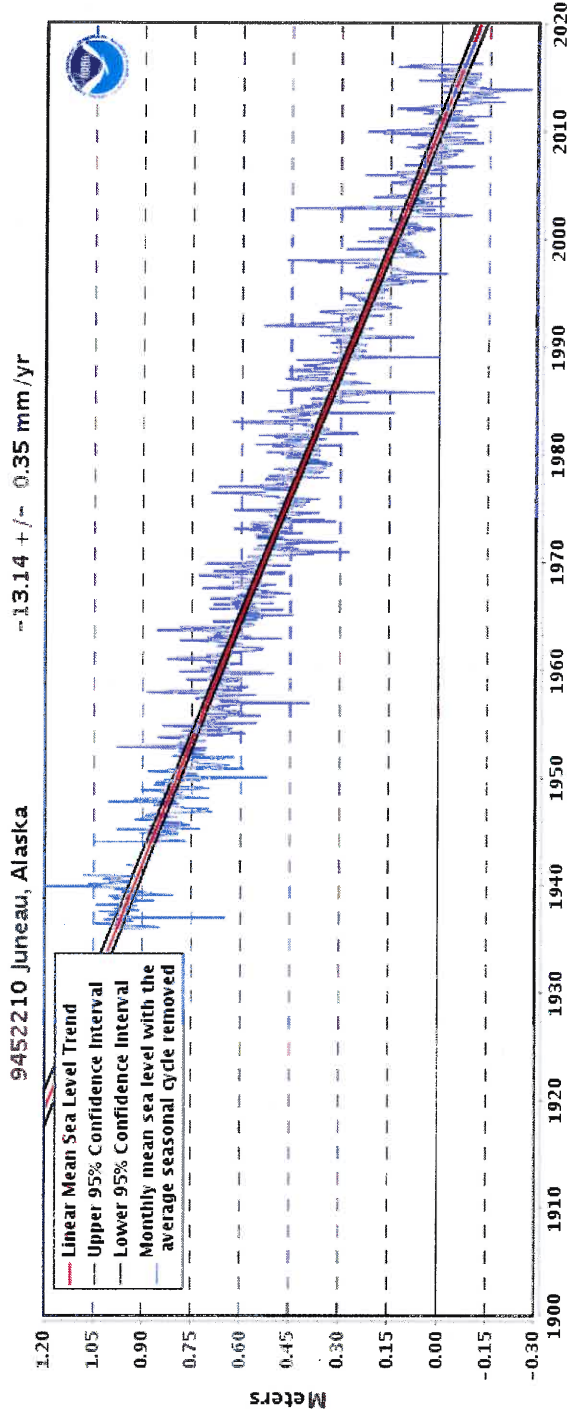
Anomalies

Select



([http://tidesandcurrents.noaa.gov/redirect.shtml?EXPORT_TO_TEXT\(DOWNLOADMEANSEALEVELTRENDS&STATIONID=9452210\)&EXPORT_TO_CSV\(DOWNLOADMEANSEALEVELTRENDS&STATIONID=9452210\)&SAVE_IMAGE](http://tidesandcurrents.noaa.gov/redirect.shtml?EXPORT_TO_TEXT(DOWNLOADMEANSEALEVELTRENDS&STATIONID=9452210)&EXPORT_TO_CSV(DOWNLOADMEANSEALEVELTRENDS&STATIONID=9452210)&SAVE_IMAGE))

url=14)



The mean sea level trend is **-13.14 millimeters/year with a 95% confidence interval of +/- 0.35 mm/yr based on monthly mean sea level data from 1936 to 2015 which is equivalent to a change of -4.31 feet in 100 years.**

The plot shows the monthly mean sea level without the regular seasonal fluctuations due to coastal ocean temperatures, salinities, winds, atmospheric pressures, and ocean currents. The long-term linear trend is also shown, including its 95% confidence interval. The plotted values are relative to the most recent Mean Sea Level datum established by CO-OPS (http://tidesandcurrents.noaa.gov/datum_options.html). The calculated trends for all stations are available as a [table in millimeters/year](#) and in [feet/century \(mslUSTrendsTable.htm\)](#) (0.3 meters = 1 foot). If present, solid vertical lines indicate times of any major earthquakes in the vicinity of the station and dashed vertical lines bracket any periods of questionable data or datum shift.

Products available at **9452210 Juneau, Alaska**

TIDES/WATER LEVELS

METEOROLOGICAL/OTHER

OPERATIONAL FORECAST SYSTEMS

This station is not a member of OFS

Search

PRODUCTS

(/products.html) Data, Analyses, and Publications

PROGRAMS

(/programs.html) Serving the Nation

EDUCATION

(/education.html) Tides, Currents, and Predictions

HELP & ABOUT

(/about.html) Info and how to reach us

Home (/) / Products (/products.html) / Sea Level Trends

SEA LEVEL TRENDS

Mean Sea Level Trend

Interannual Variation

Average Seasonal Cycle

Variation Of 50-Year

(seasonal.htm?stnid=060-041)

MSL Trends

Home/Map

Previous MSL Trends

(/sltrends/sltrends.html)

U.S. Stations

(/sltrends/sltrends_us.htm)

Global Stations

(/sltrends/sltrends_glot

Data Tables

Select

U.S. Trends

Map

(/sltrends/slmap.htm)

U.S. Regional

Trends

**Mean Sea Level Trends
060-041 Pietarsaari/Jakobstad, Finland**

060-041 Pietarsaari/Jakobstad, Finland

-7.29 +/- 0.57 mm/yr

