

CWF Part 2 Hearing
Rebuttal Testimony

**SDWA-323-Revised
Errata Dated 8-16-2018**

8 revised Pages

1
2
3
4
5
6
7
8
9
10
11
12
13
14
15
16
17
18
19
20
21
22
23
24
25
26
27
28

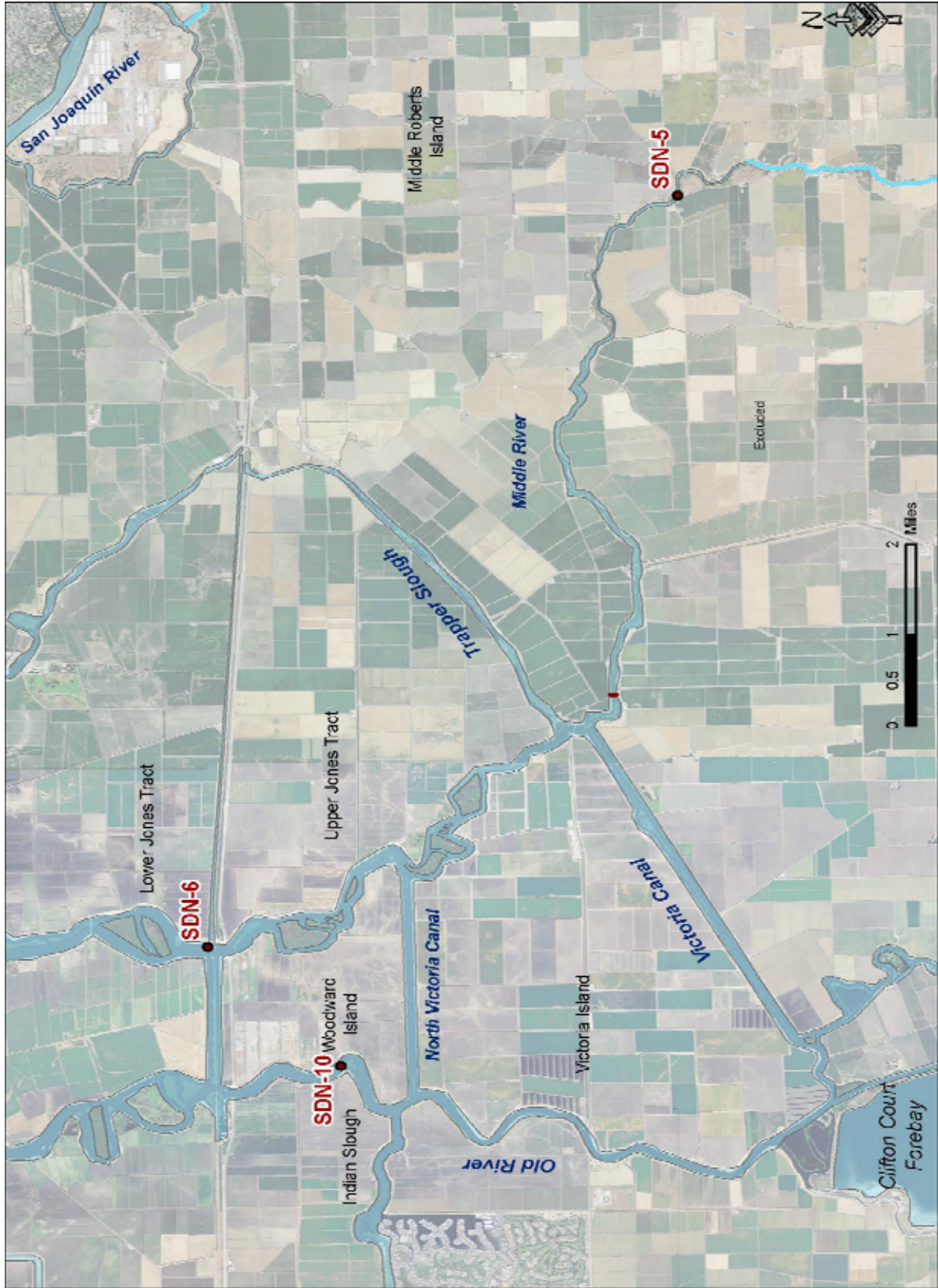


Figure 1 Location of the Central Delta Salinity Analysis Points (8-16-2018 Errata)

Rebuttal Testimony of Thomas K. Burke, Part 2

1
2
3
4
5
6
7
8
9
10
11
12
13
14
15
16
17
18
19
20
21
22
23
24
25
26
27
28

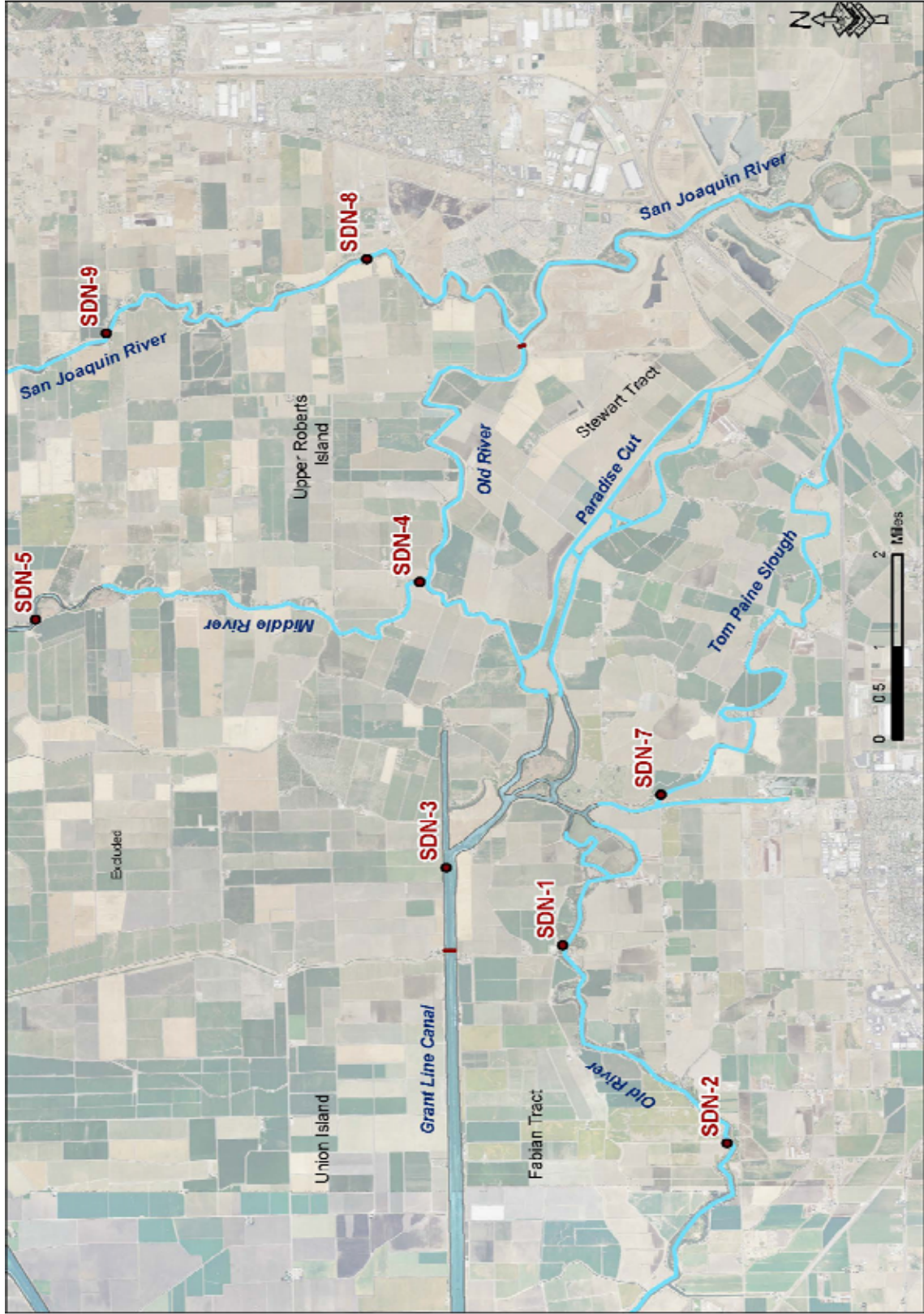


Figure 2 Location of the South Delta Salinity Analysis Points (8-16-2018 Errata)

Rebuttal Testimony of Thomas K. Burke, Part 2

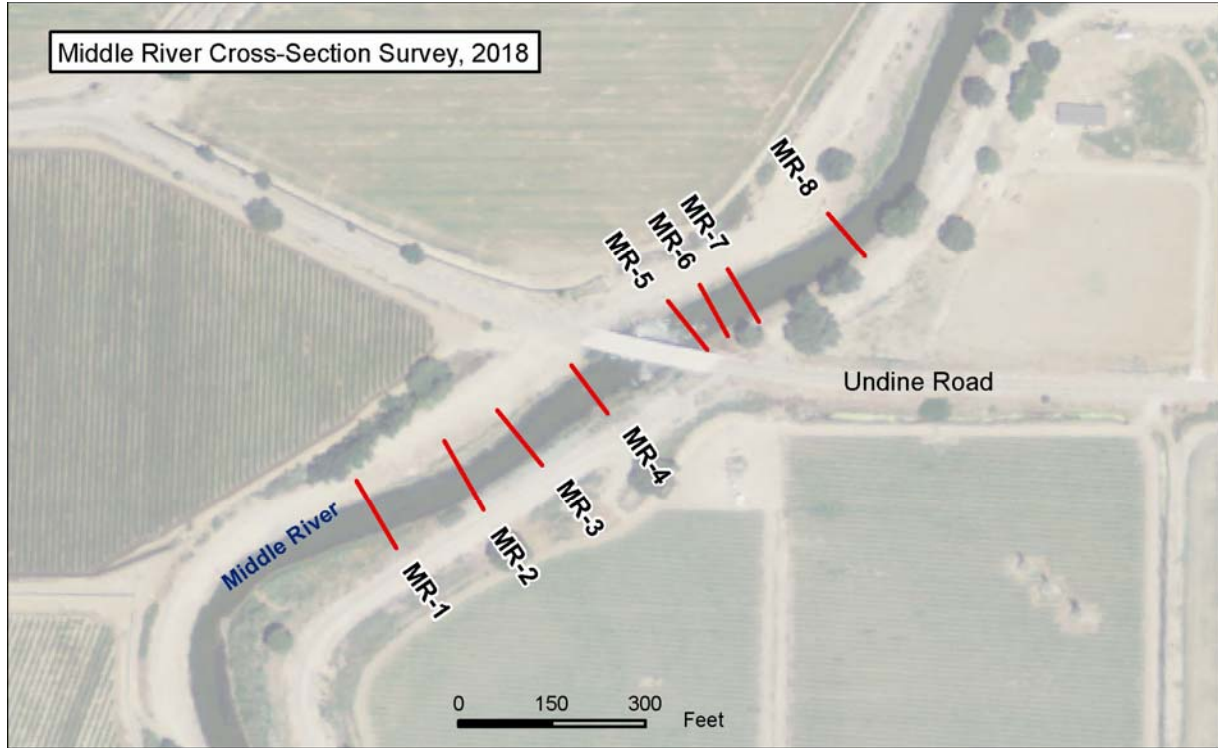


Figure 8 Location of Surveyed Cross-Sections on Middle River.

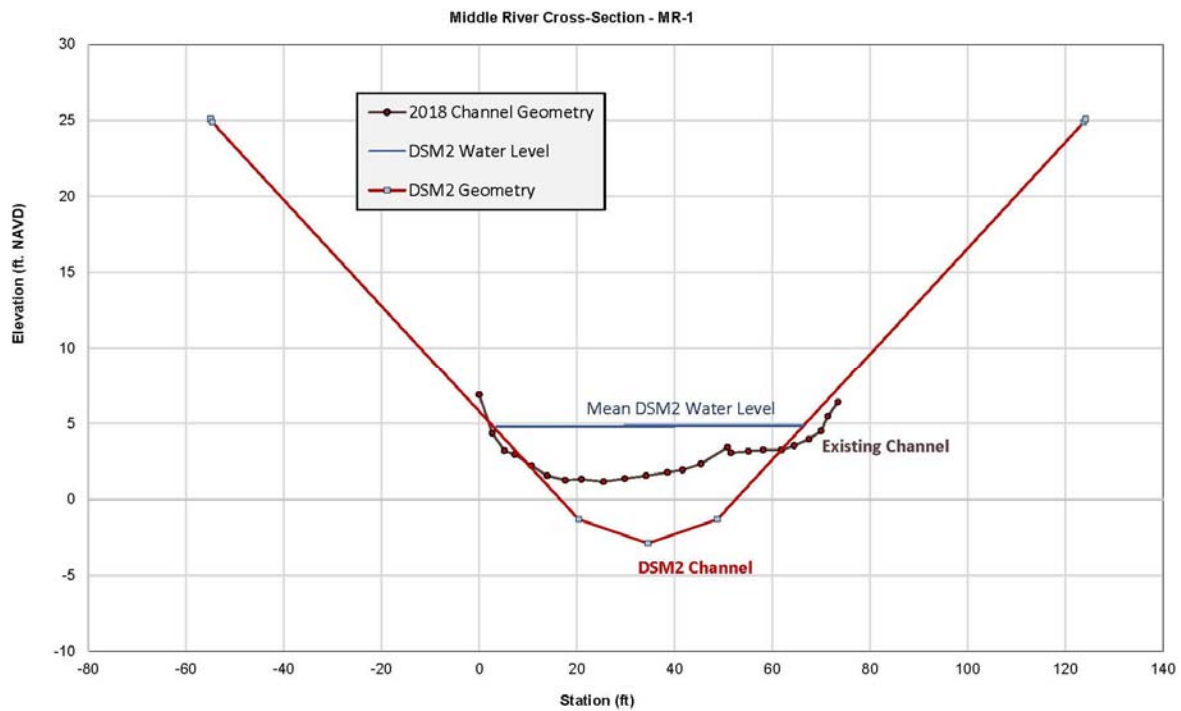


Figure 9 Comparison of DSM2 Geometry at Middle River Cross-Section MR-1 (8-16-18 Errata)

Rebuttal Testimony of Thomas K. Burke, Part 2

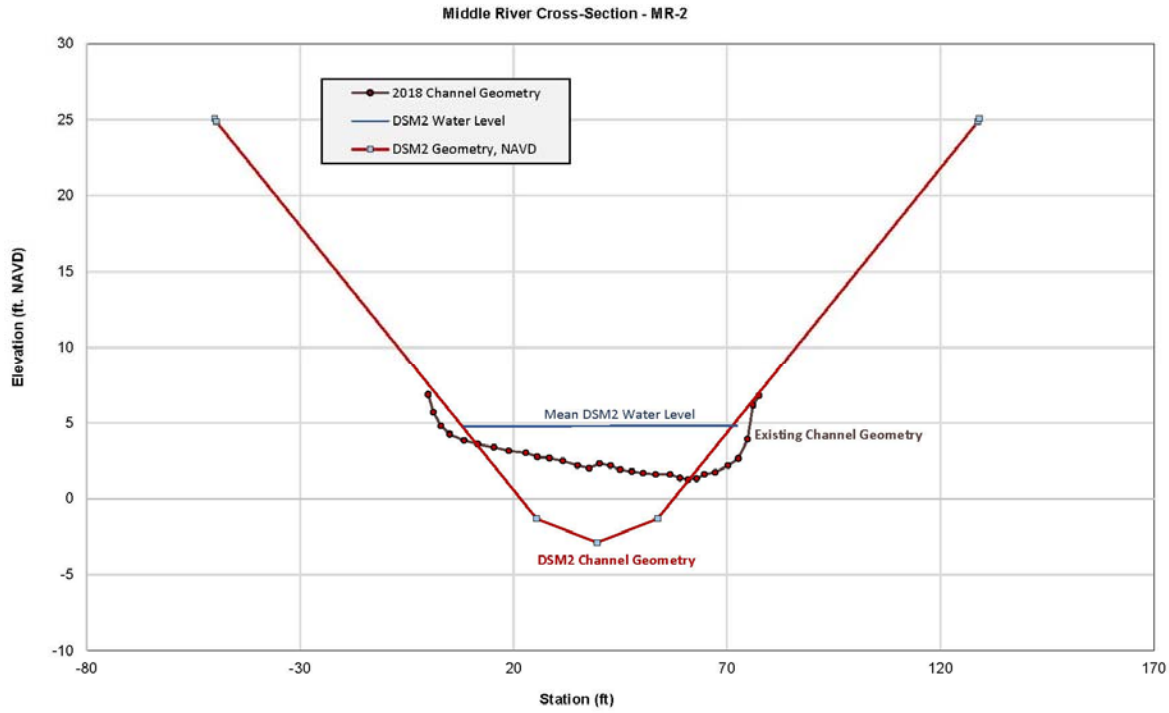


Figure 10 Comparison of DSM2 Geometry at Middle River Cross-Section MR-2 (8-16-18 Errata)

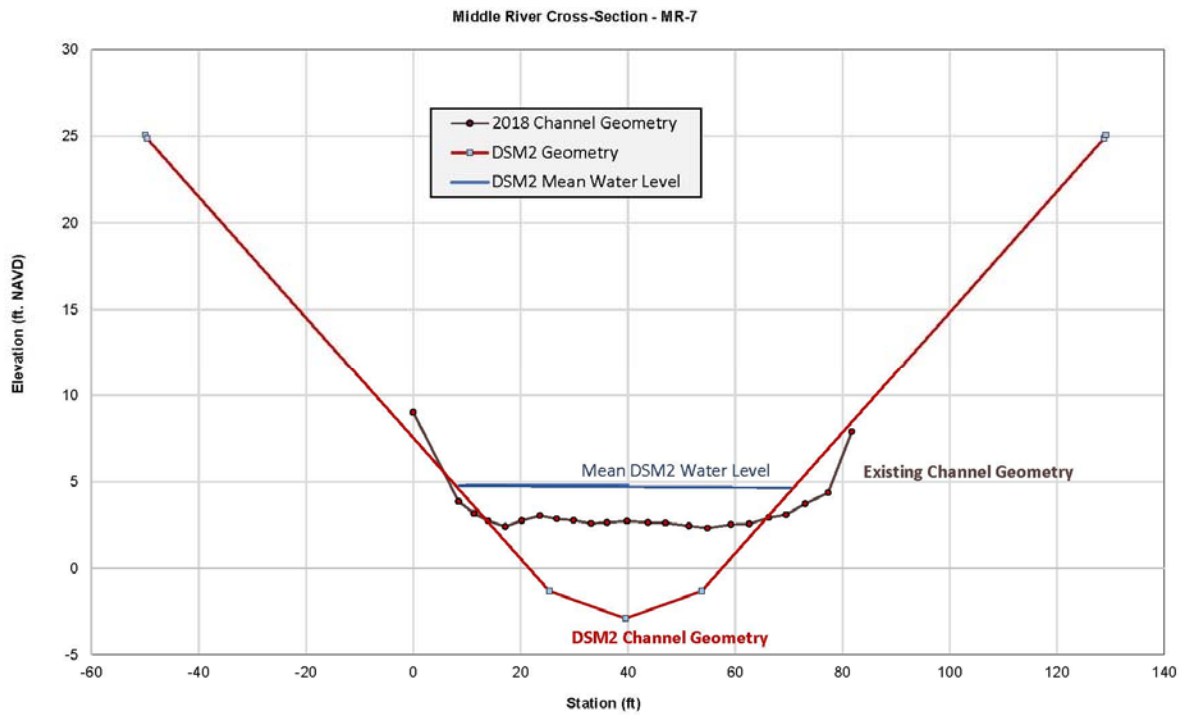


Figure 11 Comparison of DSM2 Geometry at Middle River Cross-Section MR-7 (8-16-18 Errata)

Rebuttal Testimony of Thomas K. Burke, Part 2

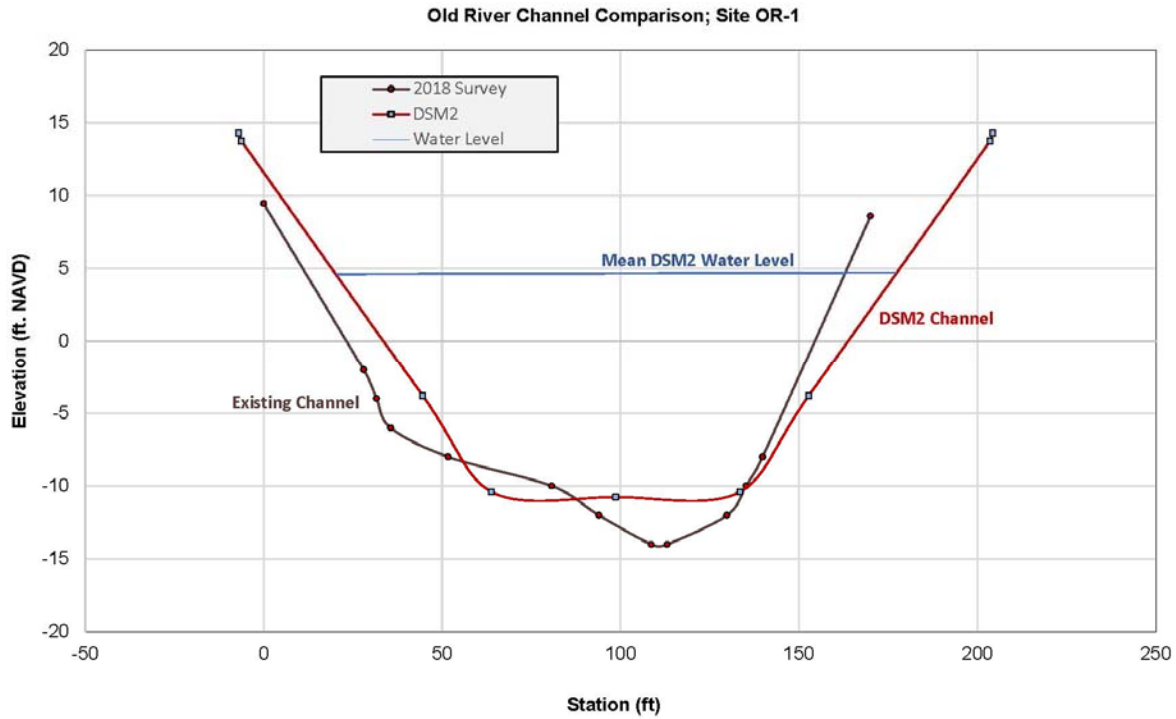


Figure 15 Old River Cross-Section; Site OR-1 (8-16-2018 Errata)

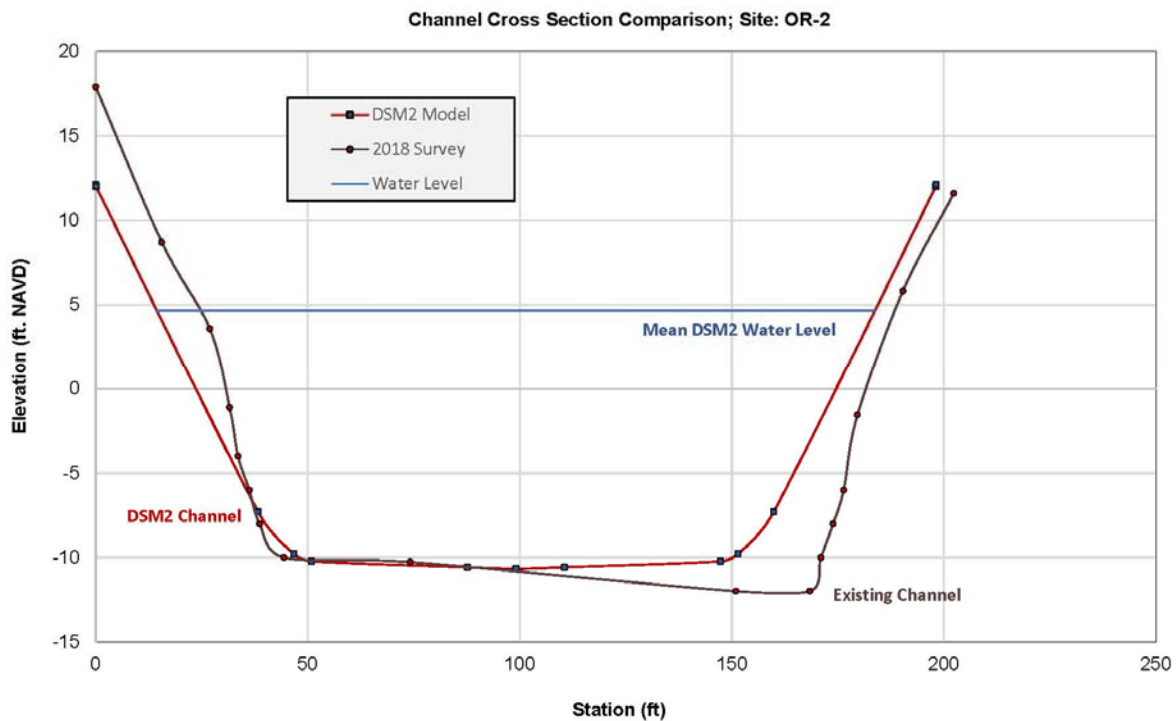


Figure 16 Old River Cross-Section; Site OR-2 (8-16-2018 Errata)

Rebuttal Testimony of Thomas K. Burke, Part 2

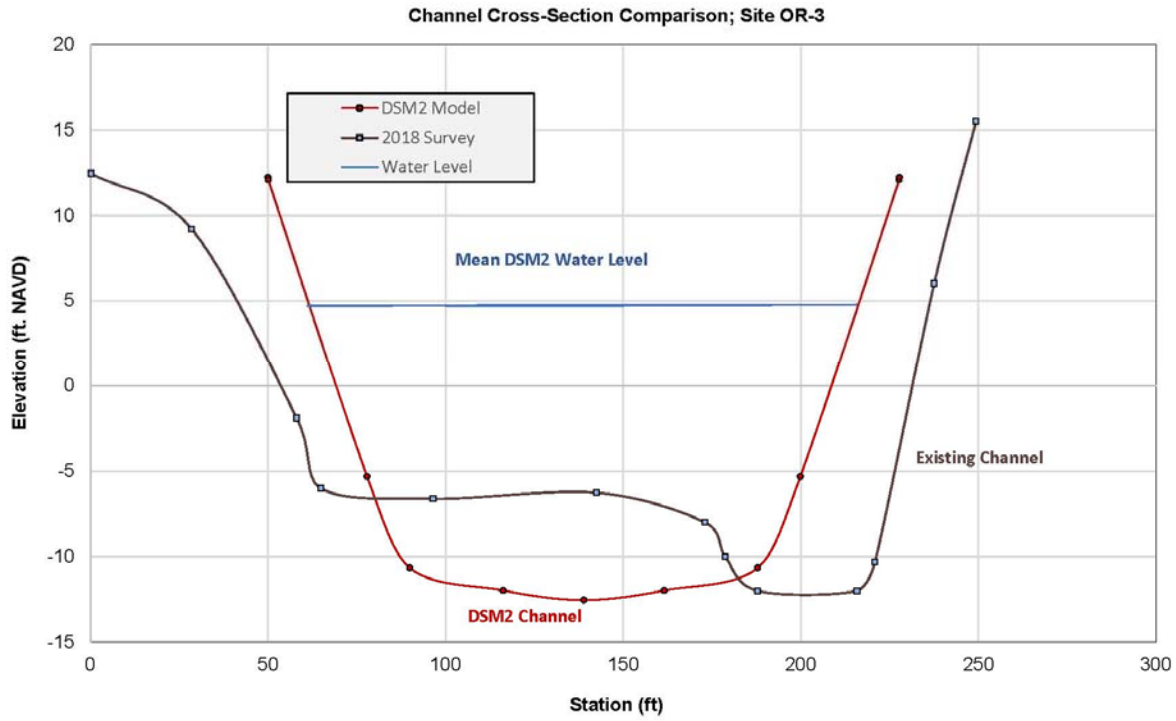


Figure 17 Old River Cross-Section; Site OR-3 (8-16-2018 Errata)

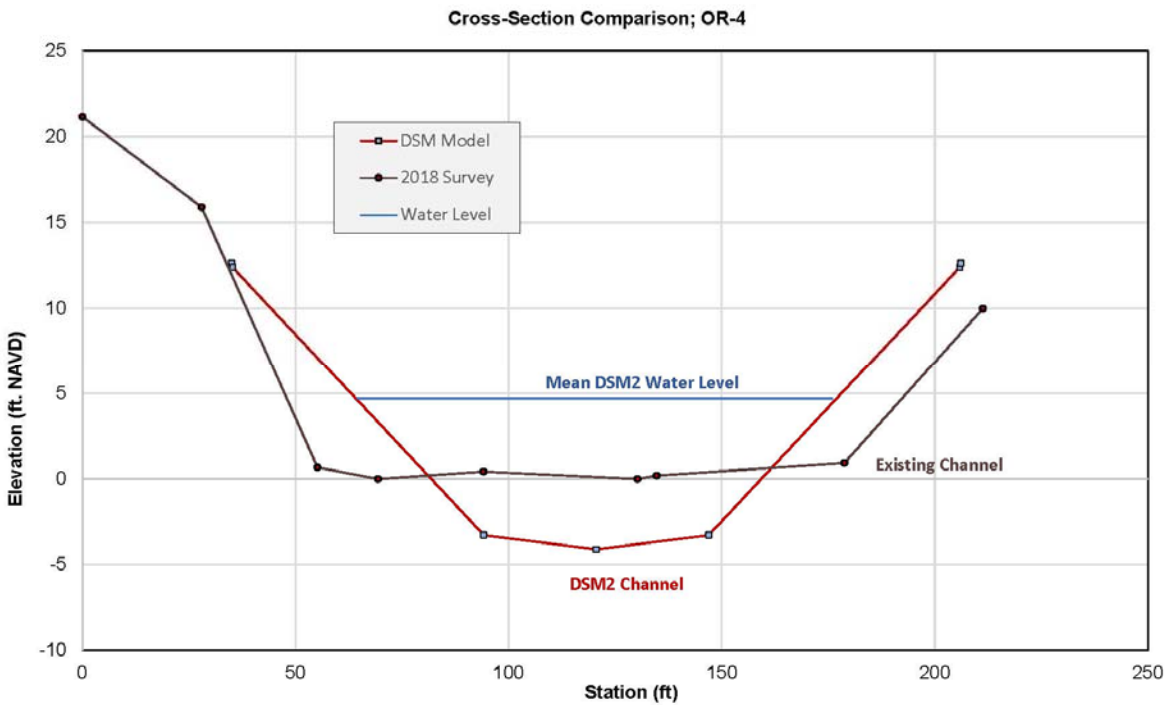


Figure 18 Old River Cross-Section; Site OR-4 (8-16-2018 Errata)

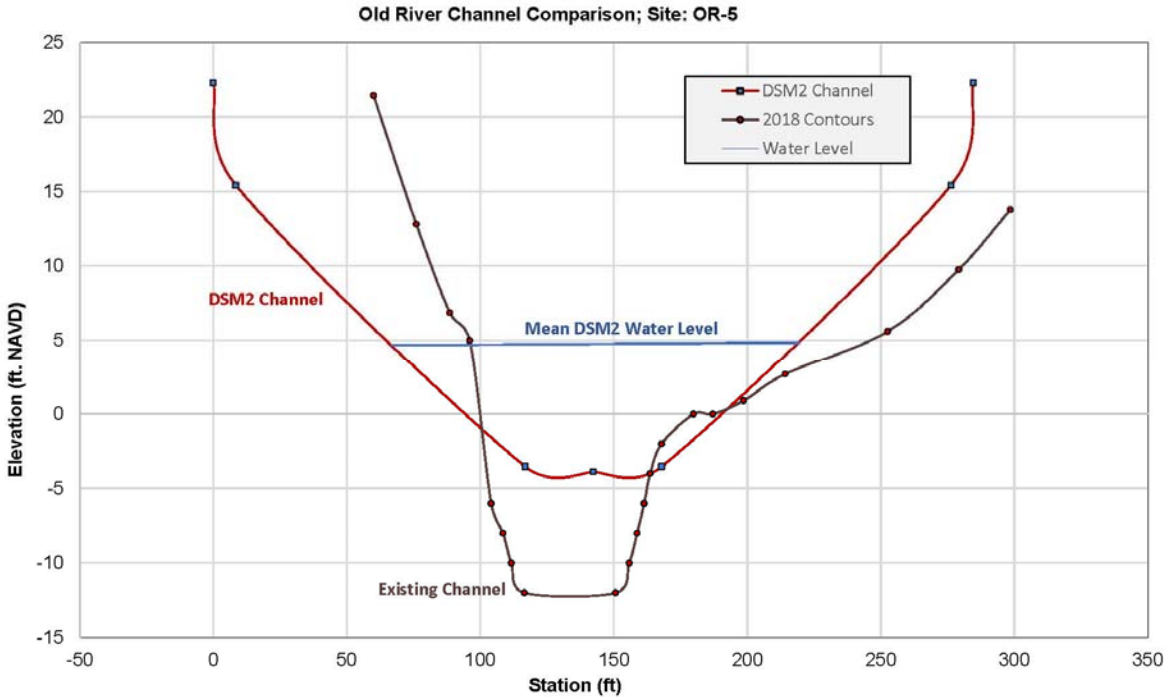


Figure 19 Old River Cross-Section; Site OR-5 (8-16-2018 Errata)

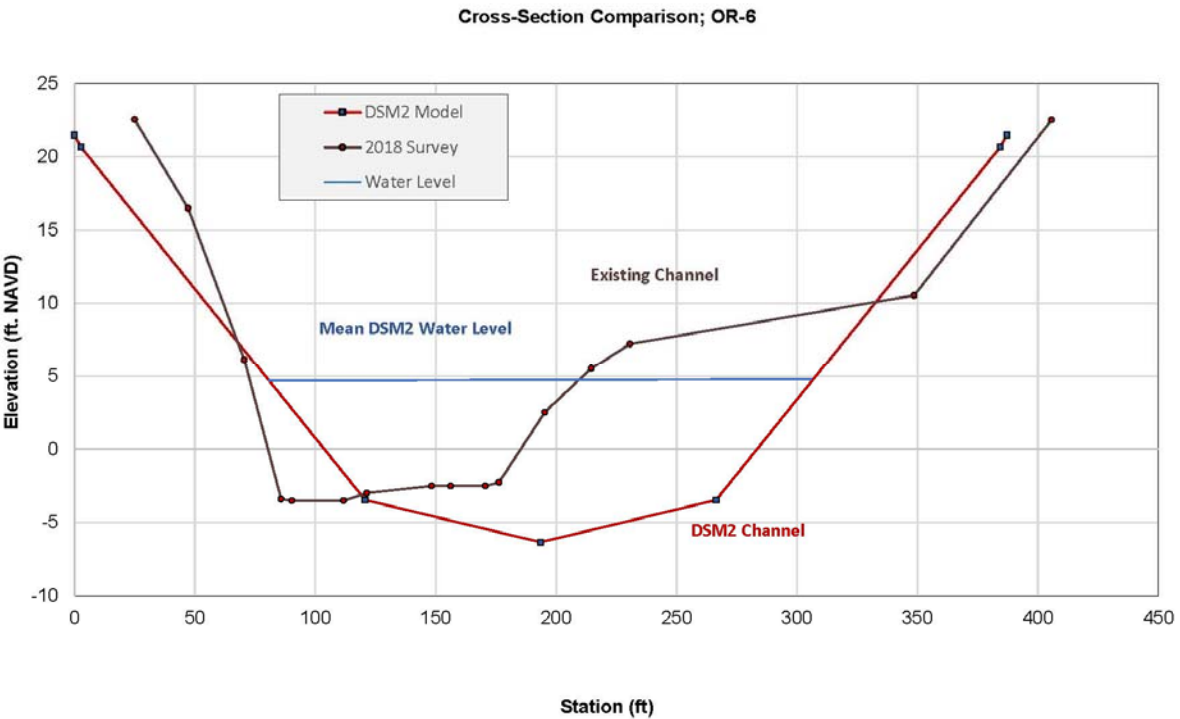


Figure 20 Old River Cross-Section; Site OR-6 (8-16-2018 Errata)

Rebuttal Testimony of Thomas K. Burke, Part 2

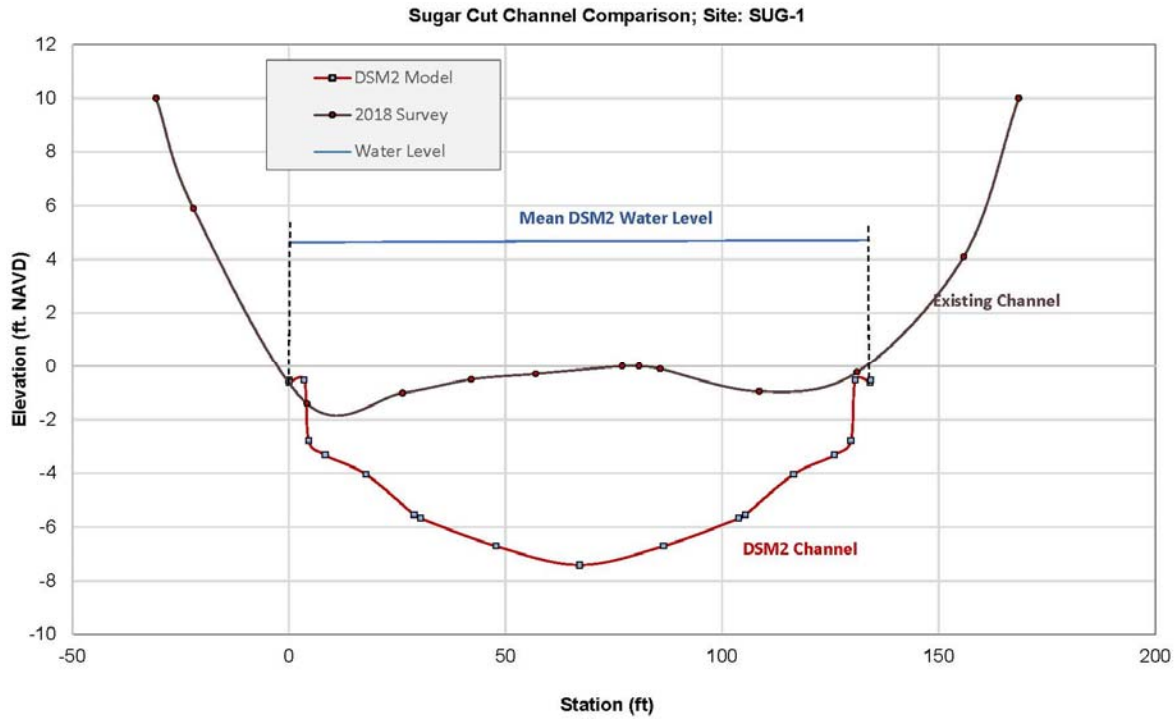


Figure 21 Old River Cross-Section; Site SUG-2 (8-16-2018 Errata)

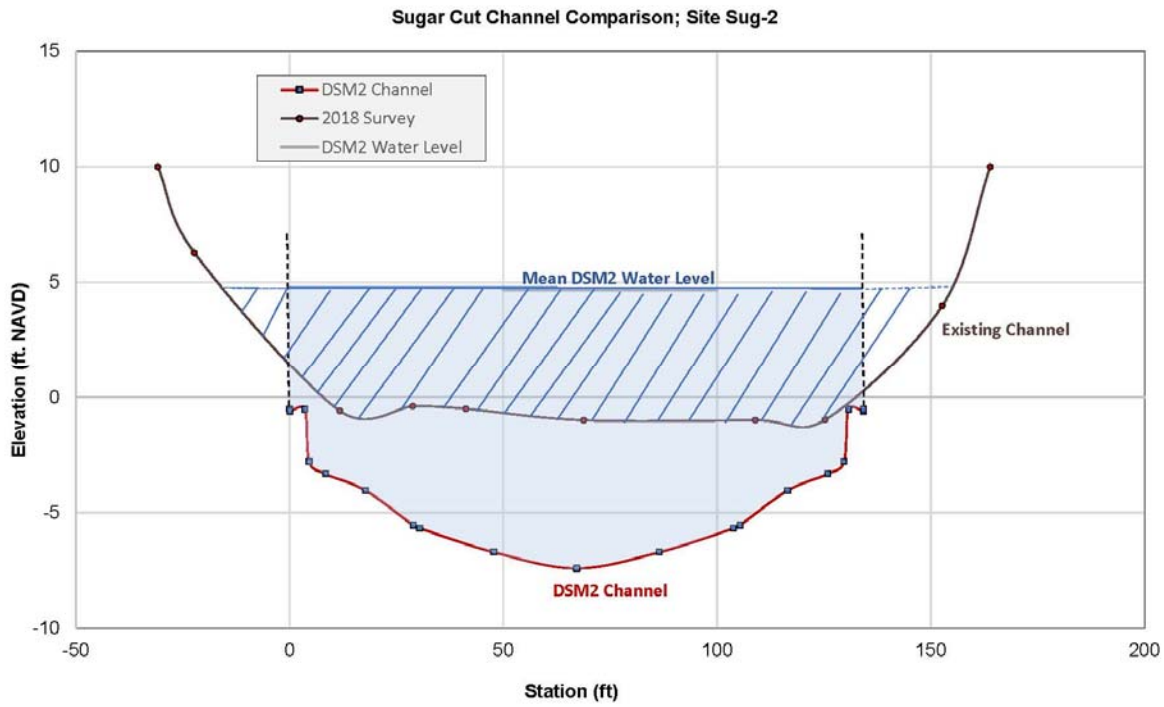


Figure 22 Old River Cross-Section; Site SUG-1 (8-16-2018 Errata)

Rebuttal Testimony of Thomas K. Burke, Part 2