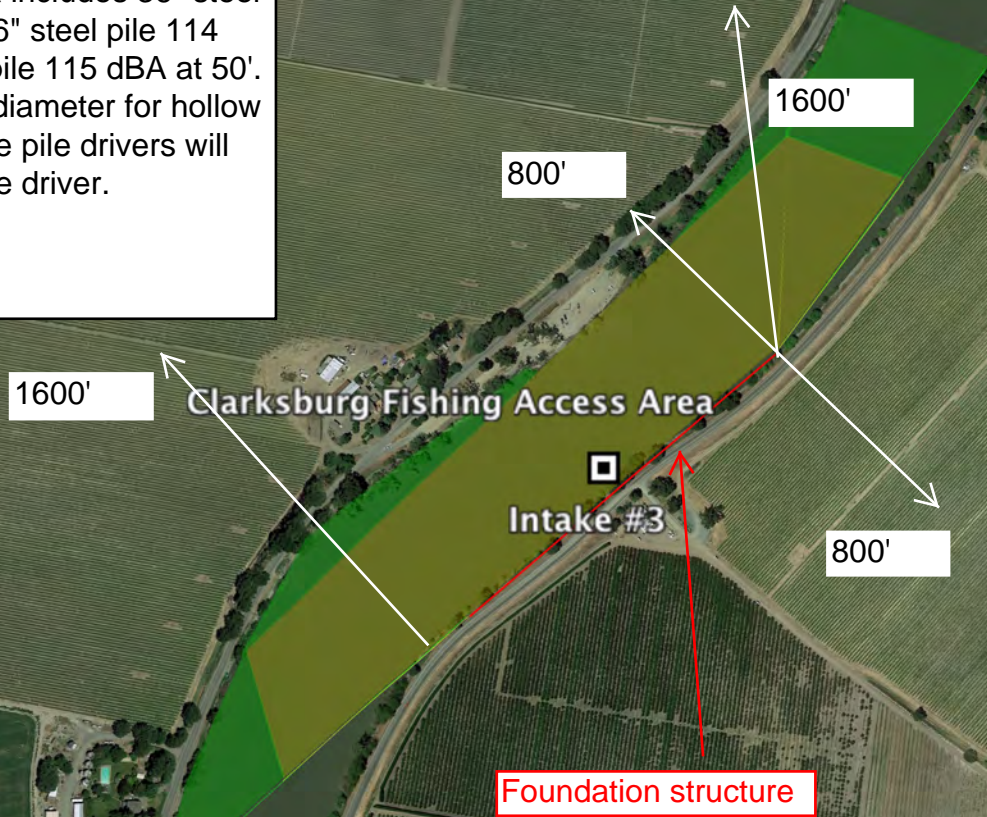


- - - - - 85 dBA zone  
 - - - - - 91 dBA zone  
**INTAKE #3**  
 dBA zones based on assumption of 115 dBA at 50' for impact pile driving on 42" steel pile. U.S.F.W.S recommends assuming 115 dBA for 30" in-water hollow steel piles for single pile. CWF will use 42" steel piles with four impact drivers working simultaneously. Measured record data includes 36" steel pile 113 dBA at 50'; 36" steel pile 114 dBA at 50'; 36" steel pile 115 dBA at 50'. Noise increases with diameter for hollow steel piles and multiple pile drivers will be louder than a single driver.



Four impact pile drivers working simultaneously driving a total of 850 42" diameter X 100' foot steel foundation piles to refusal. Each pile may require two or more 100' piles spliced. Approximate hammer energy rating for foundation piles = 165,000 ft-lbs. Foundation pile-driving scheduled start 6/2/2025 finish 10/31/2025. Foundation length = 1373'

Prior to driving round steel foundation piles, a sheet-pile coffer dam will be installed. Sheet piles will be installed with a combination of vibratory and impact pile-driving. There will be 2500 sheet piles Sheet pile pile-driving schedule start 6/3/2024 finish 10/31/2024. Cofferdam length = 1,600'