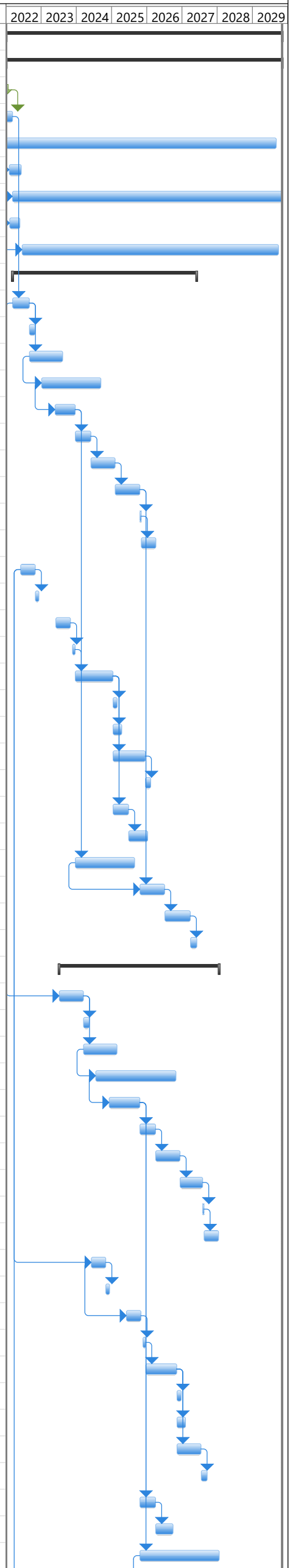


Appendix 3.D, Construction Schedule for the Proposed Action

North Delta Diversion Construction Schedule

ID	Task Name	Duration	Start	Finish	2022	2023	2024	2025	2026	2027	2028	2029
1	Intakes	2046 days?	Mon 1/3/22	Mon 11/5/29								
2	General task	2046 days	Mon 1/3/22	Mon 11/5/29								
3	Intakes NTP	0 days	Mon 1/3/22	Mon 1/3/22								
4	Contractor Mobilization	48 days	Mon 1/3/22	Wed 3/9/22								
5	Contractor Staff	2000 days	Tue 1/4/22	Mon 9/3/29								
6	Erect Temp contractor Facilities	90 days	Wed 2/2/22	Tue 6/7/22								
7	Operate Temp Facilities	2000 days	Tue 3/8/22	Mon 11/5/29								
8	Erect Batch Plant	76 days	Tue 2/8/22	Tue 5/24/22								
9	Operate Batch Plant	1900 days	Thu 6/16/22	Wed 9/26/29								
10	Intake 5	1365 days	Thu 3/10/22	Wed 6/2/27								
11	Initial Site Work	124 days	Thu 3/10/22	Tue 8/30/22								
12	Substation & Electrical Distribution	43 days	Wed 8/31/22	Fri 10/28/22								
13	Construct Slurry Wall (Land side)	248 days	Wed 8/31/22	Fri 8/11/23								
14	Construct Well Point dewatering	440 days	Wed 1/4/23	Tue 9/10/24								
15	Remove peat and excavate subgrade	150 days	Wed 5/24/23	Tue 12/19/23								
16	Improve soil	116 days	Wed 12/20/23	Wed 5/29/24								
17	Consrut box conduits under new road	180 days	Thu 5/30/24	Wed 2/5/25								
18	Construct new highway 160 slope	183 days	Thu 2/6/25	Mon 10/20/25								
19	reroute traffic	10 days	Tue 10/21/25	Mon 11/3/25								
20	Construct Diaphragm Wall	109 days	Tue 11/4/25	Fri 4/3/26								
21	Construct sheet pile coffer dam (in water window)	109 days	Wed 6/1/22	Mon 10/31/22								
22	excavate/ dewater cofferdam	27 days	Tue 11/1/22	Wed 12/7/22								
23	Drilled casing (in water window)	109 days	Thu 6/1/23	Tue 10/31/23								
24	Pour tremmie concrete at intake	20 days	Tue 11/21/23	Mon 12/18/23								
25	Construct intake structure	280 days	Tue 12/19/23	Mon 1/13/25								
26	Intake 5:Gates	32 days	Tue 1/14/25	Wed 2/26/25								
27	MEP	65 days	Tue 1/14/25	Mon 4/14/25								
28	Fish Screens	240 days	Tue 1/14/25	Mon 12/15/25								
29	Finish Out	40 days	Tue 12/16/25	Mon 2/9/26								
30	Construct soil improvements	116 days	Tue 1/14/25	Tue 6/24/25								
31	Construct remaining box conduits	142 days	Wed 6/25/25	Thu 1/8/26								
32	Install dewatering systemem on land side	440 days	Wed 12/20/23	Tue 8/26/25								
33	Construct Sediment basin soil improvements on	184 days	Tue 10/21/25	Fri 7/3/26								
34	Construct landside facilities	190 days	Mon 7/6/26	Fri 3/26/27								
35	Finish paving	48 days	Mon 3/29/27	Wed 6/2/27								
36	Intake 3	1187 days	Thu 7/6/23	Fri 1/21/28								
37	Initial Site Work	180 days	Thu 7/6/23	Wed 3/13/24								
38	Substation & Electrical Distribution	43 days	Thu 3/14/24	Mon 5/13/24								
39	Construct Slurry Wall (Land side)	248 days	Thu 3/14/24	Mon 2/24/25								
40	Construct Well Point dewatering	596 days	Thu 7/18/24	Thu 10/29/26								
41	Remove peat and excavate subgrade	228 days	Thu 12/5/24	Mon 10/20/25								
42	Improve soil	116 days	Tue 10/21/25	Tue 3/31/26								
43	Consrut box conduits under new road	182 days	Wed 4/1/26	Thu 12/10/26								
44	Construct new highway 160 slope	167 days	Fri 12/11/26	Mon 8/2/27								
45	reroute traffic	10 days	Tue 8/3/27	Mon 8/16/27								
46	Construct Diaphragm Wall	109 days	Tue 8/17/27	Fri 1/14/28								
47	Construct sheet pile coffer dam (in water window)	109 days	Mon 6/3/24	Thu 10/31/24								
48	excavate/ dewater cofferdam	27 days	Fri 11/1/24	Mon 12/9/24								
49	Drilled casing (in water window)	110 days	Mon 6/2/25	Fri 10/31/25								
50	Pour tremmie concrete at intake	20 days	Fri 11/21/25	Thu 12/18/25								
51	Construct intake structure	231 days	Fri 12/19/25	Fri 11/6/26								
52	Gates	32 days	Mon 11/9/26	Tue 12/22/26								
53	MEP	65 days	Mon 11/9/26	Fri 2/5/27								
54	Fish Screens	180 days	Mon 11/9/26	Fri 7/16/27								
55	Finish Out	45 days	Mon 7/19/27	Fri 9/17/27								
56	Construct soil improvements	116 days	Tue 10/21/25	Tue 3/31/26								
57	Construct remaining box conduits	129 days	Wed 4/1/26	Mon 9/28/26								
58	Install dewatering systemem on land side	589 days	Tue 10/21/25	Fri 1/21/28								

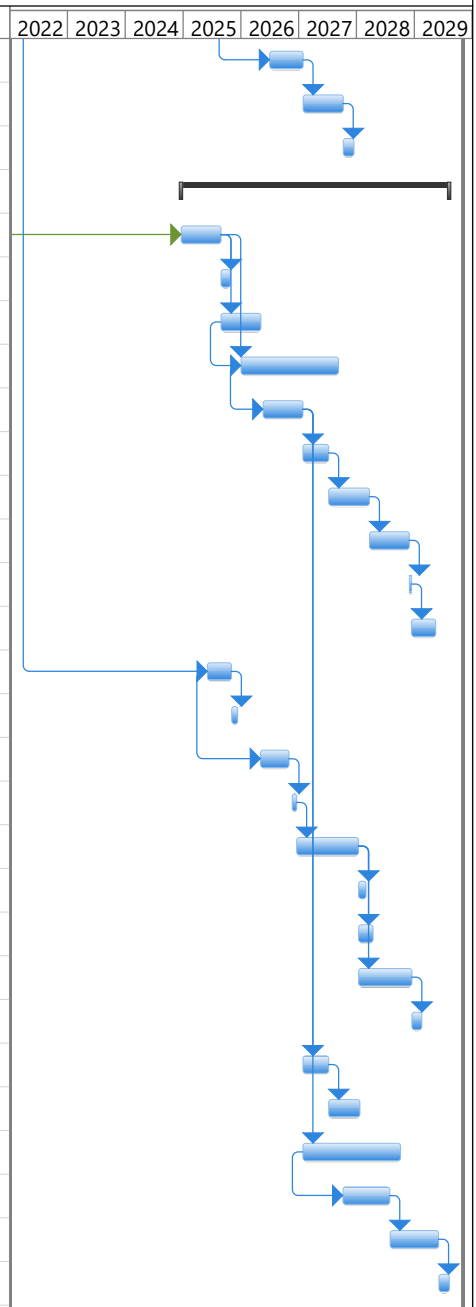


Project: Intake construction sch
Date: Tue 7/19/16

Task		Inactive Summary		External Tasks	
Split		Manual Task		External Milestone	
Milestone		Duration-only		Deadline	
Summary		Manual Summary Rollup		Progress	
Project Summary		Manual Summary		Manual Progress	
Inactive Task		Start-only			
Inactive Milestone		Finish-only			

North Delta Diversion Construction Schedule

ID	Task Name	Duration	Start	Finish	2022	2023	2024	2025	2026	2027	2028	2029
59	Construct Sediment basin soil improvements on	152 days	Tue 6/30/26	Wed 1/27/27								
60	Construct landside facilities	181 days	Thu 1/28/27	Thu 10/7/27								
61	Finish paving	48 days	Fri 10/8/27	Tue 12/14/27								
62	Intake 2	1211 days?	Wed 12/18/24	Wed 8/8/29								
63	Initial Site Work	180 days	Wed 12/18/24	Tue 8/26/25								
64	Substation & Electrical Distribution	43 days	Wed 8/27/25	Fri 10/24/25								
65	Construct Slurry Wall (Land side)	180 days	Wed 8/27/25	Tue 5/5/26								
66	Construct Well Point dewatering	440 days	Wed 12/31/25	Tue 9/7/27								
67	Remove peat and excavate subgrade	180 days	Wed 5/20/26	Tue 1/26/27								
68	Improve soil	116 days	Wed 1/27/27	Wed 7/7/27								
69	Consrut box conduits under new road	184 days	Thu 7/8/27	Tue 3/21/28								
70	Construct new highway 160 slope	180 days	Wed 3/22/28	Tue 11/28/28								
71	reroute traffic	10 days	Wed 11/29/28	Tue 12/12/28								
72	Construct Diaphragm Wall	109 days	Wed 12/13/28	Mon 5/14/29								
73	Construct sheet pile coffer dam (in water window)	110 days	Mon 6/2/25	Fri 10/31/25								
74	excavate/ dewater cofferdam	27 days	Mon 11/3/25	Tue 12/9/25								
75	Drilled casing piles (in water window)	130 days	Mon 5/4/26	Fri 10/30/26								
76	Pour tremmie concrete at intake	20 days	Fri 11/20/26	Thu 12/17/26								
77	Construct intake structure	280 days	Fri 12/18/26	Thu 1/13/28								
78	Gates	32 days	Fri 1/14/28	Mon 2/28/28								
79	MEP	65 days	Fri 1/14/28	Thu 4/13/28								
80	Fish Screens	240 days	Fri 1/14/28	Thu 12/14/28								
81	Finish Out	45 days	Fri 12/15/28	Thu 2/15/29								
82	Construct soil improvements	116 days	Wed 1/27/27	Wed 7/7/27								
83	Construct remaining box conduits	142 days	Thu 7/8/27	Fri 1/21/28								
84	Install dewatering system on land side	440 days	Wed 1/27/27	Tue 10/3/28								
85	Construct Sediment basin soil improvements on	213 days	Wed 10/6/27	Fri 7/28/28								
86	Construct landside facilities	220 days	Mon 7/31/28	Fri 6/1/29								
87	Finish paving	48 days	Mon 6/4/29	Wed 8/8/29								
88												
89												
90												
91												
92												
93												
94												
95												
96												
97												
98												
99												
100												
101												
102												
103												
104												
105												
106												
107												



Project: Intake construction sch
Date: Tue 7/19/16

Task		Inactive Summary		External Tasks	
Split		Manual Task		External Milestone	
Milestone		Duration-only		Deadline	
Summary		Manual Summary Rollup		Progress	
Project Summary		Manual Summary		Manual Progress	
Inactive Task		Start-only			
Inactive Milestone		Finish-only			

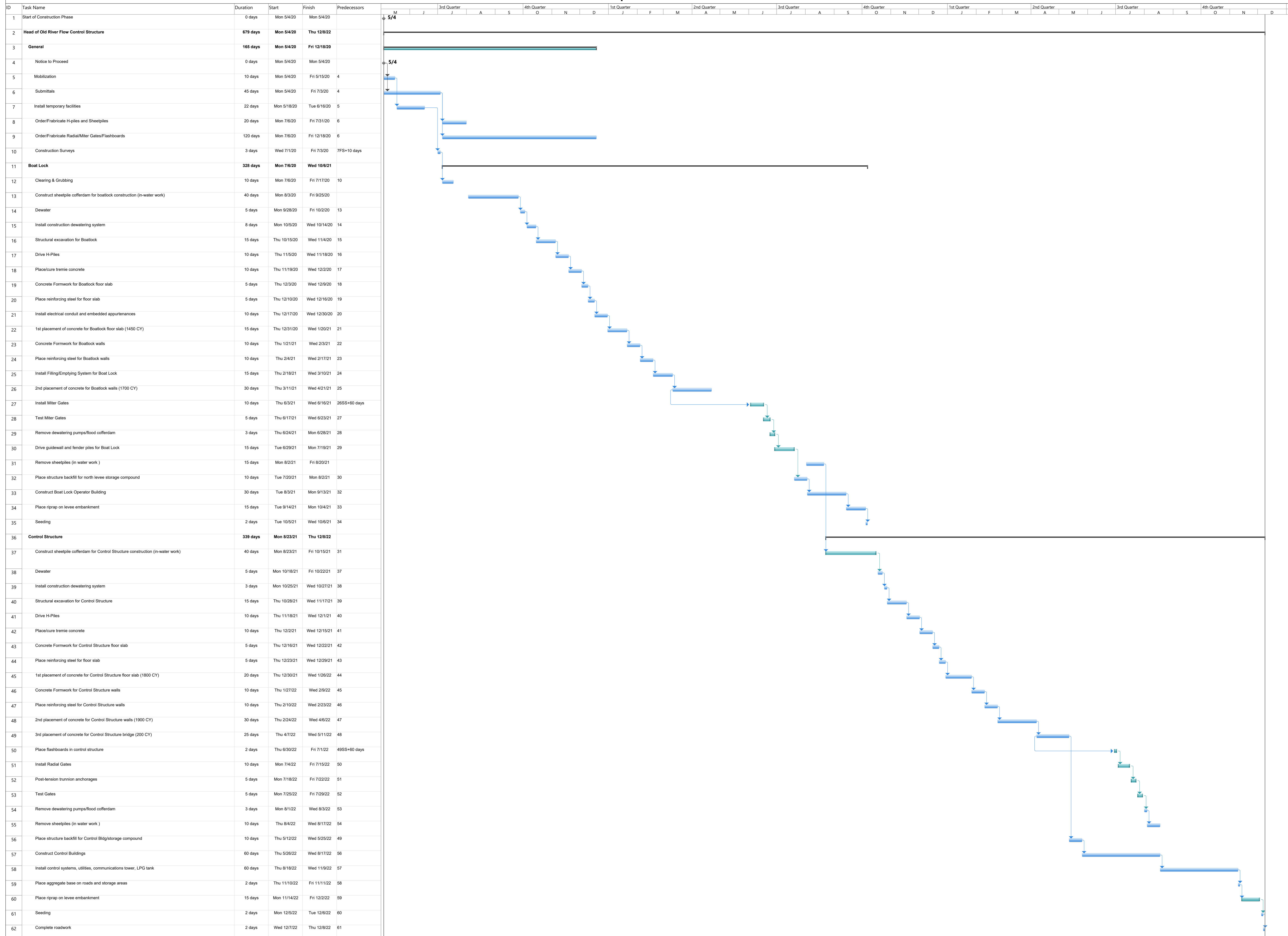
Clifton Court Construction Schedule

ID	Task Name	Duration	Start	Finish	2018	2019	2020	2021	2022	2023	2024	2025	2026	2027	2028
1	Start of Construction Phase	0 days	1/3/18	1/3/18	▶ 1/3										
2	Clifton Court Construction	1796 days	7/1/21	5/18/28	[Gantt bar from 7/1/21 to 5/18/28]										
3	General	1787 days	7/1/21	5/5/28	[Gantt bar from 7/1/21 to 5/5/28]										
4	Clifton Court NTP	0 days	7/1/21	7/1/21	◆ 7/1										
5	Mobilization	8 days	7/1/21	7/12/21	[Gantt bar from 7/1/21 to 7/12/21]										
6	Contract Mngt., Supervision, Admin.	1072 days	7/13/21	8/20/25	[Gantt bar from 7/13/21 to 8/20/25]										
7	Access Construction	241 days	7/13/21	6/14/22	[Gantt bar from 7/13/21 to 6/14/22]										
8	Temporary Facilities	261 days	6/15/22	6/14/23	[Gantt bar from 6/15/22 to 6/14/23]										
9	Batch Plant	861 days	6/15/23	10/1/26	[Gantt bar from 6/15/23 to 10/1/26]										
10	Temp Facility Operations	1277 days	6/15/23	5/5/28	[Gantt bar from 6/15/23 to 5/5/28]										
11	In Water Work Window	1674 days	7/1/21	11/30/27	[Gantt bar from 7/1/21 to 11/30/27]										
12	In Water Work Window 1	109 days	7/1/21	11/30/21	[Gantt bar from 7/1/21 to 11/30/21]										
13	In Water Work Window 2	109 days	7/1/22	11/30/22	[Gantt bar from 7/1/22 to 11/30/22]										
14	In Water Work Window 3	109 days	7/3/23	11/30/23	[Gantt bar from 7/3/23 to 11/30/23]										
15	In Water Work Window 4	109 days	7/1/24	11/28/24	[Gantt bar from 7/1/24 to 11/28/24]										
16	In Water Work Window 5	109 days	7/1/25	11/28/25	[Gantt bar from 7/1/25 to 11/28/25]										
17	In Water Work Window 6	109 days	7/1/26	11/30/26	[Gantt bar from 7/1/26 to 11/30/26]										
18	In Water Work Window 7	109 days	7/1/27	11/30/27	[Gantt bar from 7/1/27 to 11/30/27]										
19	Embankments	500 days	7/7/23	6/5/25	[Gantt bar from 7/7/23 to 6/5/25]										
20	SCCF Dike Southwest and Southeast	500 days	7/7/23	6/5/25	[Gantt bar from 7/7/23 to 6/5/25]										
21	SCCF Dredge Phase	1535 days	7/1/22	5/18/28	[Gantt bar from 7/1/22 to 5/18/28]										
22	SCCF Dredge Phase 1	109 days	7/1/22	11/30/22	[Gantt bar from 7/1/22 to 11/30/22]										
23	SCCF Dredge Phase 2	109 days	7/3/23	11/30/23	[Gantt bar from 7/3/23 to 11/30/23]										
24	SCCF Dredge Phase 3	109 days	7/1/24	11/28/24	[Gantt bar from 7/1/24 to 11/28/24]										
25	SCCF Dredge Phase 4	109 days	7/1/25	11/28/25	[Gantt bar from 7/1/25 to 11/28/25]										
26	SCCF Dredge Phase 5	109 days	7/1/26	11/30/26	[Gantt bar from 7/1/26 to 11/30/26]										
27	SCCF Remove existing southern dike	200 days	6/6/25	3/12/26	[Gantt bar from 6/6/25 to 3/12/26]										
28	Install sheet piles for partition dike	109 days	7/1/26	11/30/26	[Gantt bar from 7/1/26 to 11/30/26]										
29	CCF Partition Dike	306 days	12/1/26	2/1/28	[Gantt bar from 12/1/26 to 2/1/28]										
30	SCCF Install sheet piles for East and West Dikes	109 days	7/1/27	11/30/27	[Gantt bar from 7/1/27 to 11/30/27]										
31	SCCF Dike - Gate to Dike	100 days	12/1/27	4/18/28	[Gantt bar from 12/1/27 to 4/18/28]										
32	SCCF Dike West side	100 days	12/1/27	4/18/28	[Gantt bar from 12/1/27 to 4/18/28]										
33	NCCF Dike - West, North and East	383 days	12/1/26	5/18/28	[Gantt bar from 12/1/26 to 5/18/28]										
34	Relocate Byron Highway	101 days	7/3/23	11/20/23	[Gantt bar from 7/3/23 to 11/20/23]										
35	Relocate Railroad	99 days	7/3/23	11/16/23	[Gantt bar from 7/3/23 to 11/16/23]										
36	NCCF Install siphon sheet piles	109 days	7/3/23	11/30/23	[Gantt bar from 7/3/23 to 11/30/23]										
37	NCCF Siphon (Phase 1) Excavate	193 days	12/1/23	8/27/24	[Gantt bar from 12/1/23 to 8/27/24]										
38	NCCF Siphon (Phase 1) Concrete	157 days	8/28/24	4/3/25	[Gantt bar from 8/28/24 to 4/3/25]										
39	NCCF Siphon (Phase 1) Backfill	77 days	4/4/25	7/21/25	[Gantt bar from 4/4/25 to 7/21/25]										
40	NCCF Siphon (Phase 2) sheet piles	109 days	7/1/24	11/28/24	[Gantt bar from 7/1/24 to 11/28/24]										
41	NCCF Siphon (Phase 2) Excavate	177 days	11/29/24	8/4/25	[Gantt bar from 11/29/24 to 8/4/25]										
42	NCCF Siphon (Phase 2) Concrete	160 days	8/5/25	3/16/26	[Gantt bar from 8/5/25 to 3/16/26]										
43	NCCF Siphon (Phase 2) Backfill	74 days	3/17/26	6/26/26	[Gantt bar from 3/17/26 to 6/26/26]										
44	Byron Highway Bridge over Canal	108 days	11/7/25	4/7/26	[Gantt bar from 11/7/25 to 4/7/26]										
45	SP Railroad Bridge over Canal	110 days	11/7/25	4/9/26	[Gantt bar from 11/7/25 to 4/9/26]										
46	NCCF Outlet Canal	304 days	7/1/24	8/28/25	[Gantt bar from 7/1/24 to 8/28/25]										
47	Control Structure # 1 Excavate	101 days	7/1/24	11/18/24	[Gantt bar from 7/1/24 to 11/18/24]										
48	Control Structure # 1 Concrete	150 days	11/19/24	6/16/25	[Gantt bar from 11/19/24 to 6/16/25]										
49	Control Structure # 2 Excavate	107 days	7/1/24	11/26/24	[Gantt bar from 7/1/24 to 11/26/24]										
50	Control Structure # 2 Concrete	155 days	11/19/24	6/23/25	[Gantt bar from 11/19/24 to 6/23/25]										
51	Control Structure # 3 Excavate	104 days	8/29/25	1/21/26	[Gantt bar from 8/29/25 to 1/21/26]										
52	Control Structure # 3 Concrete	155 days	1/22/26	8/26/26	[Gantt bar from 1/22/26 to 8/26/26]										
53	Control Structure # 4 Excavate	104 days	8/29/25	1/21/26	[Gantt bar from 8/29/25 to 1/21/26]										
54	Control Structure # 4 Concrete	178 days	1/22/26	9/28/26	[Gantt bar from 1/22/26 to 9/28/26]										
55	Old River Structure Excavate	104 days	11/14/24	4/8/25	[Gantt bar from 11/14/24 to 4/8/25]										
56	Old River Structure Concrete	151 days	4/9/25	11/5/25	[Gantt bar from 4/9/25 to 11/5/25]										
57	New Spillway Excavate	104 days	5/26/25	10/16/25	[Gantt bar from 5/26/25 to 10/16/25]										
58	New Spillway Concrete	151 days	10/17/25	5/15/26	[Gantt bar from 10/17/25 to 5/15/26]										

Project: 20160706 Clifton Court
Date: 7/7/16

Task		Inactive Summary		External Tasks	
Split		Manual Task		External Milestone	
Milestone		Duration-only		Deadline	
Summary		Manual Summary Rollup		Progress	
Project Summary		Manual Summary		Manual Progress	
Inactive Task		Start-only			
Inactive Milestone		Finish-only			

California Water Fix - Operable Gate Construction Schedule



Barge Landings Construction Schedule

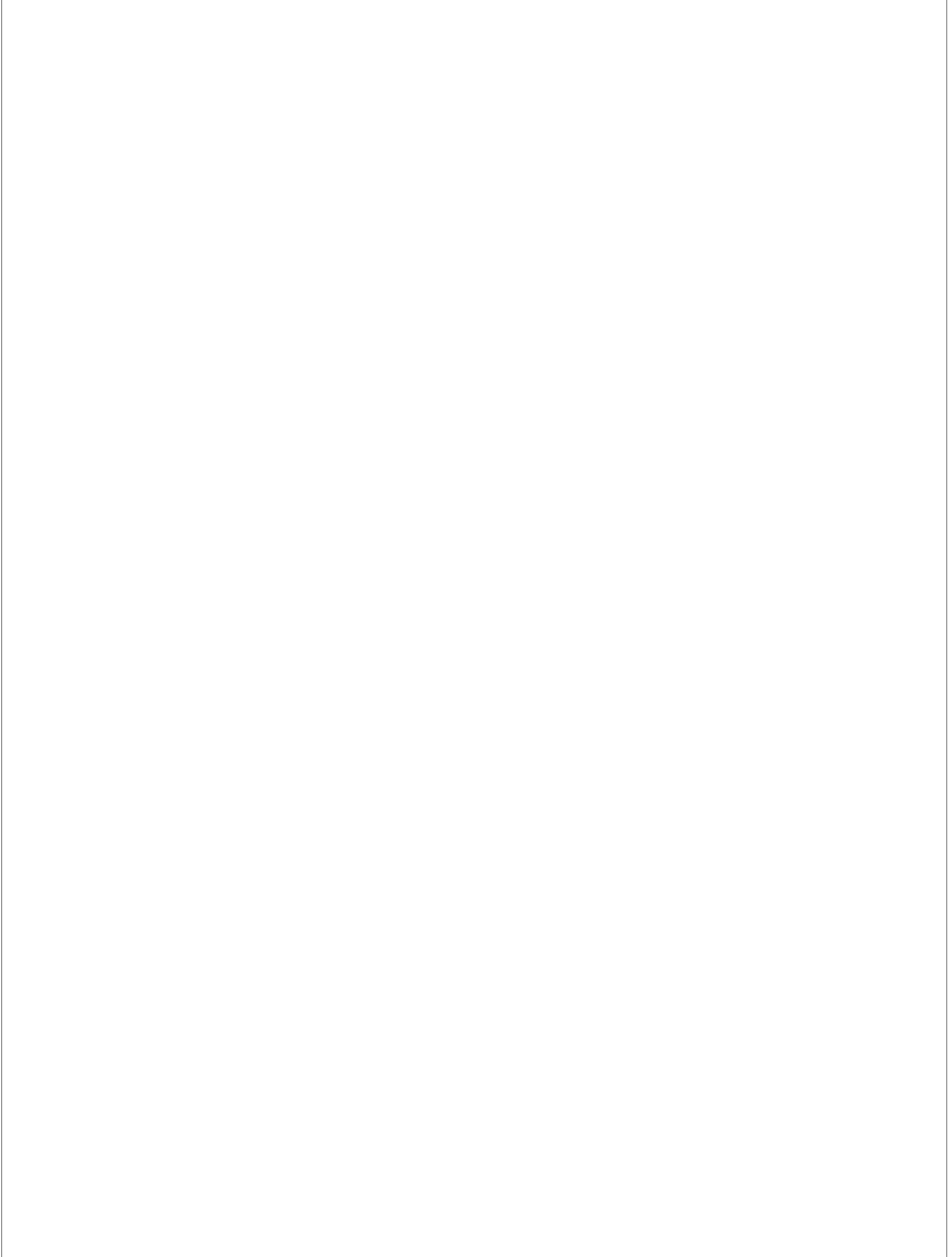
ID	Task Name	Duration	Start	Finish	2018												2019												2020											
					Jan	Feb	Mar	Apr	May	Jun	Jul	Aug	Sep	Oct	Nov	Dec	Jan	Feb	Mar	Apr	May	Jun	Jul	Aug	Sep	Oct	Nov	Dec	Jan	Feb	Mar	Apr	May	Jun	Jul	Aug	Sep	Oct	Nov	Dec
1	1																																							
2	Barge Landings	743 days	1/1/18	11/4/20	▶ 1/1																																			
3	Construction Phase Start	0 days	1/1/18	1/1/18																																				
4	General Tasks	678 days	4/2/18	11/4/20	▶ 4/2																																			
5	Barge Landings NTP	0 days	4/2/18	4/2/18																																				
6	Contractor mobilization	44 days	4/2/18	5/31/18																																				
7	Contractor staff	656 days	4/2/18	10/5/20																																				
8	Erect temp contracor facilities	88 days	5/2/18	8/31/18																																				
9	Operate temp facilities	568 days	9/3/18	11/4/20																																				
10	In-Water Work Window for Barge Landings	327 days	8/1/18	10/31/19																																				
11	In-Water Work Window for Barge Landings 1	66 days	8/1/18	10/31/18																																				
12	In-Water Work Window for Barge Landings 2	66 days	8/1/19	10/31/19																																				
13	Barge Landing near Clifton Court	264 days	8/1/18	8/5/19																																				
14	Install piles (in-water work)	66 days	8/1/18	10/31/18																																				
15	Install support structure	88 days	11/1/18	3/4/19																																				
16	Cast barge deck	66 days	3/5/19	6/4/19																																				
17	Finish	44 days	6/5/19	8/5/19																																				
18	Barge Landing near Bouldin Island	264 days	8/1/18	8/5/19																																				
19	Install piles (in-water work)	66 days	8/1/18	10/31/18																																				
20	Install support structure	88 days	11/1/18	3/4/19																																				
21	Cast barge deck	66 days	3/5/19	6/4/19																																				
22	Finish	44 days	6/5/19	8/5/19																																				
23	Barge Landing near Intermediate Forebay	264 days	8/1/18	8/5/19																																				
24	Install piles (in-water work)	66 days	8/1/18	10/31/18																																				
25	Install support structure	88 days	11/1/18	3/4/19																																				
26	Cast barge deck	66 days	3/5/19	6/4/19																																				
27	Finish	44 days	6/5/19	8/5/19																																				
28	Barge Landing near Bacon Island	264 days	8/1/19	8/4/20																																				
29	Install piles (in-water work)	66 days	8/1/19	10/31/19																																				
30	Install support structure	88 days	11/1/19	3/3/20																																				
31	Cast barge deck	66 days	3/4/20	6/3/20																																				
32	Finish	44 days	6/4/20	8/4/20																																				
33	Barge Landing near Venice Island	264 days	8/1/19	8/4/20																																				
34	Install piles (in-water work)	66 days	8/1/19	10/31/19																																				
35	Install support structure	88 days	11/1/19	3/3/20																																				
36	Cast barge deck	66 days	3/4/20	6/3/20																																				
37	Finish	44 days	6/4/20	8/4/20																																				
38	Barge Landing near Mandeville Island	264 days	8/1/19	8/4/20																																				
39	Install piles (in-water work)	66 days	8/1/19	10/31/19																																				
40	Install support structure	88 days	11/1/19	3/3/20																																				
41	Cast barge deck	66 days	3/4/20	6/3/20																																				
42	Finish	44 days	6/4/20	8/4/20																																				
43	Barge Landing near Victoria Island	264 days	8/1/19	8/4/20																																				
44	Install piles (in-water work)	66 days	8/1/19	10/31/19																																				
45	Install support structure	88 days	11/1/19	3/3/20																																				
46	Cast barge deck	66 days	3/4/20	6/3/20																																				

Project: 20160705 Barge Landin
Date: 7/7/16

Task		Inactive Task		Manual Summary Rollup		External Milestone	
Split		Inactive Milestone		Manual Summary		Deadline	
Milestone		Inactive Summary		Start-only		Progress	
Summary		Manual Task		Finish-only		Manual Progress	
Project Summary		Duration-only		External Tasks			

Barge Landings Construction Schedule

ID	ID	Task Name	Duration	Start	Finish	2018												2019												2020											
						Jan	Feb	Mar	Apr	May	Jun	Jul	Aug	Sep	Oct	Nov	Dec	Jan	Feb	Mar	Apr	May	Jun	Jul	Aug	Sep	Oct	Nov	Dec	Jan	Feb	Mar	Apr	May	Jun	Jul	Aug	Sep	Oct	Nov	Dec
47	47	Finish	44 days	6/4/20	8/4/20																																				



Project: 20160705 Barge Landin Date: 7/7/16	Task		Inactive Task		Manual Summary Rollup		External Milestone	
	Split		Inactive Milestone		Manual Summary		Deadline	
	Milestone		Inactive Summary		Start-only		Progress	
	Summary		Manual Task		Finish-only		Manual Progress	
	Project Summary		Duration-only		External Tasks			