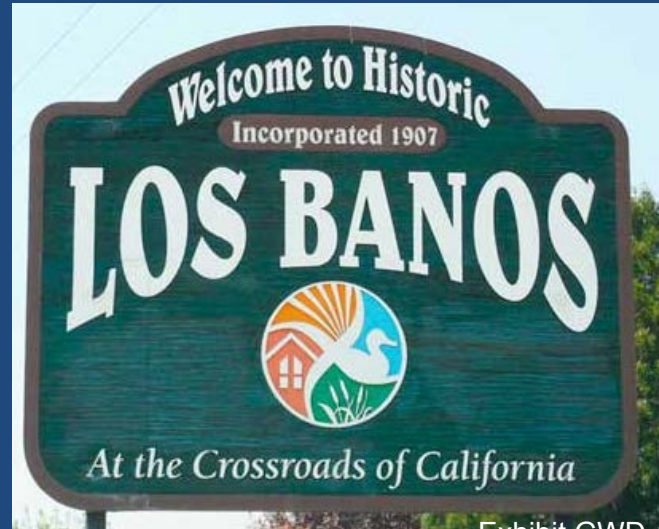


# Ricardo Ortega

General Manager, Grassland Water District



“The Refuge Water Supply issue has been long-standing and is of significant importance to refuge managers and the public, as the quality and quantity of water available to each refuge ultimately determines the desirability of habitat for migratory birds and resident wildlife. The degree to which these wetland areas are successfully managed is of biological, hydrological, economical, recreational, and educational importance to the state of California, as well as other states and countries along the Pacific Flyway.”

— U.S. Bureau of Reclamation

Video link:

<https://www.youtube.com/watch?v=Z930diAlkxc>

# CVPIA Refuge Water Supply Program



- U.S. Bureau of Reclamation
  - Cal. Dept. of Fish & Wildlife
  - Grassland Water District
  - Central Valley Joint Venture
- 
- 240,000 acre-feet of CVP refuge water (“Level 2”) delivered from the Delta

# Recreational and Economic Benefits



- Visitor use increasing
- Hunting, auto tours, photography, walking trails, interpretive facilities, visitor centers, environmental education



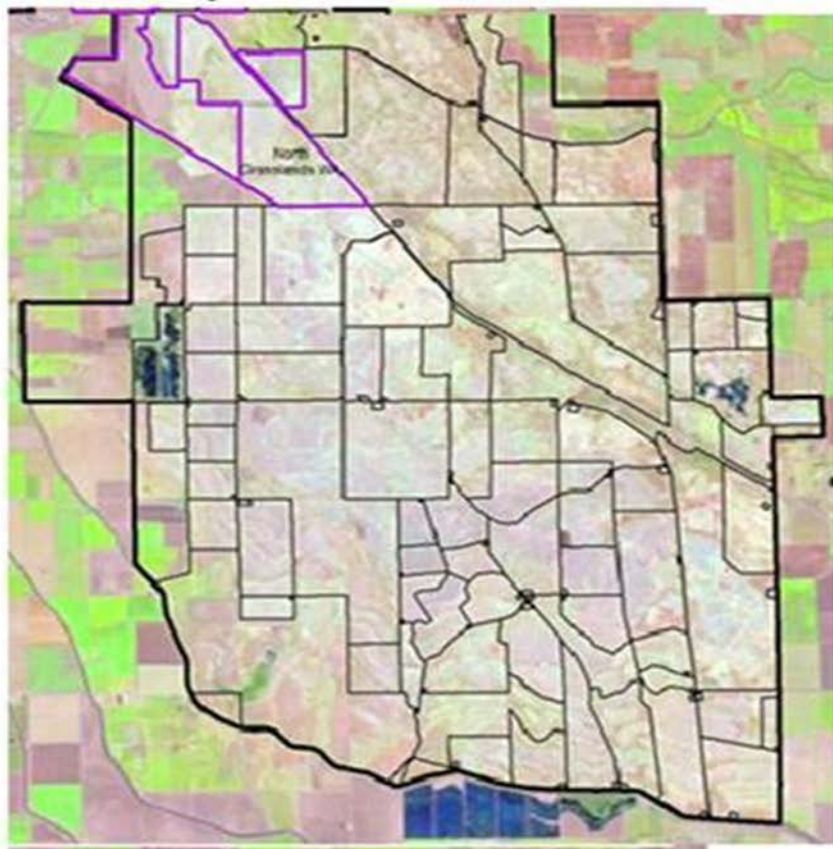
- Grasslands Ecological Area contributes approximately \$57 million annually to the local economy

# Reclamation's "Participation Letter"

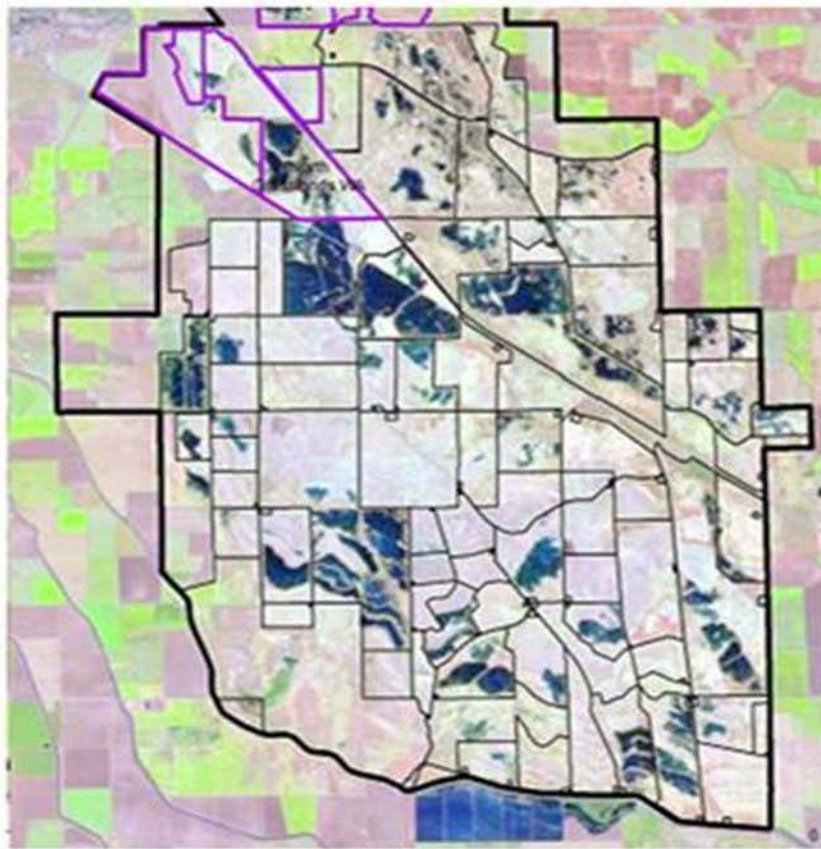
- Deviates from WaterFix project as proposed
- Anticipates future mitigation for adverse water supply impacts
- Not binding; no details on how CVPIA refuge water priority will be maintained

# Effect of Delayed Refuge Water Delivery Schedule South Grassland Resource Conservation District

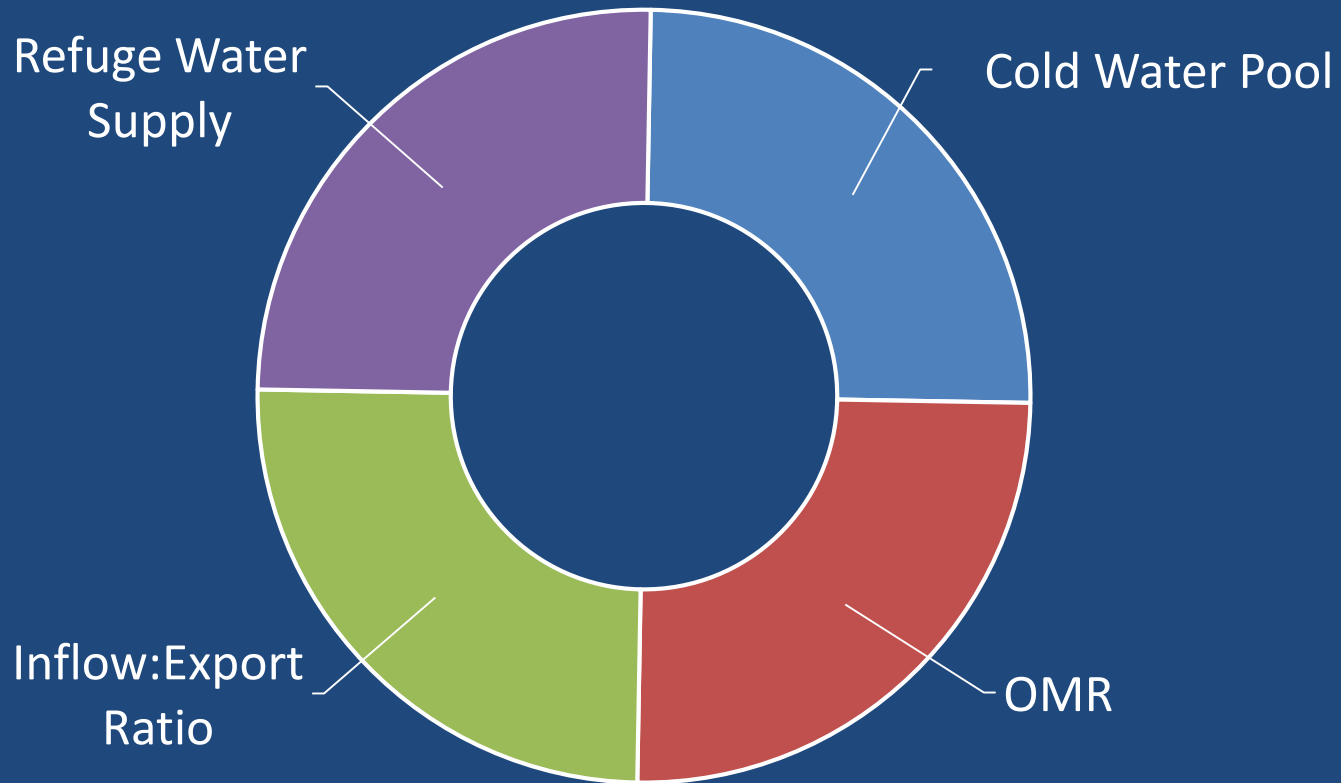
**September 19, 2014**



**October 5, 2014**



# Balancing Environmental Obligations





# Funding for Refuge Water Conveyance



- Level 2 refuge water deliveries are “reimbursable” by CVP contractors
- Mitigation and Restoration Payments → CVPIA Restoration Fund

# Refuge Water Storage Priority



- Refuges reschedule water from winter into spring to supply a deficit in acquired Incremental Level 4 water
- Rescheduling priority is lower than agricultural irrigation water