



Hidden Lakes Estates  
 Gina Lane Park water meter (lake fill and landscape irrigation)  
 San Juan Water District bills

2/15/2007

Bill Date	Meter Read Date	Previous Read Date	Days	Meter Reading	Meter Change	(billed)		Gallons Used *	Gallons Per Day	Consumption Charge
						Units Used	Units			
	12/31/1998		####	5227	0	0	0	0	0	
	1/31/1999	12/31/1998	31	5308	81	81	60,588	1,954		
	2/28/1999	1/31/1999	28	5308	0	0	0	0		
	3/31/1999	2/28/1999	31	5331	23	23	17,204	555		
	4/30/1999	3/31/1999	30	5508	177	177	132,396	4,413		
	5/31/1999	4/30/1999	31	6126	618	618	462,264	14,912		
	6/30/1999	5/31/1999	30	7329	1203	1203	899,844	29,995		
	7/27/1999	6/30/1999	27	8416	1087	1087	813,076	30,114		
	8/31/1999	7/27/1999	35	9687	1271	1271	950,708	27,163		
	9/28/1999	8/31/1999	28	795	1108	1108	828,784	29,599		
	10/27/1999	9/28/1999	29	1870	1075	1075	804,100	27,728		
	11/14/1999	10/27/1999	18	2032	162	162	121,176	6,732		
	12/14/1999	11/14/1999	30	2038	6	6	4,488	150		
	1/26/2000	12/14/1999	43	2163	125	125	93,500	2,174		
	2/23/2000	1/26/2000	28	2164	1	1	748	27		
	3/28/2000	2/23/2000	34	2169	5	5	3,740	110		
	4/25/2000	3/28/2000	28	2647	478	478	357,544	12,769		
	5/24/2000	4/25/2000	29	3236	589	589	440,572	15,192		
	6/26/2000	5/24/2000	33	4248	1012	1012	756,976	22,939		
	7/25/2000	6/26/2000	29	5702	1454	1454	1,087,592	37,503		
	8/25/2000	7/25/2000	31	7176	1474	1474	1,102,552	35,566		
	9/25/2000	8/25/2000	31	8118	942	942	704,616	22,730		
	10/24/2000	9/25/2000	29	8830	712	712	532,576	18,365		
	11/22/2000	10/24/2000	29	8879	49	49	36,652	1,264		
	12/19/2000	11/22/2000	27	8879	0	0	0	0		
	1/22/2001	12/19/2000	34	9172	293	293	219,164	6,446		
	2/20/2001	1/22/2001	29	9192	20	20	14,960	516		
	3/26/2001	2/20/2001	34	9203	11	11	8,228	242		
	4/24/2001	3/26/2001	29	9431	228	228	170,544	5,881		
	5/31/2001	4/24/2001	37	818	1387	1387	1,037,476	28,040		
	6/20/2001	5/31/2001	20	1386	568	568	424,864	21,243		
	7/16/2001	6/20/2001	26	2693	1307	1307	977,636	37,601		
	8/22/2001	7/16/2001	37	4051	1358	1358	1,015,784	27,454		
	9/19/2001	8/22/2001	28	5170	1119	1119	837,012	29,893		
	10/24/2001	9/19/2001	35	6403	1233	1233	922,284	26,351		
	11/26/2001	10/24/2001	33	6853	450	450	336,600	10,200		
	2/27/2002	11/26/2001	93	6853	0	0	0	0		
	4/15/2002	2/27/2002	47	7330	477	477	356,796	7,591		
	5/31/2002	4/15/2002	46	7964	634	634	474,232	10,309		
	8/15/2002	5/31/2002	76	2409	4445	4445	3,324,860	43,748		
	9/25/2002	8/15/2002	41	4288	1879	1879	1,405,492	34,280		
	11/27/2002	9/25/2002	63	5407	1119	1119	837,012	13,286		
3/5/2003	2/28/2003	11/27/2002	93	5632	225	225	168,300	1,810		\$76.50
5/7/2003	4/15/2003	2/28/2003	46	6028	396	396	296,208	6,439		\$134.64
7/2/2003	6/4/2003	4/15/2003	50	7040	1012	1012	756,976	15,140		\$344.08
9/3/2003	8/8/2003	6/4/2003	65	9516	2476	2476	1,852,048	28,493		\$841.84
11/5/2003	10/9/2003	8/8/2003	62	1241	1725	1725	1,290,300	20,811		\$628.78
1/7/2004	12/4/2003	10/9/2003	56	2410	1169	1169	874,412	15,615		\$444.22
3/3/2004	2/5/2004	12/4/2003	63	2414	4	4	2,992	47		\$1.52
5/5/2004	4/8/2004	2/5/2004	63	2723	309	309	231,132	3,669		\$117.42
7/7/2004	6/10/2004	4/8/2004	63	4724	2001	2001	1,496,748	23,758		\$760.38
9/1/2004	8/11/2004	6/10/2004	62	7389	2665	2665	1,993,420	32,152		\$1,012.70
11/3/2004	10/14/2004	8/11/2004	64	9800	2411	2411	1,803,428	28,179		\$932.28
1/5/2005	12/13/2004	10/14/2004	60	9936	136	136	101,728	1,695		\$53.04
3/2/2005	2/9/2005	12/13/2004	58	9936	0	0	0	0		\$0.00
5/4/2005	4/12/2005	2/9/2005	62	9967	31	31	23,188	374		\$12.09
7/6/2005	6/10/2005	4/12/2005	59	1112	1145	1145	856,460	14,516		\$446.55
9/7/2005	8/9/2005	6/10/2005	60	3425	2313	2313	1,730,124	28,835		\$902.07
11/2/2005	10/7/2005	8/9/2005	59	5664	2239	2239	1,674,772	28,386		\$886.87
1/4/2006	12/8/2005	10/7/2005	62	6500	836	836	625,328	10,086		\$334.40
3/1/2006	2/7/2006	12/8/2005	61	6500	0	0	0	0		\$0.00
5/3/2006	4/7/2006	2/7/2006	59	6500	0	0	0	0		\$0.00
7/5/2006	6/6/2006	4/7/2006	60	7124	624	624	466,752	7,779		\$249.60
9/6/2006	8/7/2006	6/6/2006	62	9635	2511	2511	1,878,228	30,294		\$1,004.40
11/1/2006	10/6/2006	8/7/2006	60	1934	2299	2299	1,719,652	28,661		\$919.60
1/3/2007	12/7/2006	10/6/2006	62	2506	572	572	427,856	6,901		\$228.80
	2/8/2007	12/7/2006	63	3009	503	503	376,244	5,972		

* 1 unit = 100 cubic feet = 748 gallons	Acre	Sq feet	Acre-feet	Cubic feet	Gallons
	1	43,560	1	43,560	325,900

Spring/summer/fall water usage varies from 0 gallons/day to an average high of 43,748 gallons/day.

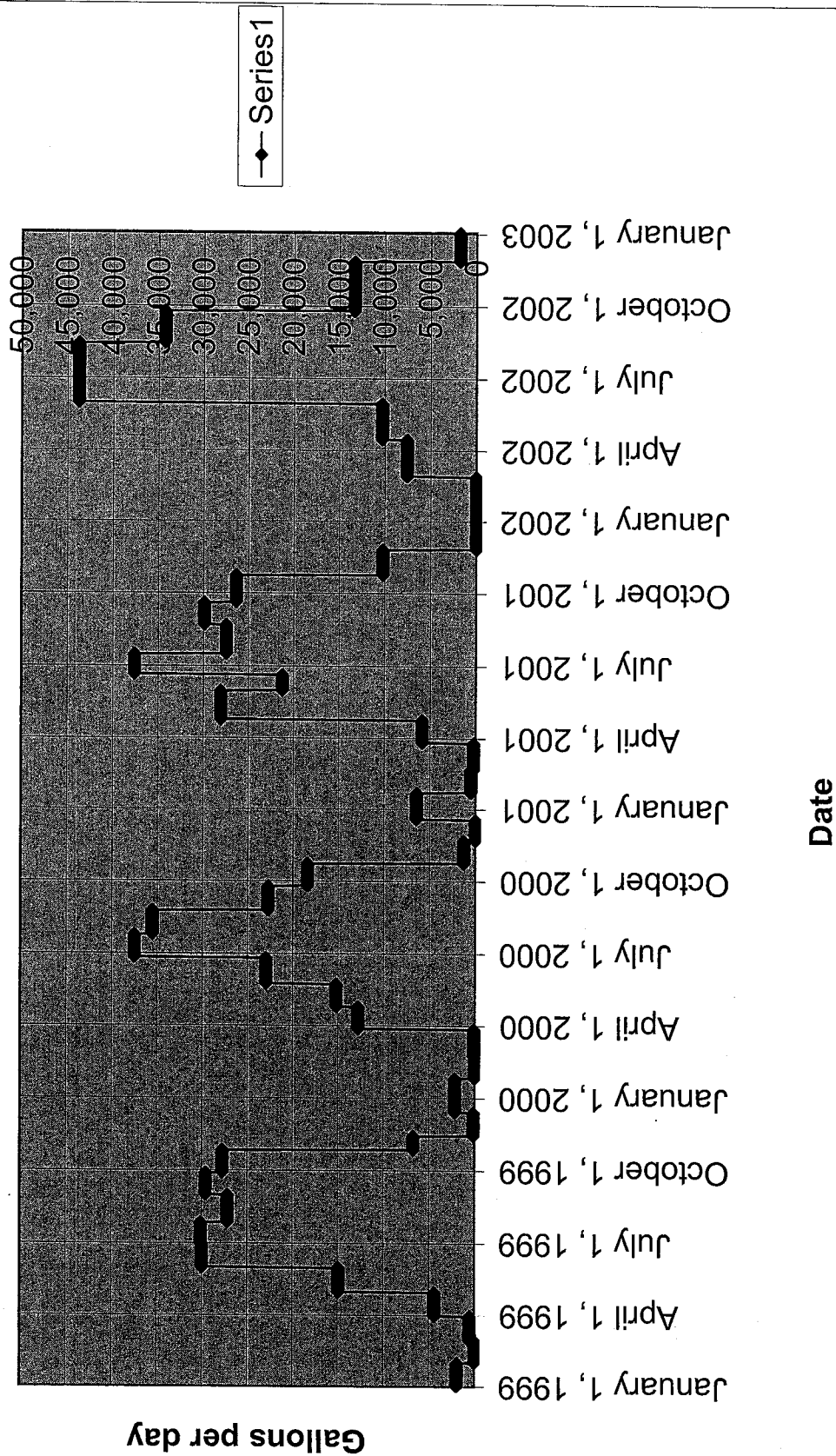
	Gallons	Cubic feet	Acre-feet
Per Day*	43,748	5,849	0.1
Per Month*	1,312,445	175,461	4.0
Per Year*	15,749,337	2,105,526	48.3

**\*If the average high daily water usage was constant throughout every day of the year**

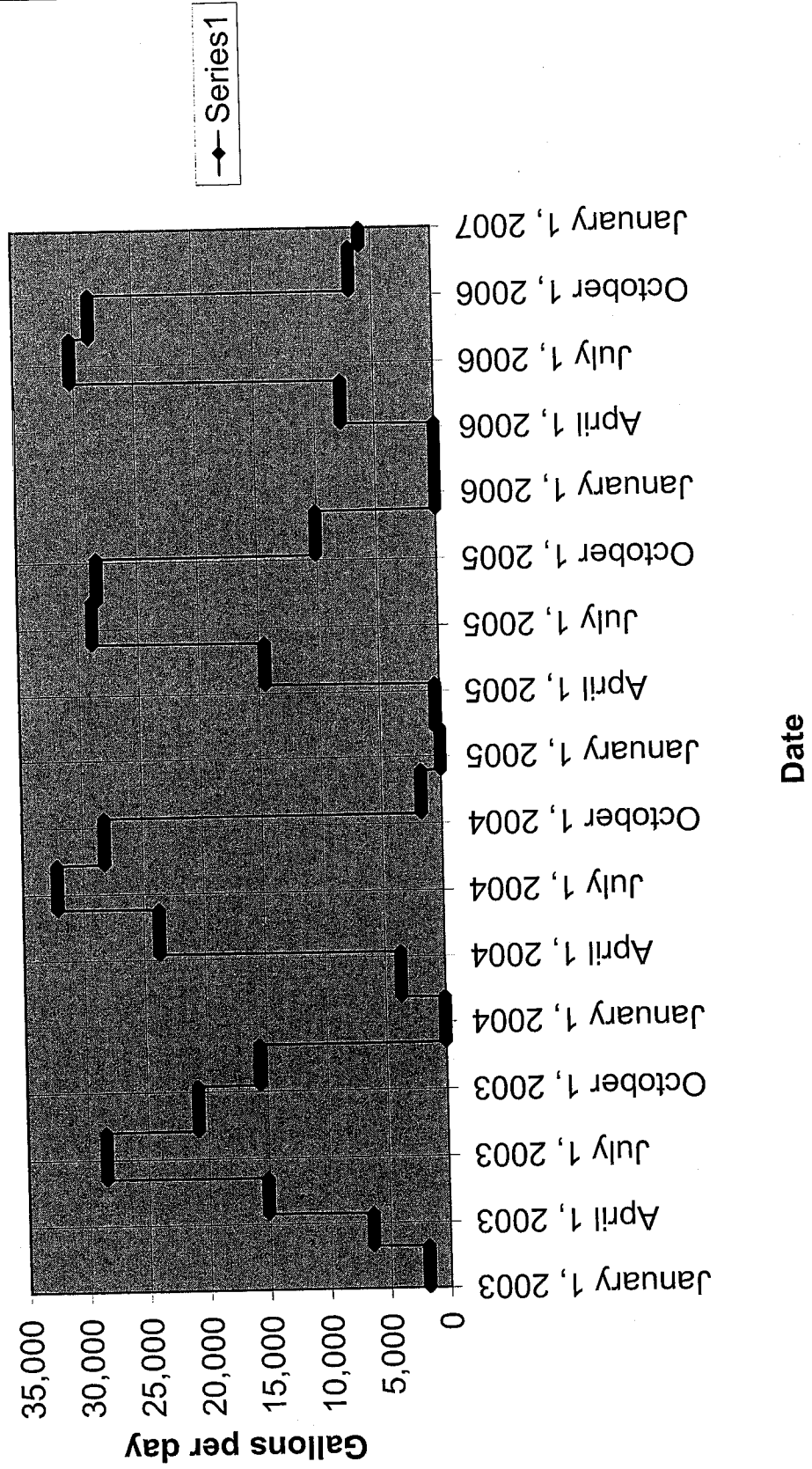
Actual yearly water usage for lawn sprinklers and lake water make-up.

	Gallons	Cubic feet	Acre-feet
1999	5,120,086	684,504	15.7
2000	5,161,726	690,070	15.8
2001	5,880,754	786,197	18.0
2002	6,461,731	863,868	19.8
2003	5,176,235	692,010	15.9
2004	5,628,118	752,422	17.3
2005	4,909,872	656,400	15.1
2006	4,641,791	620,560	14.2

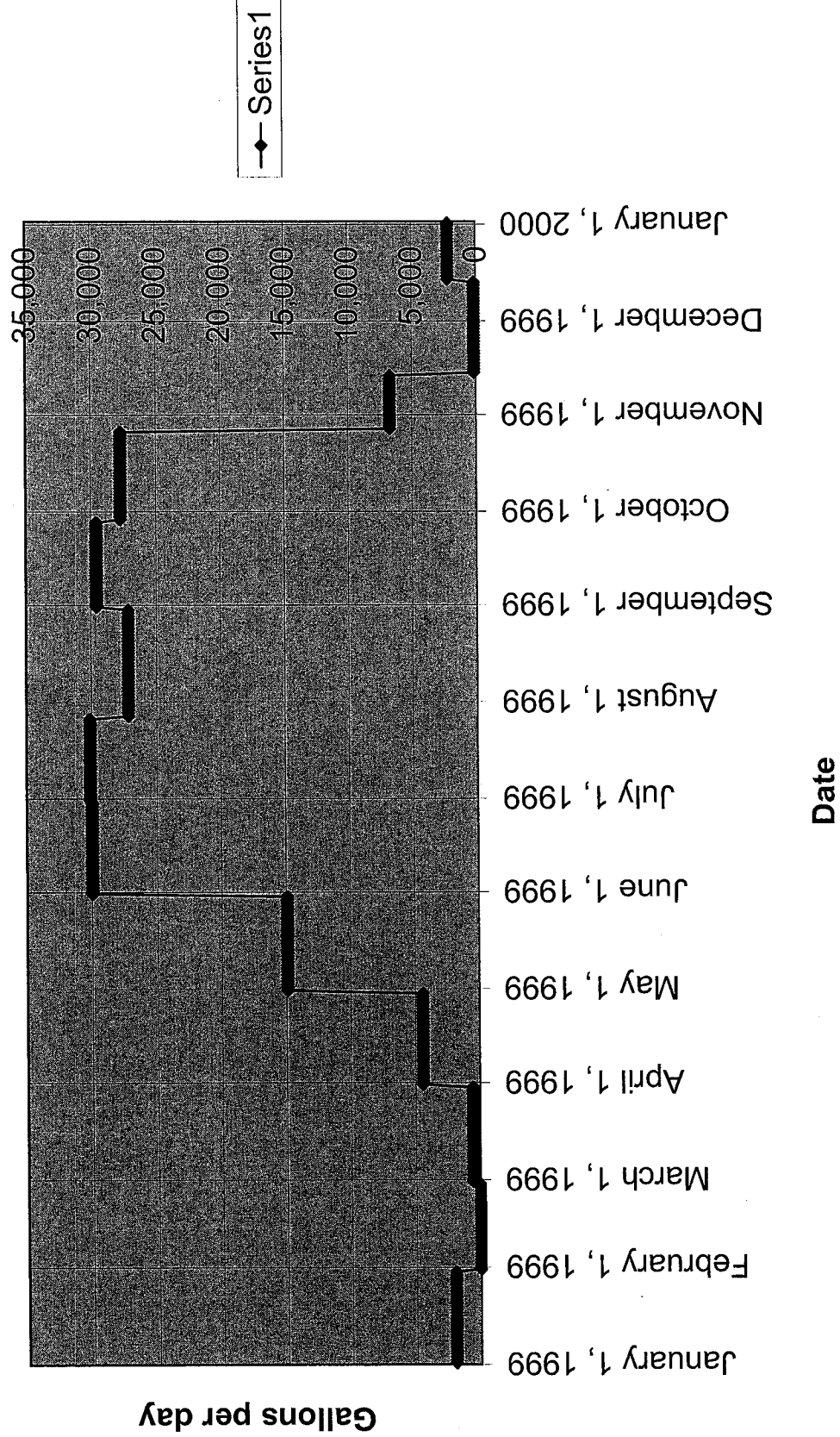
# Average Daily Water Usage 1999-2002



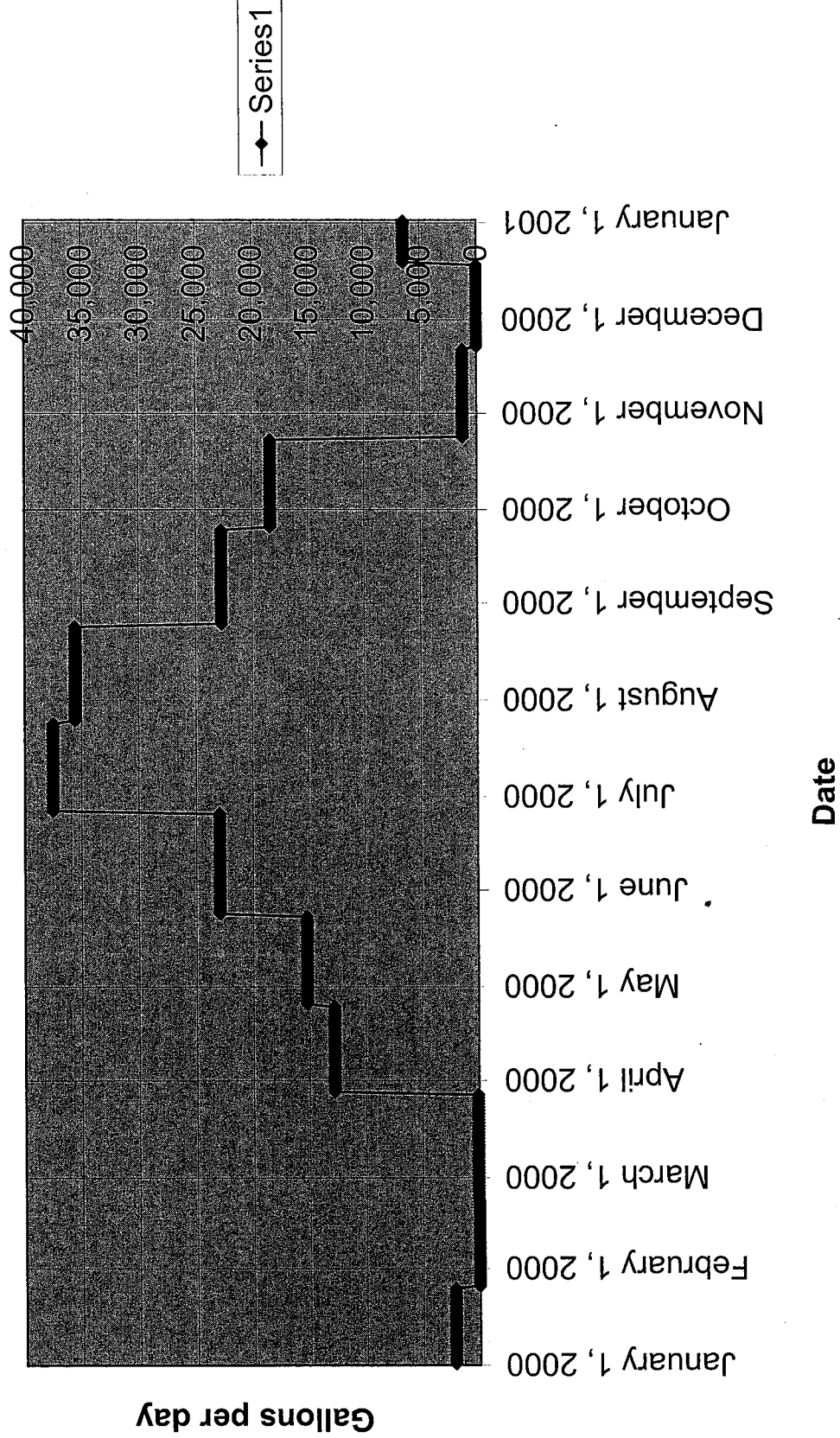
# Average Daily Water Usage 2003-2006



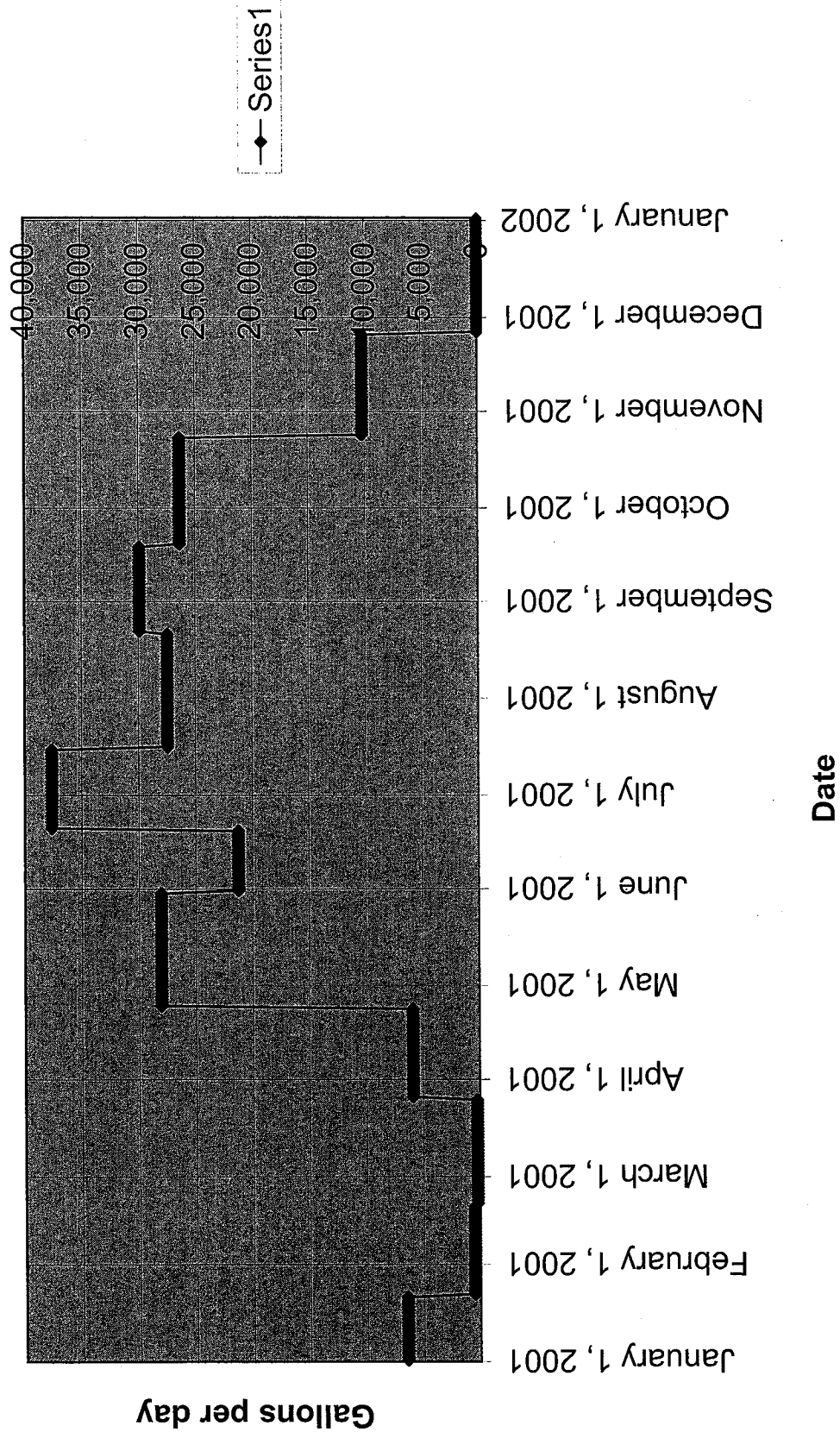
# Average Daily Water Usage 1999



# Average Daily Water Usage 2000

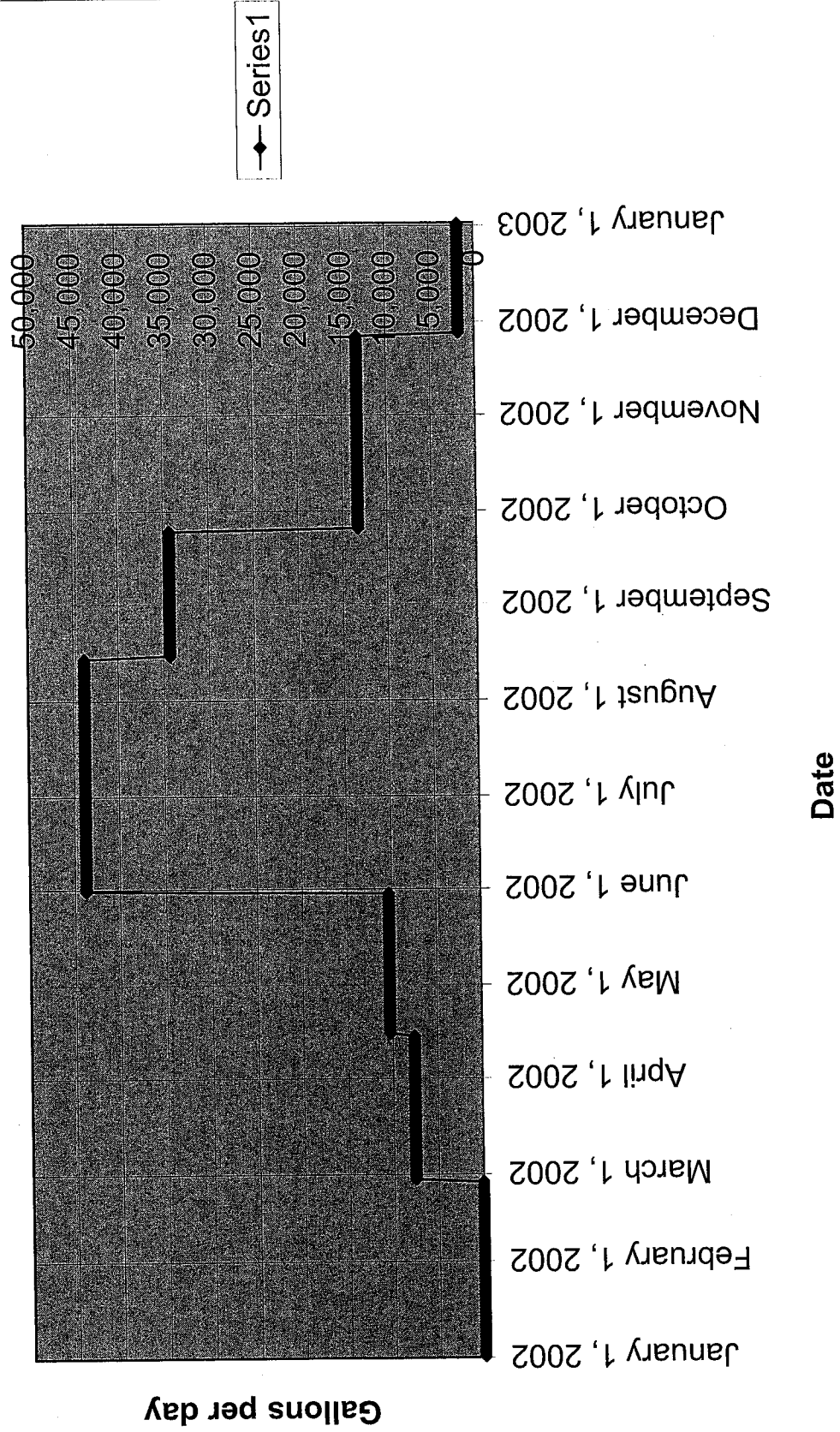


# Average Daily Water Usage 2001

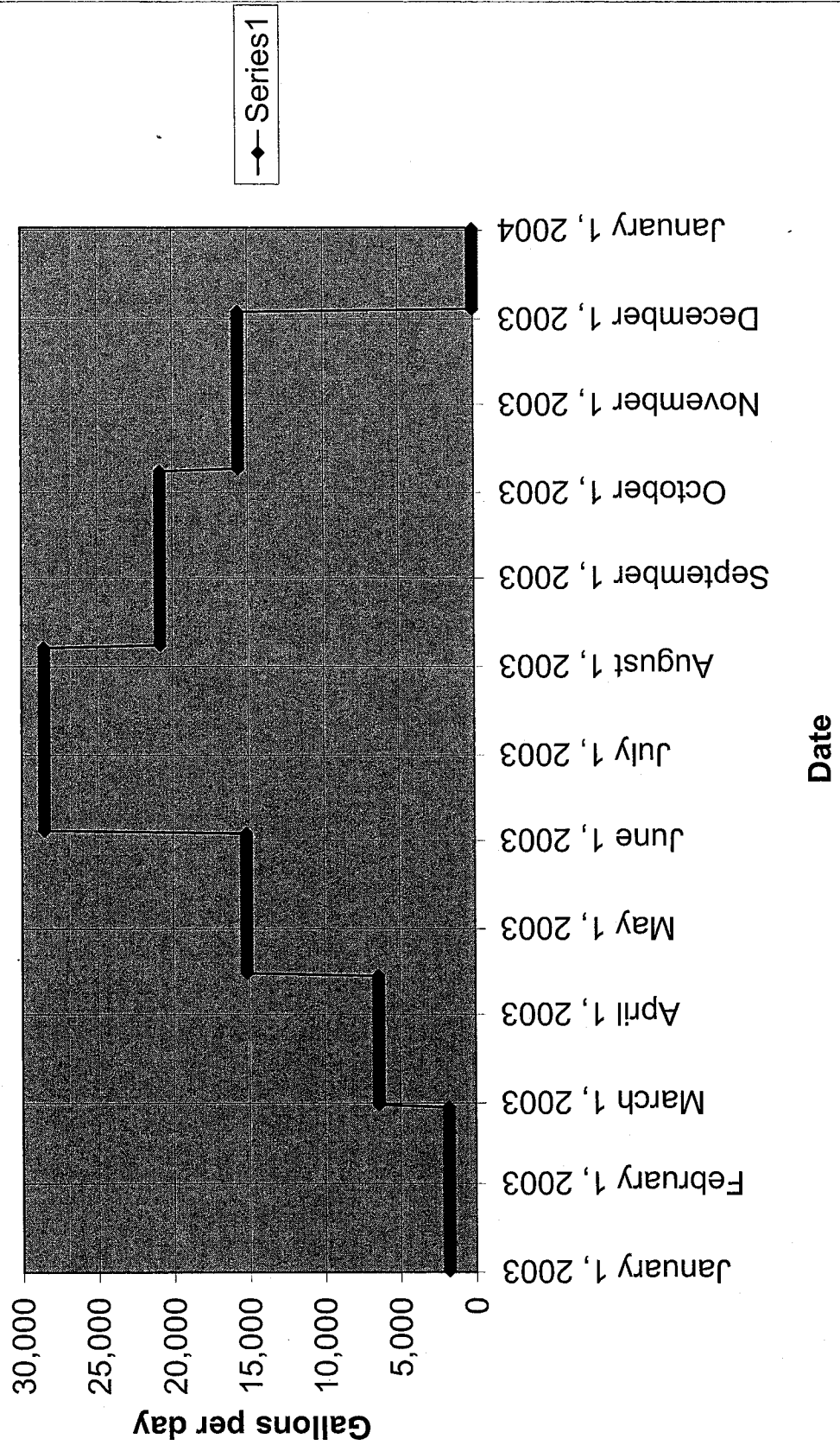




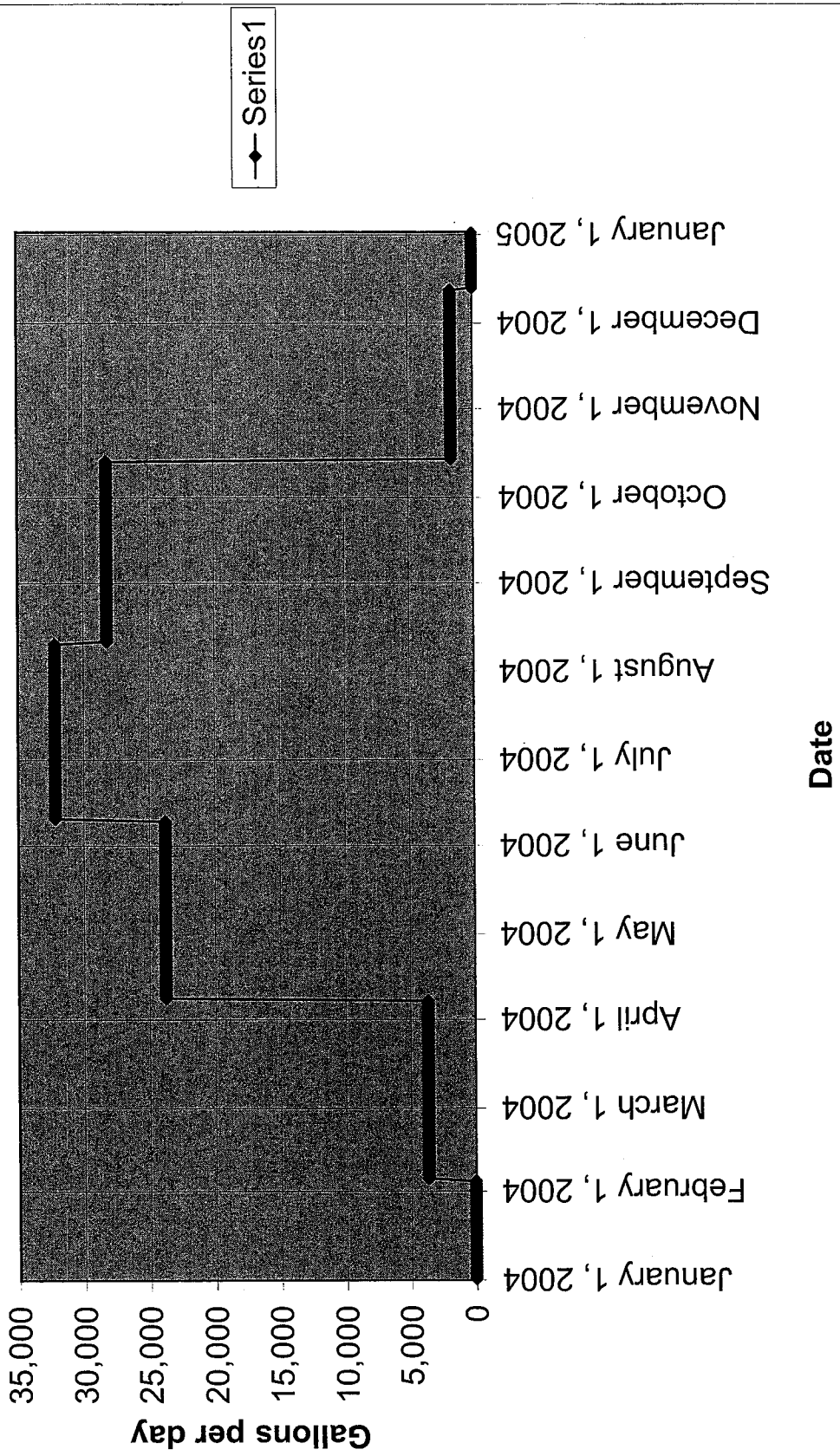
# Average Daily Water Usage 2002



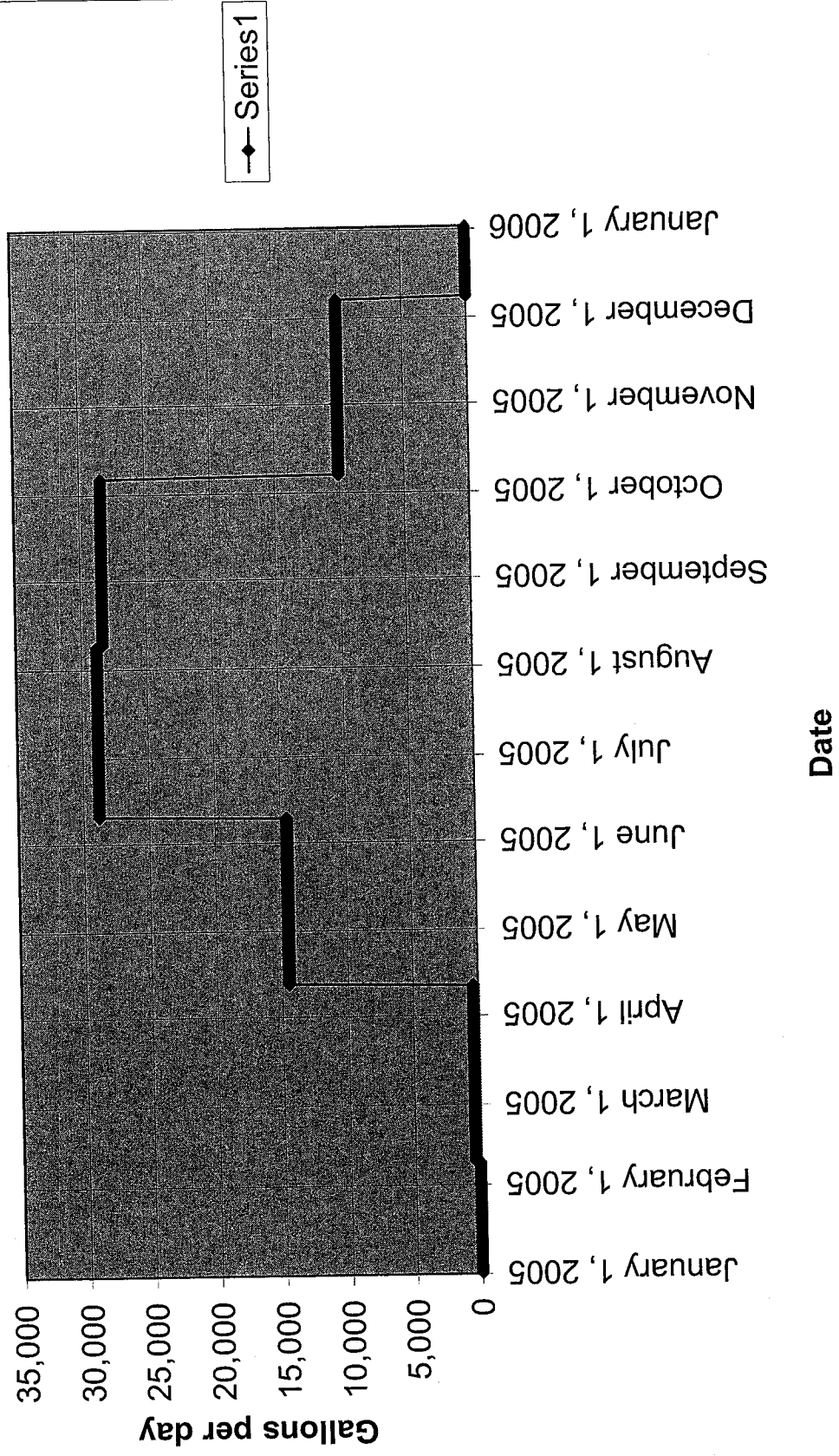
# Average Daily Water Usage 2003



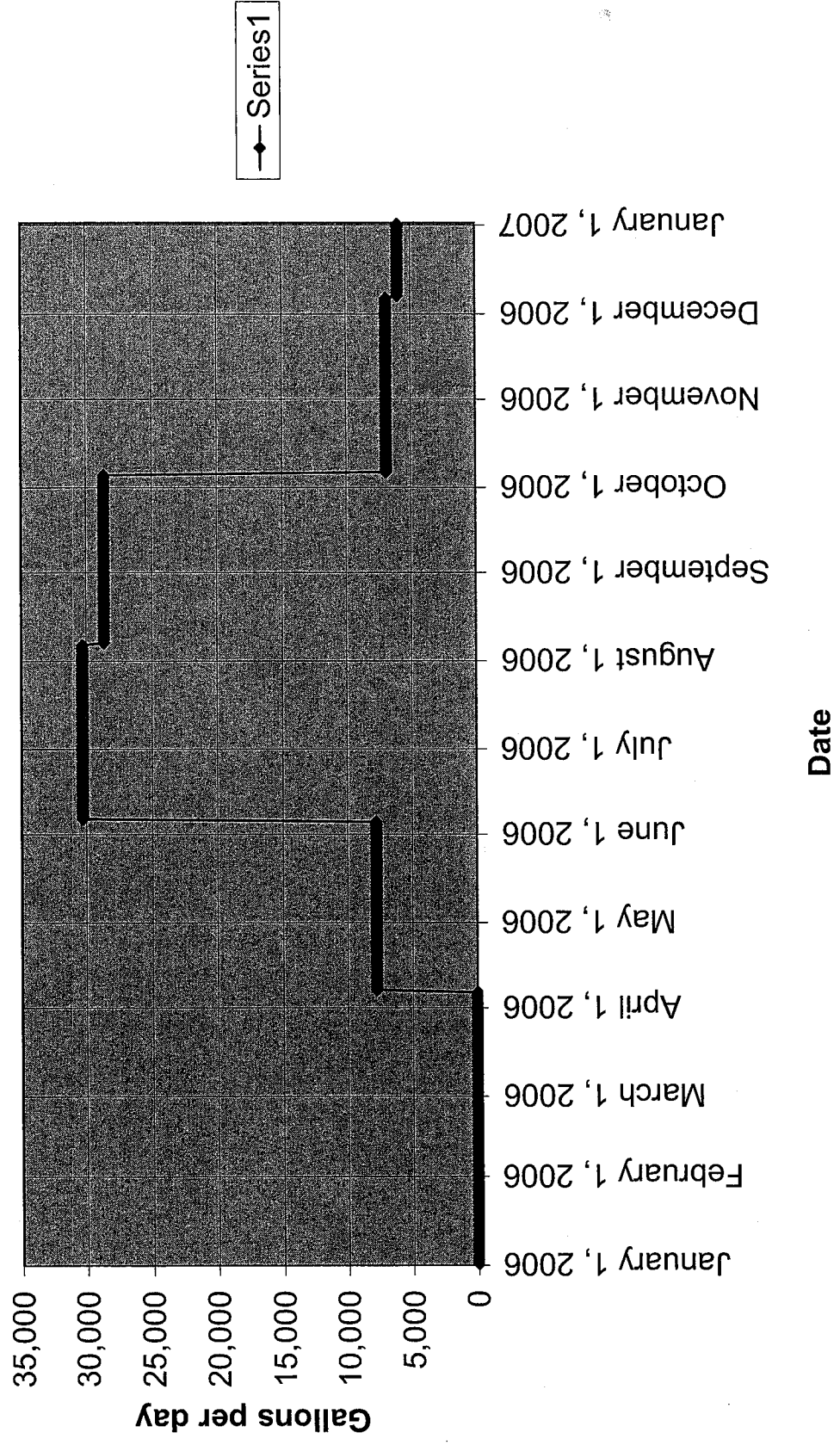
# Average Daily Water Usage 2004



# Average Daily Water Usage 2005



# Average Daily Water Usage 2006



Created Date/Time: 02/09/2007 12:34:36 PM  
 Customer Number: 0001132  
 Account Number: 77000067  
 Service Address: HIDDEN LAKES ESTATES-LAKE  
 Mailing Address:  
 HIDDEN LAKES ESTATES  
 FREI REAL ESTATE SERVICES  
 8340 AUBURN BLVD #100  
 CITRUS HEIGHTS, CA 95610

Service	Read Date	Meter #	Previous	Current	Days Billed	Usage	Average
Water	12/7/2006 0:00	36975857	1934	2506	62	572	9.23
Water	10/6/2006 0:00	36975857	9635	1934	60	2299	38.32
Water	8/7/2006 0:00	36975857	7124	9635	62	2511	40.5
Water	6/6/2006 0:00	36975857	6500	7124	60	624	10.4
Water	4/7/2006 0:00	36975857	6500	6500	59	0	0
Water	2/7/2006 0:00	36975857	6500	6500	61	0	0
Water	12/8/2005 0:00	36975857	5664	6500	62	836	13.48
Water	10/7/2005 0:00	36975857	3425	5664	59	2239	37.95
Water	8/9/2005 0:00	36975857	1112	3425	60	2313	38.55
Water	6/10/2005 0:00	36975857	9967	1112	59	1145	19.41
Water	4/12/2005 0:00	36975857	9936	9967	62	31	0.5
Water	2/9/2005 0:00	36975857	9936	9936	58	0	0
Water	12/13/2004 0:00	36975857	9800	9936	60	136	2.27
Water	10/14/2004 0:00	36975857	7389	9800	64	2411	37.67
Water	8/11/2004 0:00	36975857	4724	7389	62	2665	42.98
Water	6/10/2004 0:00	36975857	2723	4724	63	2001	31.76
Water	4/8/2004 0:00	36975857	2414	2723	63	309	4.9
Water	2/5/2004 0:00	36975857	2410	2414	63	4	0.06
Water	12/4/2003 0:00	36975857	1241	2410	56	1169	20.88
Water	10/9/2003 0:00	36975857	9516	1241	62	1725	27.82
Water	8/8/2003 0:00	36975857	7040	9516	65	2476	38.09
Water	6/4/2003 0:00	36975857	6028	7040	50	1012	20.24
Water	4/15/2003 0:00	36975857	5632	6028	46	396	8.61
Water	2/28/2003 0:00	36975857	5407	5632	93	225	2.42
Water	11/27/2002 0:00	36975857	4288	5407	57	1119	19.63
Water	9/25/2002 0:00	36975857	2409	4288	47	1879	39.98
Water	8/15/2002 0:00	36975857	7964	2409	76	4445	58.49
Water	5/31/2002 0:00	36975857	7330	7964	46	634	13.78
Water	4/15/2002 0:00	36975857	6853	7330	47	477	10.15
Water	2/27/2002 0:00	36975857	6853	6853	93	0	0
Water	11/26/2001 0:00	36975857	6403	6853	33	450	13.64
Water	10/24/2001 0:00	36975857	5170	6403	35	1233	35.23
Water	9/19/2001 0:00	36975857	4051	5170	28	1119	39.96
Water	8/22/2001 0:00	36975857	2693	4051	37	1358	36.7
Water	7/16/2001 0:00	36975857	1386	2693	26	1307	50.27
Water	6/20/2001 0:00	36975857	818	1386	20	568	28.4

Water	5/31/2001 0:00 36975857	9431	818	37	1387	37.49
Water	4/24/2001 0:00 36975857	9203	9431	29	228	7.86
Water	3/26/2001 0:00 36975857	9192	9203	34	11	0.32
Water	2/20/2001 0:00 36975857	9172	9192	29	20	0.69
Water	1/22/2001 0:00 36975857	8879	9172	34	293	8.62
Water	12/19/2000 0:00 36975857	8879	8879	27	0	0
Water	11/22/2000 0:00 36975857	8830	8879	29	49	1.69
Water	10/24/2000 0:00 36975857	8118	8830	29	712	24.55
Water	9/25/2000 0:00 36975857	7176	8118	31	942	30.39
Water	8/25/2000 0:00 36975857	5702	7176	31	1474	47.55
Water	7/25/2000 0:00 36975857	4248	5702	29	1454	50.14
Water	6/26/2000 0:00 36975857	3236	4248	33	1012	30.67
Water	5/24/2000 0:00 36975857	2647	3236	29	589	20.31
Water	4/25/2000 0:00 36975857	2169	2647	28	478	17.07
Water	3/28/2000 0:00 36975857	2164	2169	34	5	0.15
Water	2/23/2000 0:00 36975857	2163	2164	28	1	0.04
Water	1/26/2000 0:00 36975857	2038	2163	43	125	2.91
Water	12/14/1999 0:00 36975857	2032	2038	30	6	0.2
Water	11/14/1999 0:00 36975857	1870	2032	18	162	9
Water	10/27/1999 0:00 36975857	795	1870	29	1075	37.07
Water	9/28/1999 0:00 36975857	9687	795	28	1108	39.57
Water	8/31/1999 0:00 36975857	8416	9687	35	1271	36.31
Water	7/27/1999 0:00 36975857	7329	8416	27	1087	40.26
Water	6/30/1999 0:00 36975857	6126	7329	30	1203	40.1
Water	5/31/1999 0:00 36975857	5508	6126	31	618	19.94
Water	4/30/1999 0:00 36975857	5331	5508	30	177	5.9
Water	3/31/1999 0:00 36975857	5308	5331	31	23	0.74
Water	2/28/1999 0:00 36975857	5308	5308	28	0	0
Water	1/31/1999 0:00 36975857	5227	5308	31	81	2.61
Water	12/31/1998 0:00 36975857	5227	5227	0	0	0