

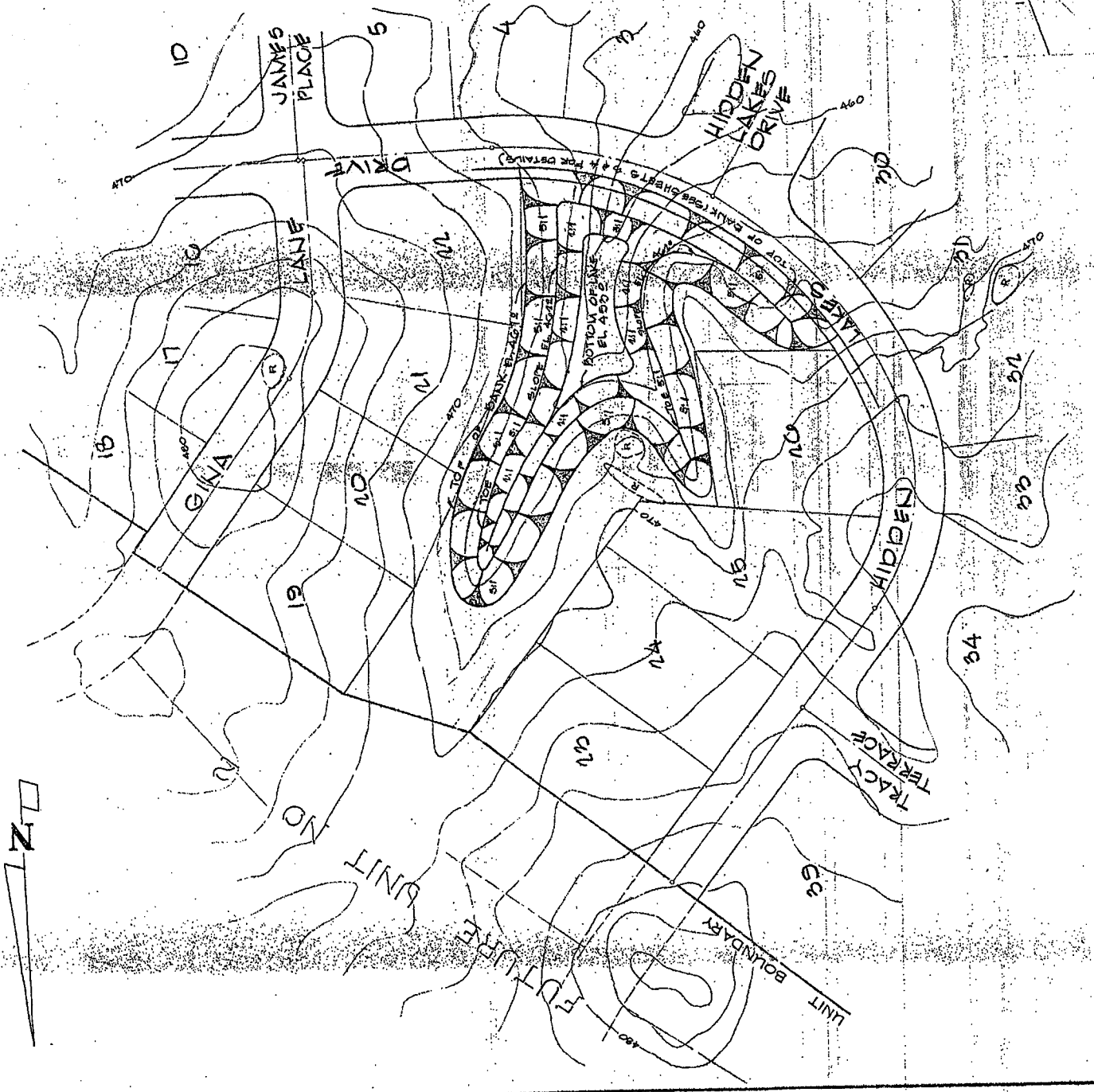
LAKE CONSTRUCTION NOTES:

DAM EMBANKMENT

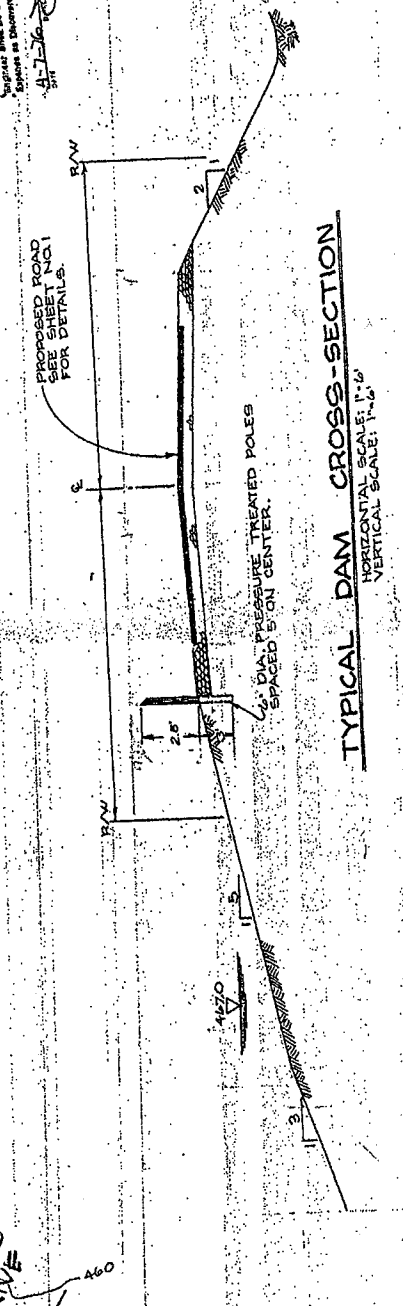
Remove all surface vegetation, stumps, and rocks from the base. After removal of organic material, the original ground below the proposed embankment shall be compacted to a depth of at least 6 inches. The base shall be compacted to at least 95% of the maximum dry density as determined by the Proctor Test Method B-1557-70. On-site tests shall be made to determine the actual moisture content and density of the embankment. All lifts shall be compacted to no less than 95 percent of the maximum dry density.

BENTONITE TREATMENT

The area to be treated with bentonite shall be all of the upstream slope and an apron 10' wide along the bottom of the reservoir at the toe of the upstream slope. The surface shall be relatively dry prior to spreading bentonite. The bentonite shall be spread uniformly at a rate of no less than one pound per square foot using a mechanical spreader. The bentonite shall be cultivated into the embankment by discing or cultivating. After cultivation, the surface shall be uniformly compacted to allow easier compaction.



Approved for the As-Built Documents
 Prepared and Drawn by J. Suddiqui
 Checked by J. Gev
 Submitted by J. Gev
 Date 1-20-77



TYPICAL DAM CROSS-SECTION
 HORIZONTAL SCALE 1" = 10'
 VERTICAL SCALE 1" = 10'



AS-BUILT
 1-20-77

IMPROVEMENT PLANS FOR
HIDDEN LAKES UNIT NO. 1
LAKE CONSTRUCTION & DETAILS
 PLACER COUNTY, CALIFORNIA

SCALE: HORIZONTAL 1" = 10' VERTICAL 1" = 10'
 DRAWN BY: G. MAHE
 DESIGNED BY: J. SUDDIQUI
 CHECKED BY: J. GEV
 SUBMITTED BY: J. GEV
 DATE: 1-20-77

G.W. CONSULTING ENGINEERS
 PLACER COUNTY, CALIFORNIA
 505 LAKESIDE DRIVE
 SACRAMENTO, CALIFORNIA 95833



REVISION BLK. (SEE SHEET NO. 1)

NO.	DATE	REVISION	BY
1			
2			
3			
4			
5			
6			
7			
8			
9			
10			