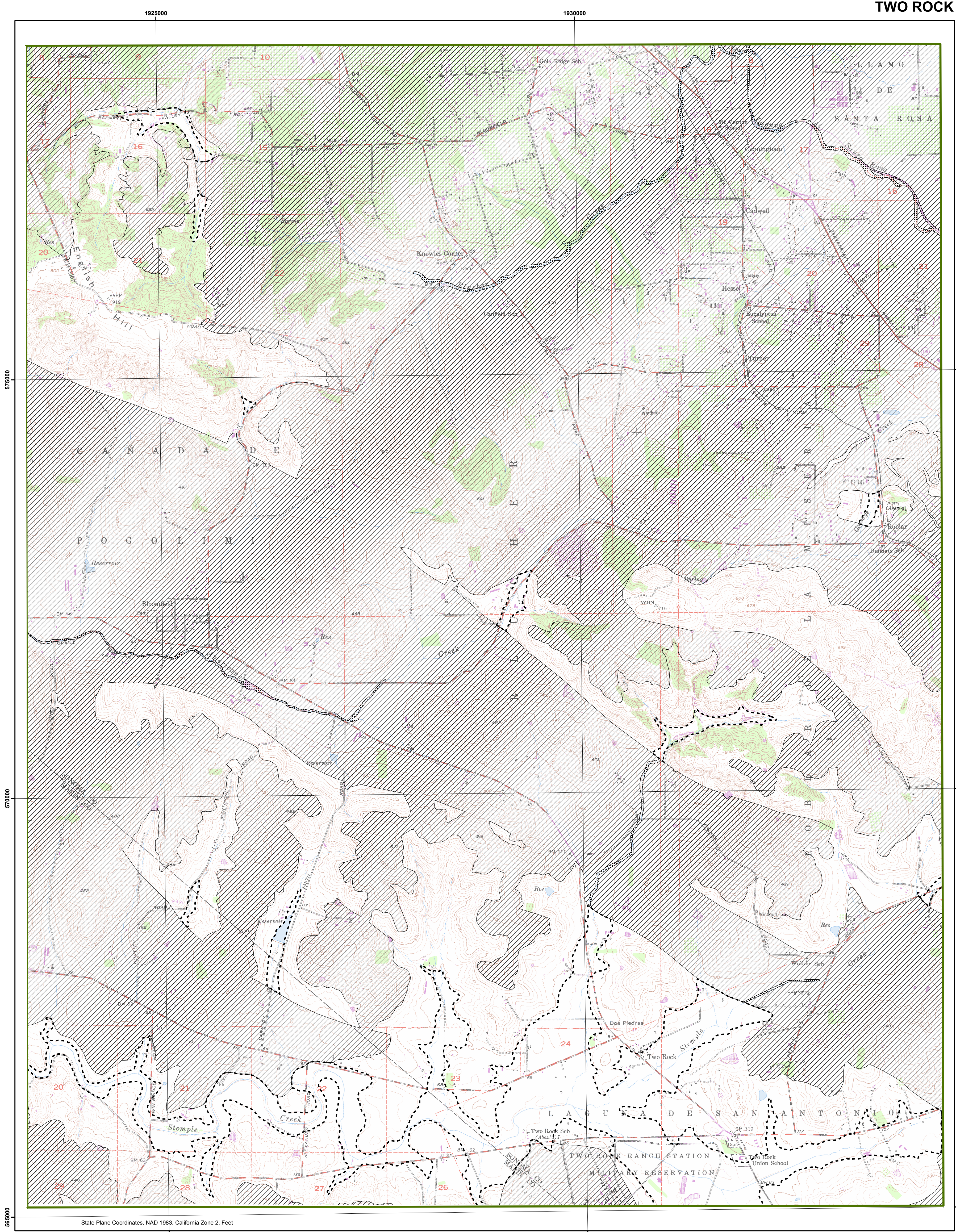

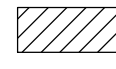
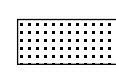


TWO ROCK



State Plane Coordinates, NAD 1983, California Zone 2, Feet

-  Subterranean Flow
-  Potential Stream Depletion Area
-  Mapped stream channel and associated alluvial deposits within a potential stream depletion area. Wells pumping from these deposits are likely to result in greater and more immediate stream depletion.

Note: Some of the delineated areas on this map do not match seamlessly with the delineated areas in adjoining quads because of differences in the geologic source maps that were used.

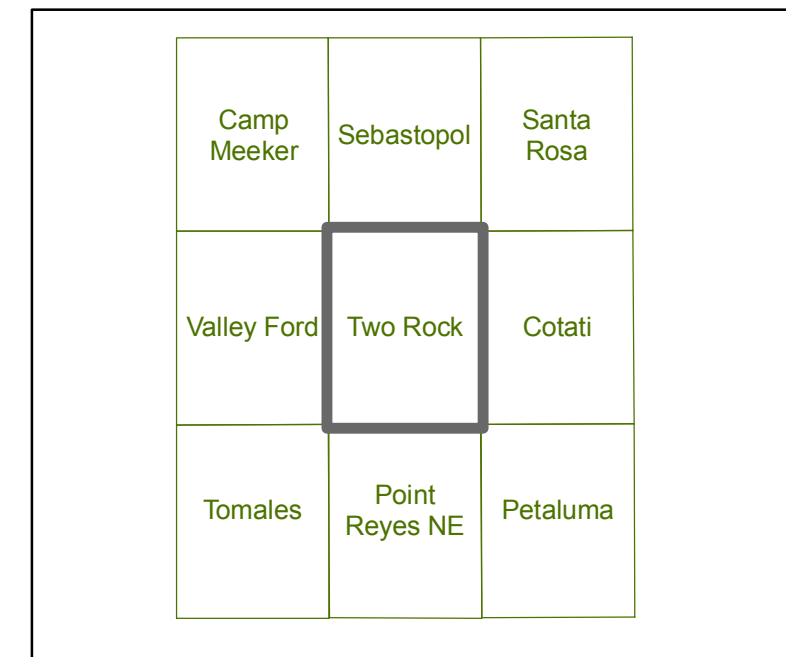
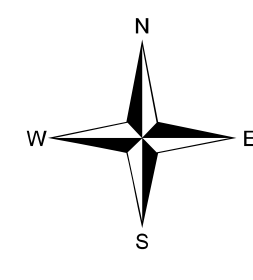
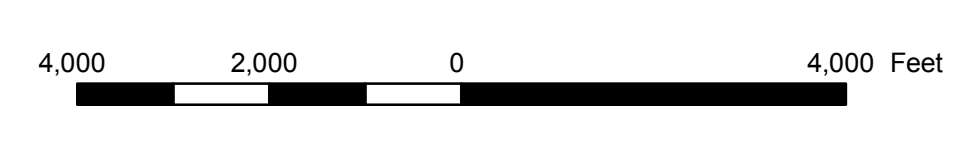
REFERENCE

Bezore, S.P., Koehler, R.D., and Witter, R.C., 2003, Geologic map of the Two Rock 7.5-minute quadrangle, Sonoma County, California; A digital database: California Geological Survey, Preliminary Geologic Maps, scale 1:24,000.

DELINEATION OF SUBTERRANEAN STREAMS AND POTENTIAL STREAM DEPLETION AREAS

TWO ROCK QUADRANGLE

FEBRUARY 22, 2008



INDEX TO USGS 7.5' QUADRANGLES

Note: Because the delineated areas on this map were based on information readily available at the time of its development, this map does not claim to represent all of the subterranean streams or potential stream depletion areas that exist in the area. Site specific investigations will be needed to verify the existence of subterranean streams or potential stream depletion areas.