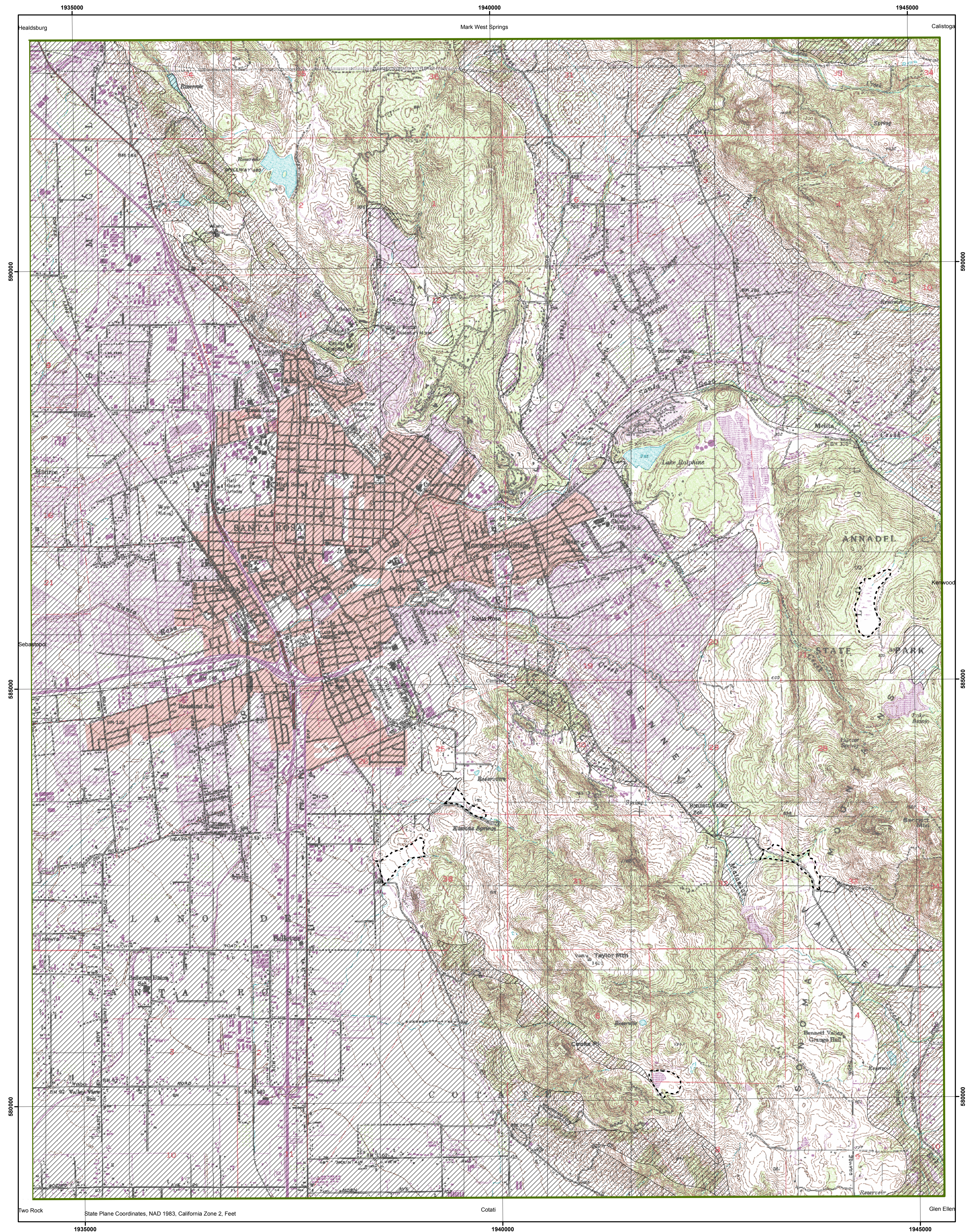

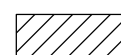
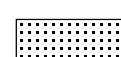


**SANTA ROSA**

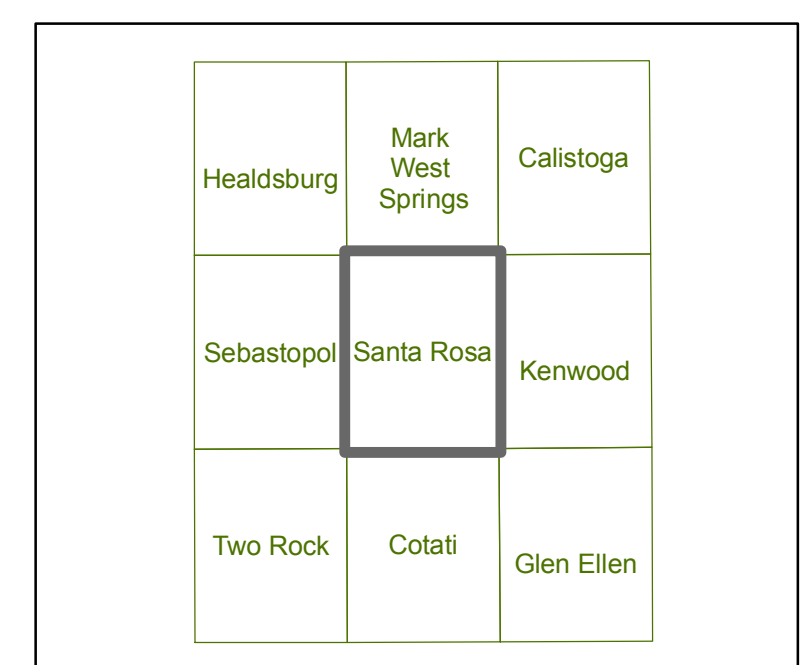
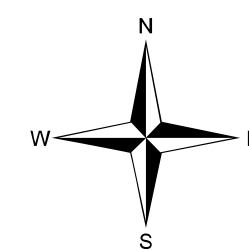
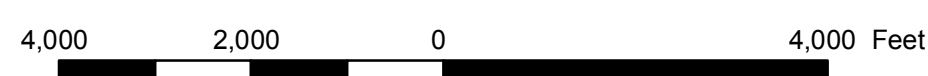


-  Subterranean Flow
-  Potential Stream Depletion Area
-  Mapped stream channel and associated alluvial deposits within a potential stream depletion area. Wells pumping from these deposits are likely to result in greater and more immediate stream depletion.

**DELINEATION OF SUBTERRANEAN STREAMS AND POTENTIAL STREAM DEPLETION AREAS**

**SANTA ROSA QUADRANGLE**

MARCH 9, 2008



INDEX TO USGS 7.5' QUADRANGLES

*Note: Some of the delineated areas on this map do not match seamlessly with the delineated areas in adjoining quads because of differences in the geologic source maps that were used.*

**REFERENCE**

Graymer, R.W., Brabb, E.E., Jones, D.L., Barnes, J., Nicholson, R.S., and Stamski, R.E., 2007, Geologic map and map database of eastern Sonoma and western Napa counties, California: U.S. Geological Survey, Scientific Investigations Map SIM-2956, scale 1:100,000.

*Note: Because the delineated areas on this map were based on information readily available at the time of its development, this map does not claim to represent all of the subterranean streams or potential stream depletion areas that exist in the area. Site specific investigations will be needed to verify the existence of subterranean streams or potential stream depletion areas.*