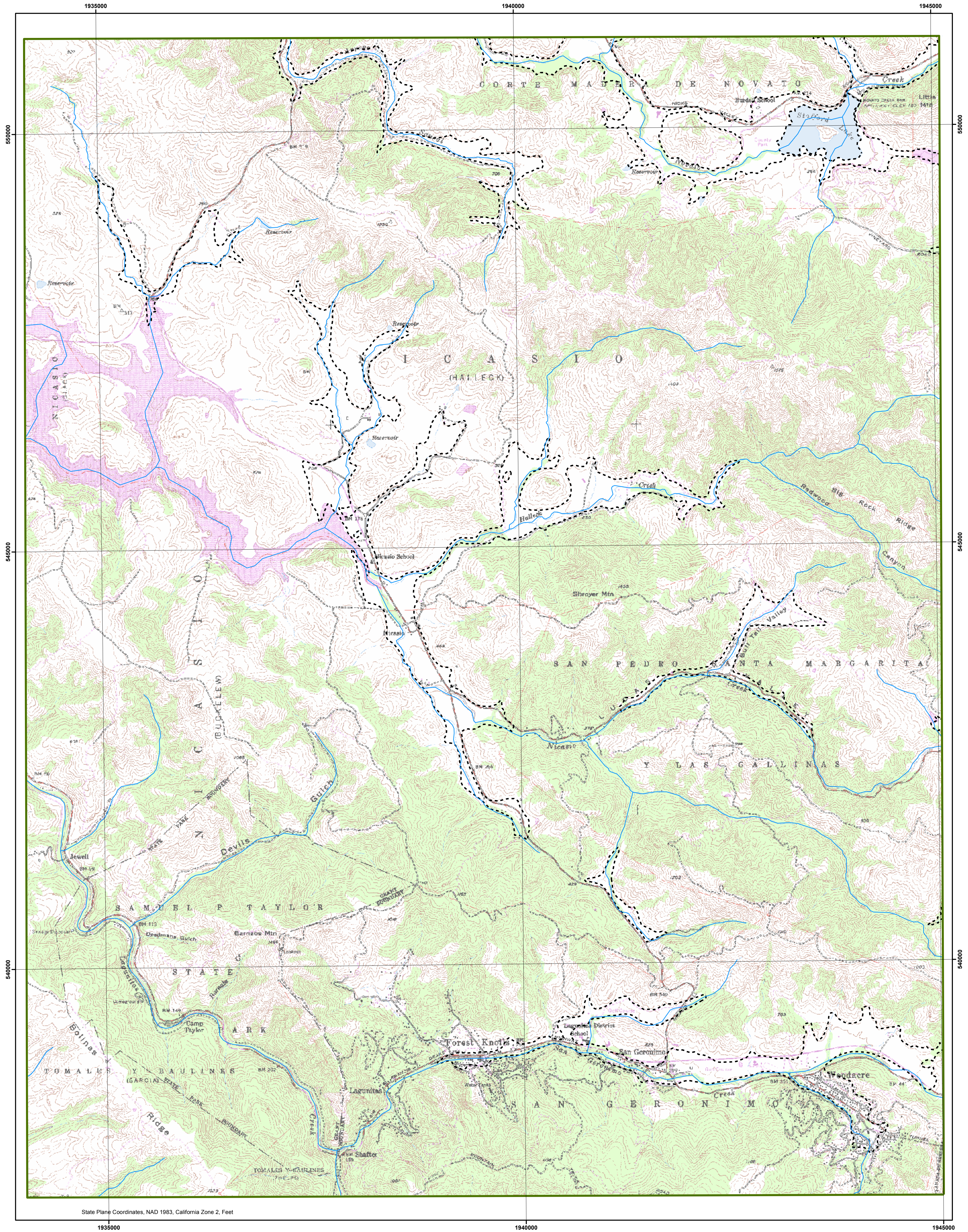


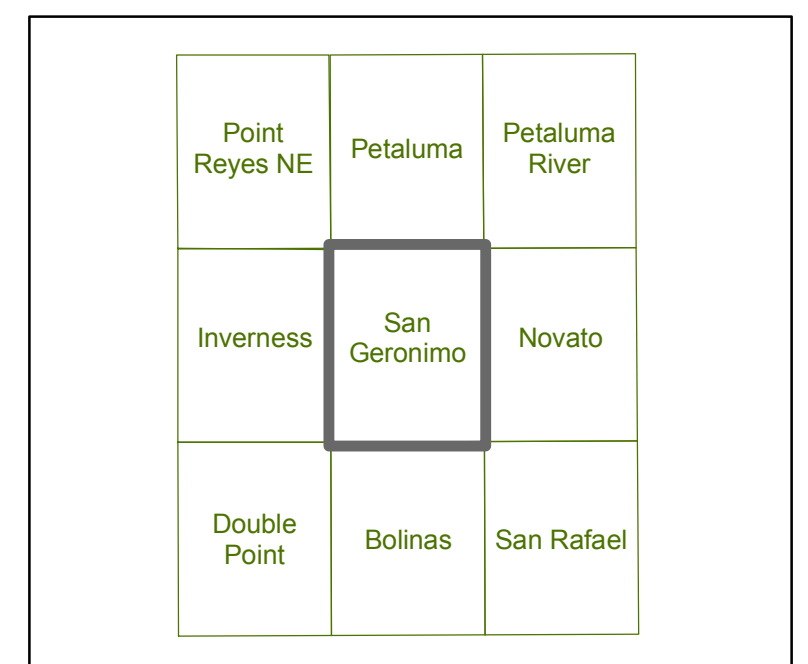
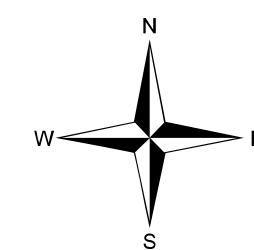
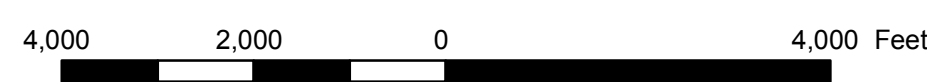
SAN GERONIMO



**DELINEATION OF SUBTERRANEAN STREAMS AND
POTENTIAL STREAM DEPLETION AREAS**

SAN GERONIMO QUADRANGLE

FEBRUARY 18, 2008



INDEX TO USGS 7.5' QUADRANGLES

- Subterranean Flow
- Potential Stream Depletion Area
- Mapped stream channel and associated alluvial deposits within a potential stream depletion area. Wells pumping from these deposits are likely to result in greater and more immediate stream depletion.

REFERENCE

Blake, M.C., Graymer, R.W., Jones, D.L., and Soule, A., 2000, Geologic map and map database of parts of Marin, San Francisco, Alameda, Contra Costa, and Sonoma counties, California: U.S. Geological Survey, Miscellaneous Field Studies Map MF-2337, scale 1:75,000.

Note: Because the delineated areas on this map were based on information readily available at the time of its development, this map does not claim to represent all of the subterranean streams or potential stream depletion areas that exist in the area. Site specific investigations will be needed to verify the existence of subterranean streams or potential stream depletion areas.